

| | | |
|--|------------------------|---|
| WAAS CH 99514 W18A | APP CRS 185° | Rwy Idg 7648 TDZE 777 Apt Elev 782 |
|--|------------------------|---|

RNAV (GPS) RWY 18

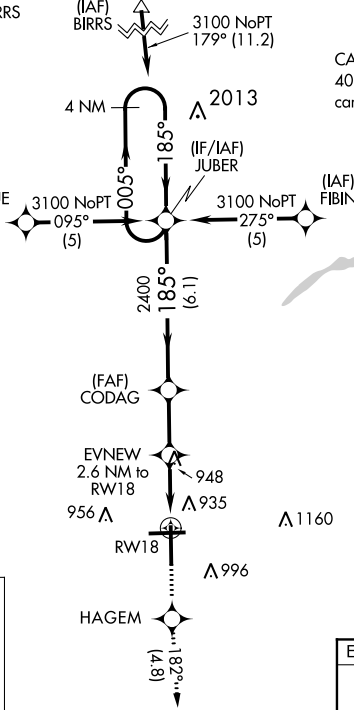
BISHOP INTL (FNT)

ASR For uncompensated Baro-VNAV systems, LNAV/VNAV NA below -16°C (4°F) or above 47°C (116°F). DME/DME RNP-0.3 NA. Rwy 18 helicopter visibility reduction below 3/4 SM NA.

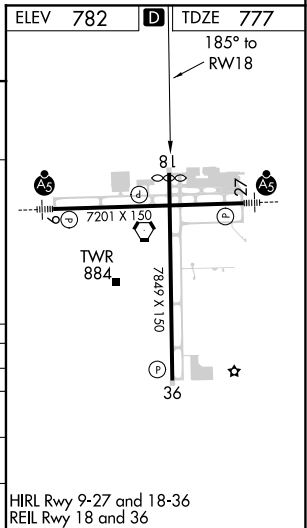
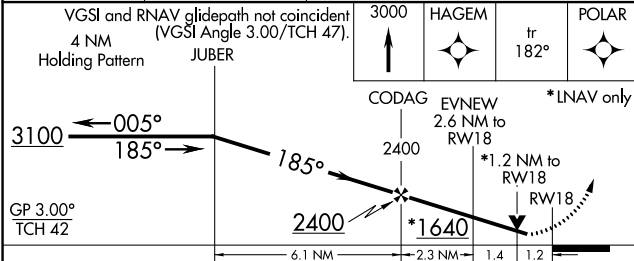
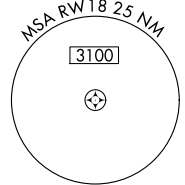
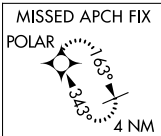
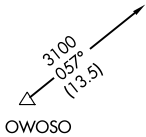
MISSED APPROACH: Climb to 3000 direct HAGEM and on track 182° to POLAR and hold.

| | | | | | |
|-----------------------|---|--|-------------------------|---------------------------|-------------------------|
| ATIS 133.15 | GREAT LAKES APP CON * 118.8 257.9 | FLINT TOWER * 126.3 (CTAF) 257.9 | GND CON 121.9 | CLNC DEL 121.75 | UNICOM 122.95 |
|-----------------------|---|--|-------------------------|---------------------------|-------------------------|

Procedure NA for arrivals at BIRRS on V320 northwest bound.



CAUTION: Brightly lighted parking lot 4000' east of approach end of Rwy 27 can easily be confused for Rwy 27.



| CATEGORY | A | B | C | D |
|---------------|--------|-------------|--------------|--------------|
| LPV DA | | 1109-1¼ | 333 (400-1¼) | |
| LNAV/ VNAV DA | | 1253-1¾ | 477 (500-1¾) | |
| LNAV MDA | 1220-1 | 443 (500-1) | 1220-1¾ | 443 (500-1¾) |
| CIRCLING | 1300-1 | 518 (600-1) | 1300-1½ | 1340-2 |
| | | | 518 (600-1½) | 558 (600-2) |

HIRL Rwy 9-27 and 18-36
REIL Rwy 18 and 36