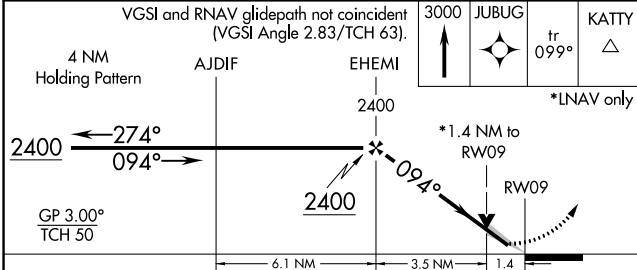
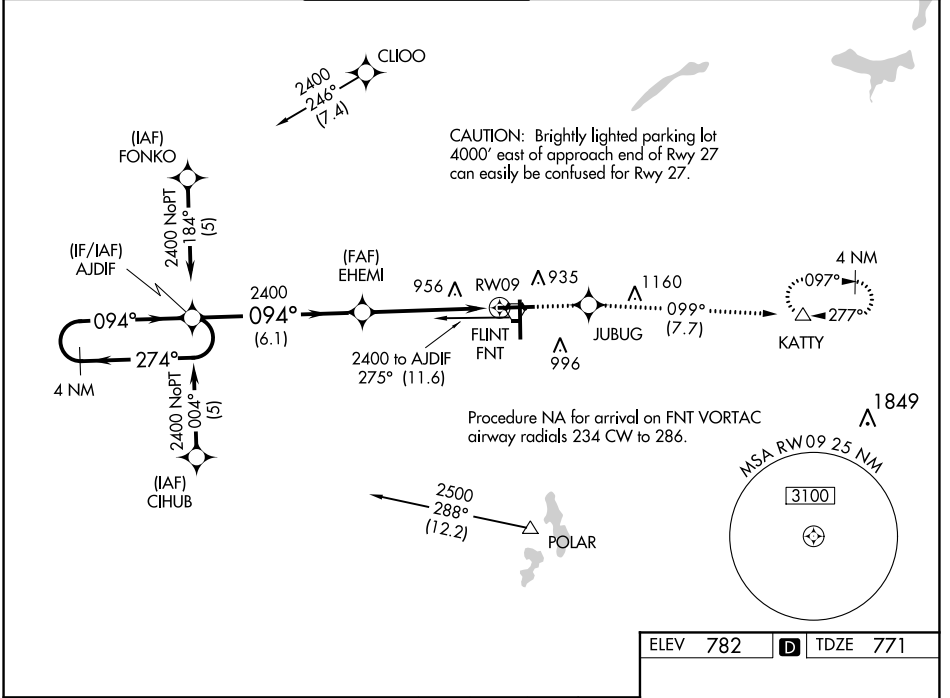


WAAS CH 45714 W09A	APP CRS 094°	Rwy Idg 7201 TDZE 771 Apt Elev 782
--------------------------	-----------------	---

RNAV (GPS) RWY 9

BISHOP INTL (F'NT)

<p>⚠ For uncompensated Baro-VNAV systems, LNAV/VNAV NA below -16°C (4°F) or above 54°C (130°F). DME/DME RNP-0.3 NA. For inop ALS, increase LNAV Cat C/D visibility to 1½ SM. **RVR 1800 authorized with use of FD or AP or HUD to DA.</p>	<p>MALSR ASR</p>		<p>MISSED APPROACH: Climb to 3000 direct JUBUG and on track 099° to KATY and hold.</p>		
	<p>ATIS 133.15</p>	<p>GREAT LAKES APP CON * 118.8 257.9</p>	<p>FLINT TOWER * 126.3 (CTAF) 257.9</p>	<p>GND CON 121.9</p>	<p>CLNC DEL 121.75</p>



ELEV 782	D TDZE 771
----------	-------------------

HIRL Rwy 9-27 and 18-36
REL Rwy 18 and 36

CATEGORY	A	B	C	D
LPV DA **	971/24		200 (200-½)	
LNAV/DA VNAV	1227/50		456 (500-1)	
LNAV MDA	1260/24 489 (500-½)		1260/50 489 (500-1)	
C CIRCLING	1260-1 478 (500-1)	1300-1 518 (600-1)	1300-1½ 518 (600-½)	1520-2¼ 738 (800-2¼)