

WAAS CH <b>42917</b> <b>W04A</b>	APP CRS <b>041°</b>	Rwy Idg TDZE Apt Elev	<b>5040</b> <b>4956</b> <b>4985</b>
--	------------------------	-----------------------------	---

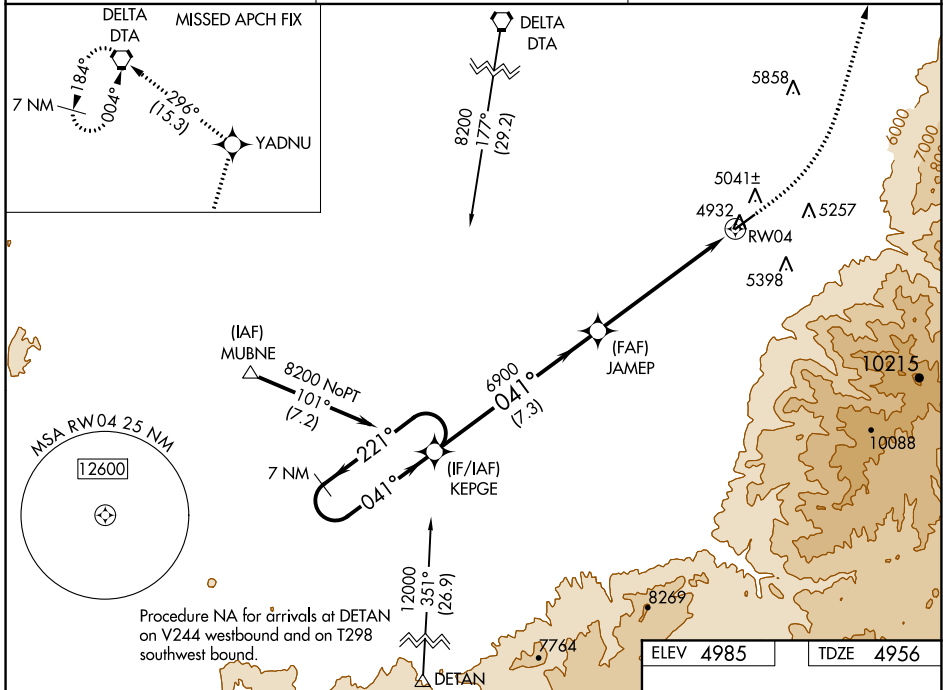
# RNAV (GPS) RWY 4

FILLMORE MUNI (FOM)

**NA** For uncompensated Baro-VNAV systems, LNAV/VNAV NA below -24°C (-11°F) or above 54°C (130°F). DME/DME RNP-0.3 NA.

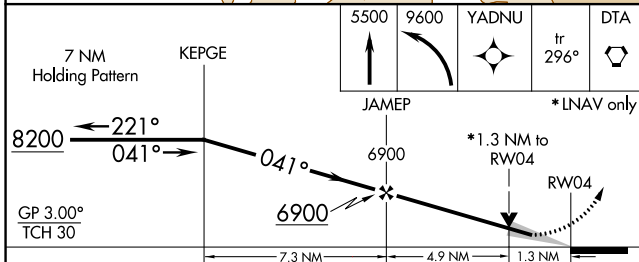
MISSED APPROACH: Climb to 5500 then climbing left turn to 9600 direct YADNU and on track 296° to DTA VORTAC and hold.

AWOS-3 <b>133.775</b>	SALT LAKE CITY CENTER <b>125.575 379.275</b>	UNICOM <b>122.8 (CTAF) 0</b>
--------------------------	---	---------------------------------



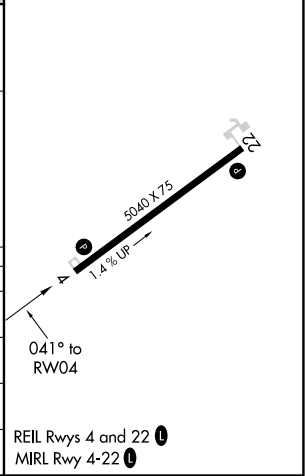
SW-4, 25 FEB 2021 to 25 MAR 2021

SW-4, 25 FEB 2021 to 25 MAR 2021



ELEV 4985	TDZE 4956
-----------	-----------

CATEGORY	A	B	C	D
LPV DA	5206-1 250 (300-1)			NA
LNAV/VNAV DA	5301-1 3/8 345 (400-1 3/8)			NA
LNAV MDA	5360-1 404 (400-1)		5360-1 1/8 404 (400-1 1/8)	NA
<b>C</b> CIRCLING	5620-1 635 (700-1)		6200-3 1215 (1300-3)	NA



REIL Rwy 4 and 22 **0**  
MIRL Rwy 4-22 **0**