

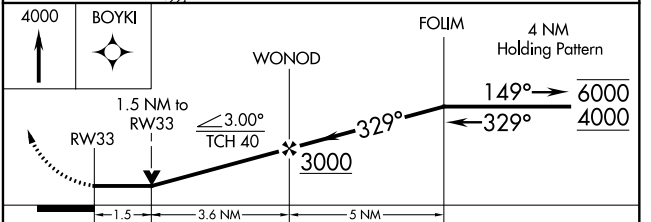
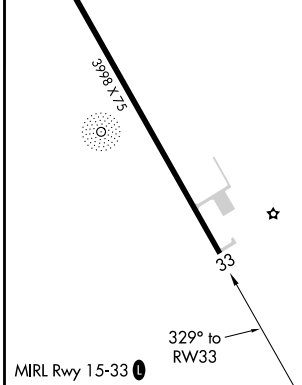
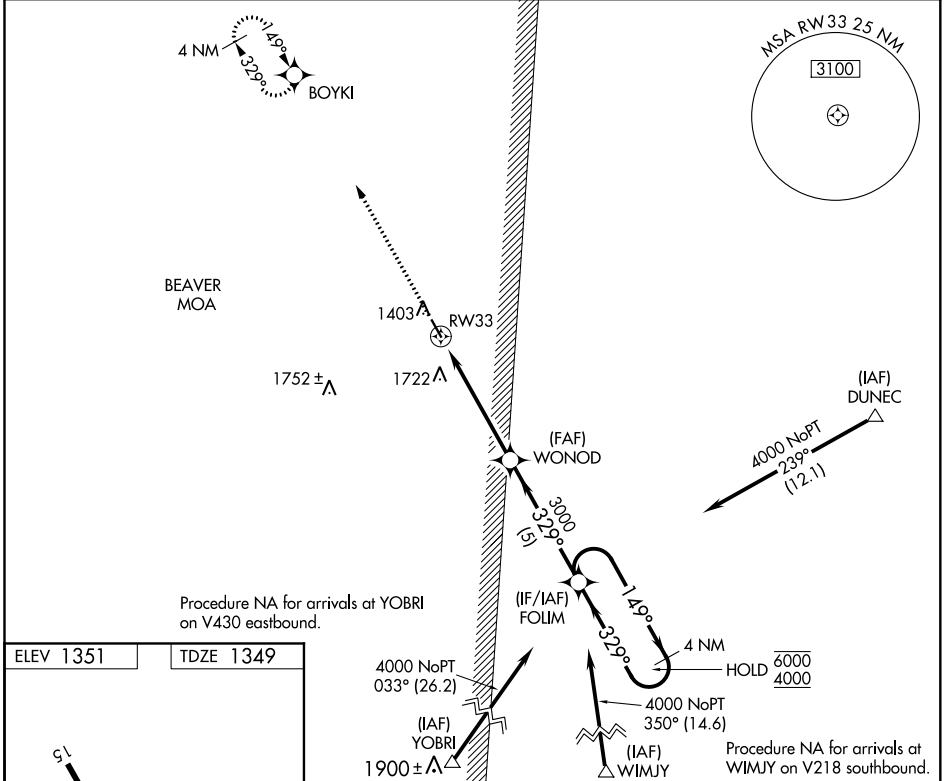
WAAS CH 40226 W33A	APP CRS 329°	Rwy Idg TDZE Apt Elev	3998 1349 1351
--	------------------------	-----------------------------	---

RNAV (GPS) RWY 33

BIGFORK MUNI (F'0Z)

RNP APCH.	MISSED APPROACH: Climb to 4000 direct BOYKI and hold, continue climb-in-hold to 4000.
Rwy 33 helicopter visibility reduction below 3/4 SM NA.	

AWOS-3 345	MINNEAPOLIS CENTER 127.9 281.45	GCO 121.725	CTAF 122.9
----------------------	---	-----------------------	----------------------



CATEGORY	A	B	C	D
LP MDA	1860-1	511 (600-1)		NA
LNAV MDA	1860-1	511 (600-1)		NA
CIRCLING	1860-1	509 (600-1)		NA

NC-1, 25 FEB 2021 to 25 MAR 2021

NC-1, 25 FEB 2021 to 25 MAR 2021