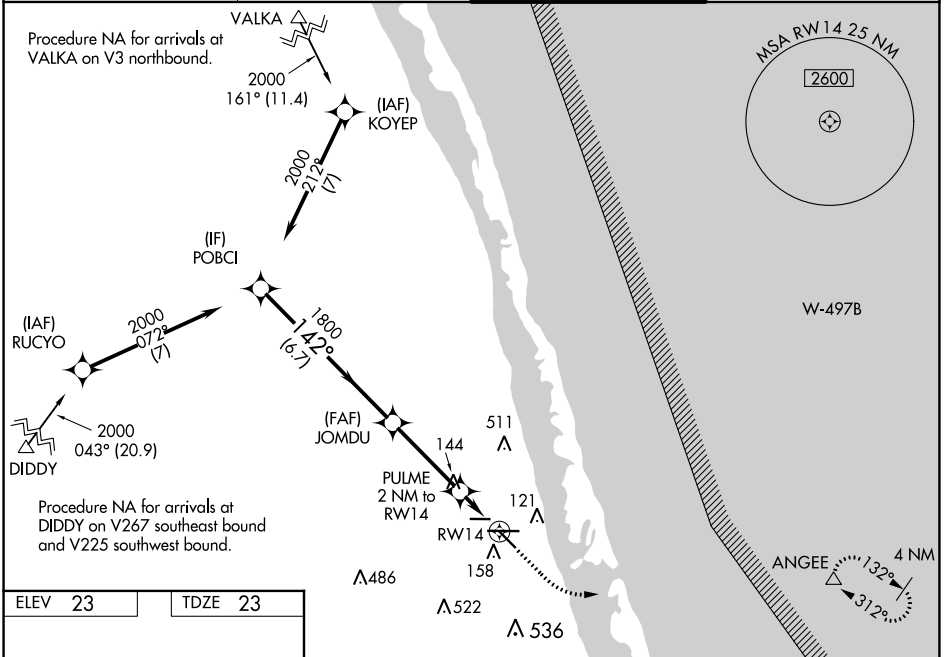


WAAS CH <b>82508</b> <b>W14A</b>	APP CRS <b>142°</b>	Rwy Idg <b>4755</b> TDZE <b>23</b> Apt Elev <b>23</b>
----------------------------------------	------------------------	-------------------------------------------------------------

# RNAV (GPS) RWY 14

TREASURE COAST INTL (FPR)

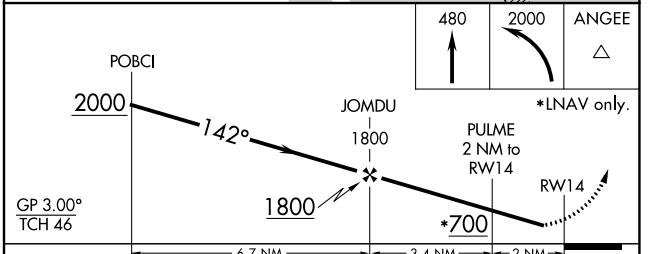
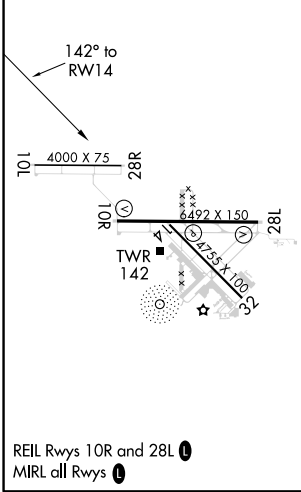
<p><b>⚠</b> Baro-VNAV NA when using Vero Beach altimeter setting. For uncompensated Baro-VNAV systems, LNAV/VNAV NA below -15°C (5°F) or above 43°C (109°F). When VGSI inop, Straight-in/Circling Rwy 14 procedure NA at night. DME/DME RNP-0.3 NA. Helicopter visibility below 1 SM NA. When local altimeter setting not received, use Vero Beach altimeter setting and increase LPV DA to 303, LNAV/VNAV DA to 378 and all MDA 40 feet; increase LNAV visibility Cats C/D ½ SM; increase Circling visibility Cat C/D ¼ SM.</p>		<p>MISSED APPROACH: Climb to 480 then climbing left turn to 2000 direct ANGEE and hold.</p>	
<p>ATIS <b>134.825</b></p>	<p>PALM BEACH APP CON <b>132.8</b></p>	<p>FORT PIERCE TOWER* <b>128.2 (CTAF) 0</b></p>	<p>GND CON <b>119.55</b></p>



SE-3, 25 FEB 2021 to 25 MAR 2021

SE-3, 25 FEB 2021 to 25 MAR 2021

ELEV 23	TDZE 23
---------	---------



CATEGORY	Distance			
	A	B	C	D
LPV DA		280-1	257 (300-1)	
LNAV/VNAV DA		355-1½	332 (400-1½)	
LNAV MDA		400-1	377 (400-1)	
CIRCLING	460-1	480-1	880-2½	880-2¾
	437 (500-1)	457 (500-1)	857 (900-2½)	857 (900-2¾)