

WAAS CH 40021	APP CRS 009°	Rwy Idg TDZE Apt Elev	5000 1059 1077
-------------------------	------------------------	-----------------------------	---

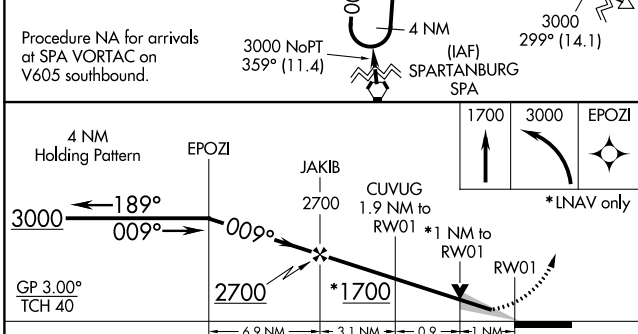
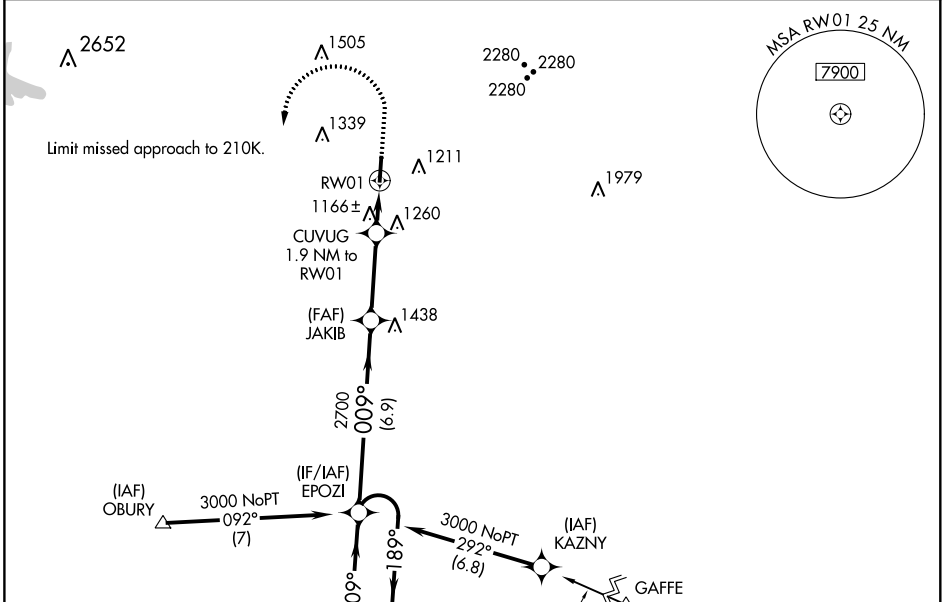
RNAV (GPS) RWY 1

RUTHERFORD COUNTY-MARCHMAN FIELD (FQD)

⚠ Baro-VNAV NA when using Shelby-Cleveland County Rgnl altimeter setting. For uncompensated Baro-VNAV systems, LNAV/VNAV NA below -17°C (2°F) or above 54°C (130°F). DME/DME RNP-0.3 NA. When local altimeter setting not received, use Shelby-Cleveland County Rgnl altimeter setting and increase all DA 77 feet, all MDA 80 feet, and increase LPV all Cats, LNAV/VNAV all Cats, LNAV Cats C/D and Circling Cats C/D visibility ¼ mile. VDP NA with Shelby-Cleveland County Rgnl altimeter setting.

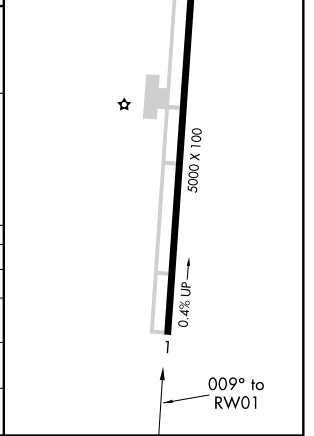
MISSED APPROACH: Climb to 1700 then climbing left turn to 3000 direct EPOZI and hold.

AWOS-3 118.275	GREER APP CON ★ 119.4 350.2	UNICOM 122.8 (CTAF) 0
--------------------------	---------------------------------------	---------------------------------



ELEV 1077	TDZE 1059
REIL Rwy 1 0	MIRL Rwy 1-19 0

CATEGORY	A	B	C	D
LPV DA		1309-7/8	250 (300-7/8)	
LNAV/VNAV DA		1459-13/8	400 (400-13/8)	
LNAV MDA		1420-1	361 (400-1)	
C CIRCLING	1560-1 483 (500-1)	1620-1 543 (600-1)	1640-1½ 563 (600-1½)	1820-2½ 743 (800-2½)



SE-2, 25 FEB 2021 to 25 MAR 2021

SE-2, 25 FEB 2021 to 25 MAR 2021