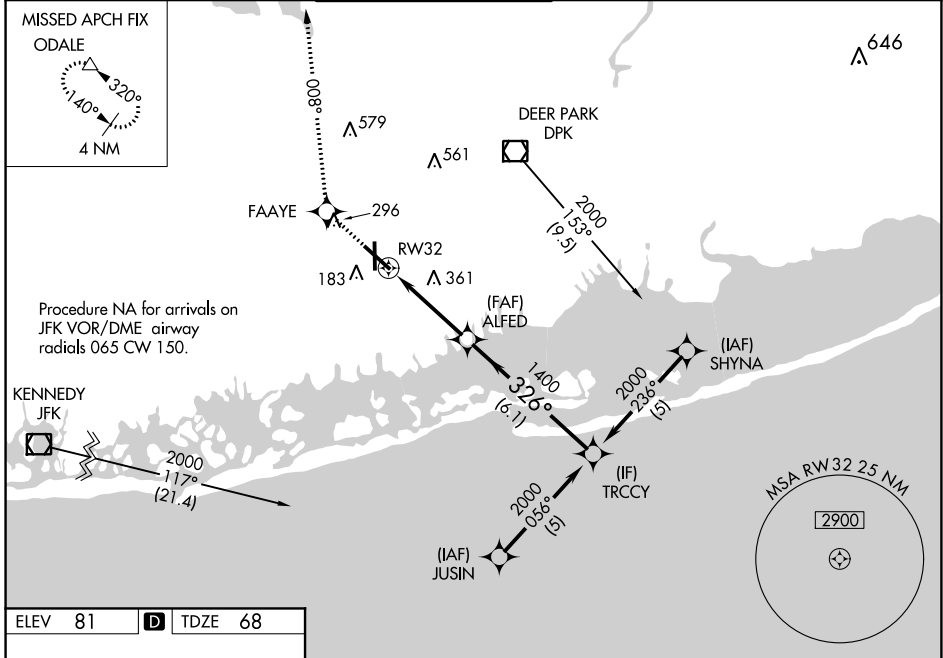


WAAS CH <b>70715</b> <b>W32A</b>	APP CRS <b>326°</b>	Rwy Idg TDZE Apt Elev	<b>6833</b> <b>68</b> <b>81</b>
--	------------------------	-----------------------------	---------------------------------------

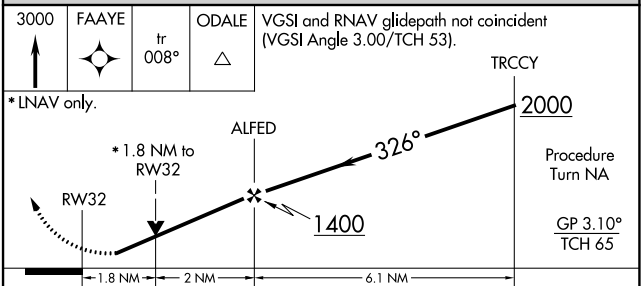
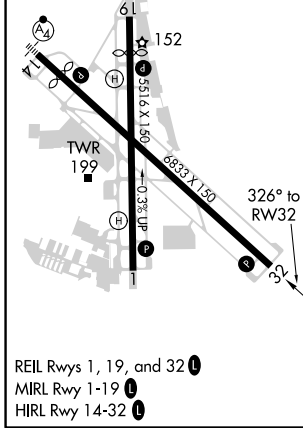
# RNAV (GPS) RWY 32

REPUBLIC (F/RG)

RNP APCH.		REPUBLIC TOWER ★		GND CON	CLNC DEL	UNICOM
<p>Baro-VNAV NA when using Islip altimeter setting. For uncompensated Baro-VNAV systems, LNAV/VNAV NA below -15°C or above 38°C. Rwy 32 helicopter visibility reduction below 1 SM NA. When local altimeter setting not received, use Islip altimeter setting and increase all DA 37 feet and all MDA 40 feet; increase LNAV/VNAV all Cats and Circling Cat C and D visibility ¼ mile. VDP NA when using Islip altimeter setting.</p>		<p>118.8 (CTAF) <b>0 279.65</b></p>		121.6 269.6	128.25	122.95
ATIS	NEW YORK APP CON					
126.65	128.125 269.0					



ELEV 81	<b>D</b>	TDZE 68
---------	----------	---------



CATEGORY	A	B	C	D
LPV DA		369-1	301 (300-1)	
LNAV/VNAV DA		761-2¼	693 (700-2¼)	
LNAV MDA	680-1	612 (600-1)	680-1¾ 612 (600-1¾)	680-2 612 (600-2)
CIRCLING	680-1	599 (600-1)	720-1¾ 639 (700-1¾)	720-2 639 (700-2)

NE-2, 25 FEB 2021 to 25 MAR 2021

NE-2, 25 FEB 2021 to 25 MAR 2021