


WAAS CH 69612 W14A	APP CRS 146°	Rwy Idg TDZE Apt Elev	6157 77 80
--	------------------------	-----------------------------	---------------------------------------

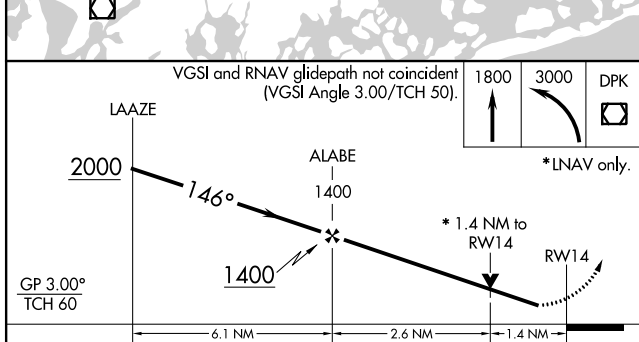
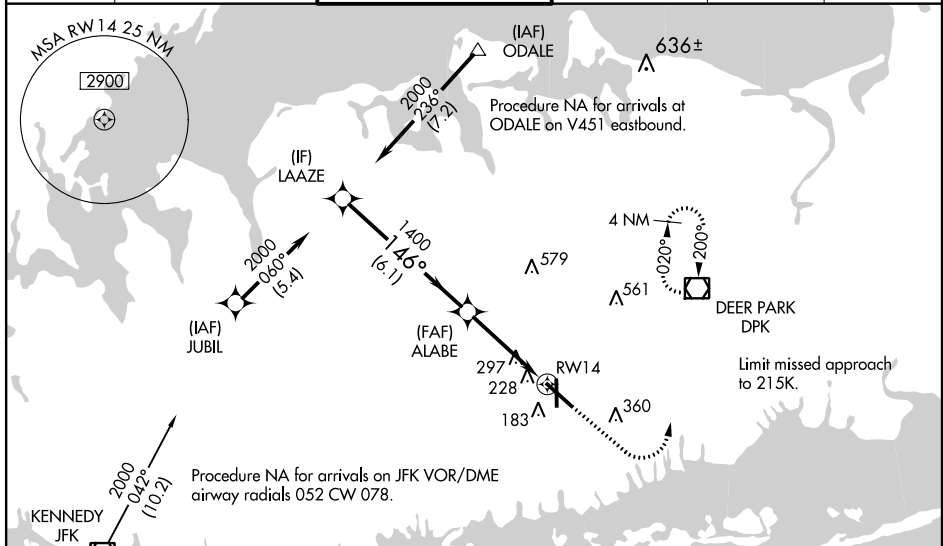
RNAV (GPS) Y RWY 14

REPUBLIC (F/RG)

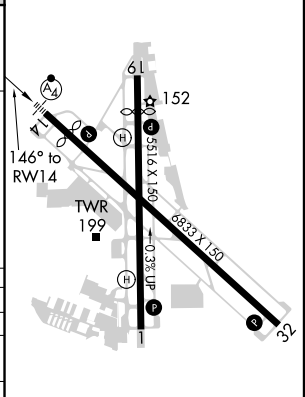
▼ Inop table does not apply to LPV. For uncompensated Baro-VNAV systems, LNAV/VNAV NA below -15°C (5°F) or above 54°C (130°F). DME/DME RNP-0.3 NA. For inop MALSR: increase LNAV/VNAV all Cats visibility to 1; LNAV Cats A/B visibility to 1; LNAV Cats C/D visibility to 1½. Baro-VNAV and VDP NA when using Islip altimeter setting. When local altimeter setting not received, use Islip altimeter setting: increase LPV all Cats DA to 314; increase LNAV/VNAV all Cats DA to 426; increase all MDA 40 feet and Circling Cats C/D visibility ¼ mile; inop table does not apply to LPV; for inop MALSR increase LNAV/VNAV all Cats visibility to 1½ and LNAV Cats A/B visibility to 1.

MALSR

MISSED APPROACH:
 Climb to 1800 then climbing left turn to 3000 direct DPK VOR/DME and hold, continue climb-in-hold to 3000.

ATIS 126.65	NEW YORK APP CON 128.125 269.0	REPUBLIC TOWER ★ 118.8 (CTAF) 0 279.65	GND CON 121.6 269.6	CLNC DEL 128.25	UNICOM 122.95
-----------------------	--	--	-------------------------------	---------------------------	-------------------------



ELEV 80	D TDZE 77
---------	------------------



CATEGORY	A	B	C	D
LPV DA		277-¾	200 (200-¾)	
LNAV/VNAV DA		389-¾	312 (400-¾)	
LNAV MDA	560-¾ 483 (500-¾)		560-1 483 (500-1)	
CIRCLING	560-1 480 (500-1)	600-1 520 (600-1)	720-1¾ 640 (700-1¾)	720-2 640 (700-2)

REIL Rwy 1, 19, and 32 **Ⓛ**
 MIRL Rwy 1-19 **Ⓛ**
 HIRL Rwy 14-32 **Ⓛ**

NE-2, 25 FEB 2021 to 25 MAR 2021

NE-2, 25 FEB 2021 to 25 MAR 2021