

RNAV (GPS) RWY 4

APCH CRS	Rwy ldg	4503
044°	TDZE	1066
	Arprt Elev	1066

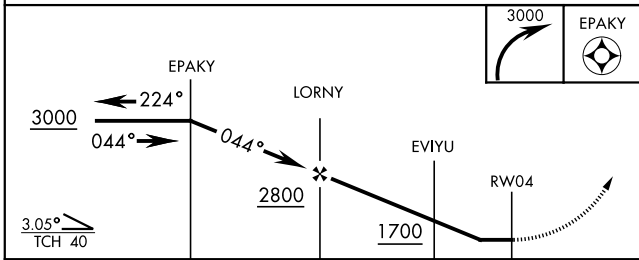
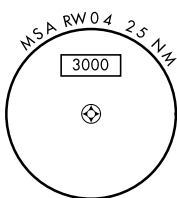
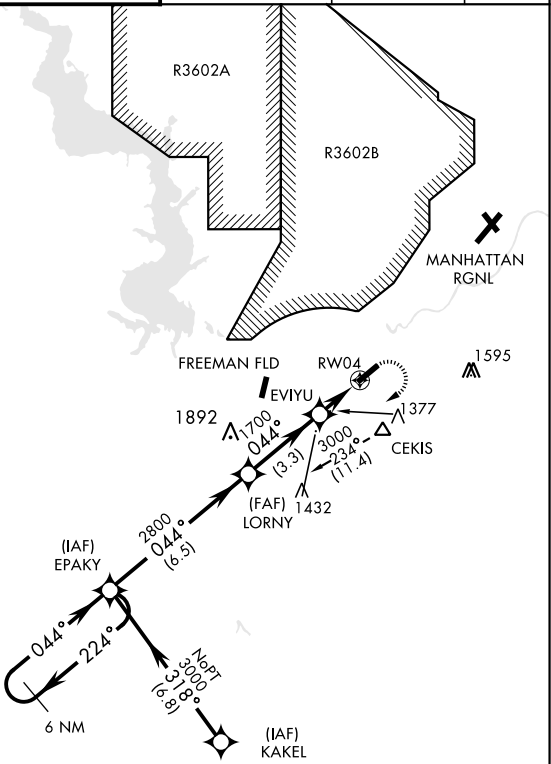
AL-155 [USA]

MARSHALL AAF (KFRI)

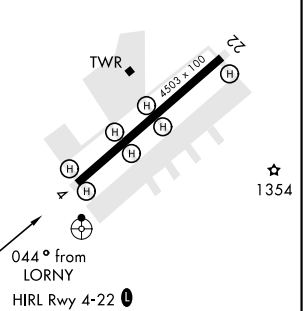
<p>▼ * Circling not authorized NW of Rwy 4-22.</p> <p>▲ NA Visibility reduction by helicopters NA</p>	<p>ODALS</p>	<p>MISSED APPROACH: Climbing right turn to 3000 direct EPAKY and hold.</p>
---	--------------	--

<p>ATIS ★</p> <p>121.025</p>	<p>MARSHALL GCA</p> <p>121.25 254.35</p>	<p>MARSHALL TOWER ★</p> <p>126.2 (CTAF) 0 248.65</p>	<p>GND CON</p> <p>140.20 229.4</p>	<p>CLNC DEL</p> <p>119.65</p>	<p>ASR/PAR</p>
-------------------------------------	---	---	---	--------------------------------------	----------------

DME/DME RNP -0.3 NA
 Procedure NA for arrival at CEKIS via V4-508 eastbound.



ELEV 1066	TDZE 1066
-----------	-----------



CATEGORY	A	B	C	D
LNAY MDA	1640-1 574 (600-1)	1680-1 614 (700-1)	1640-1½ 574 (600-1½)	1640-1¾ 574 (600-1¾)
CIRCLING *	1660-1 594 (600-1)	1680-1 614 (700-1)	1680-1¾ 614 (700-1¾)	1760-2¼ 694 (700-2¼)

RNAV (GPS) RWY 4

NC-2, 25 FEB 2021 to 25 MAR 2021

NC-2, 25 FEB 2021 to 25 MAR 2021