

WAAS CH 45812 W13A	APP CRS 130°	Rwy Idg TDZE 1162 Apt Elev 1162
--	------------------------	---

RNAV (GPS) RWY 13

FAIRMONT MUNI (FRM)

RNP APCH.

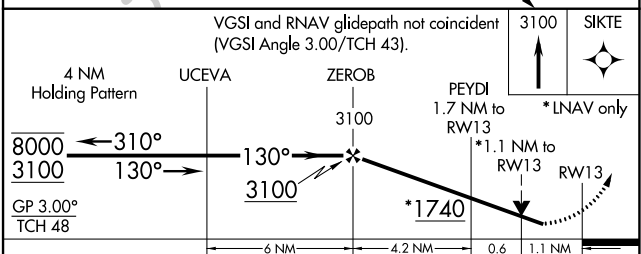
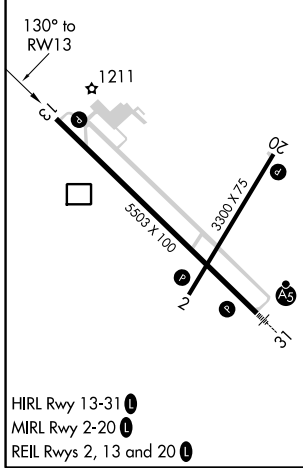
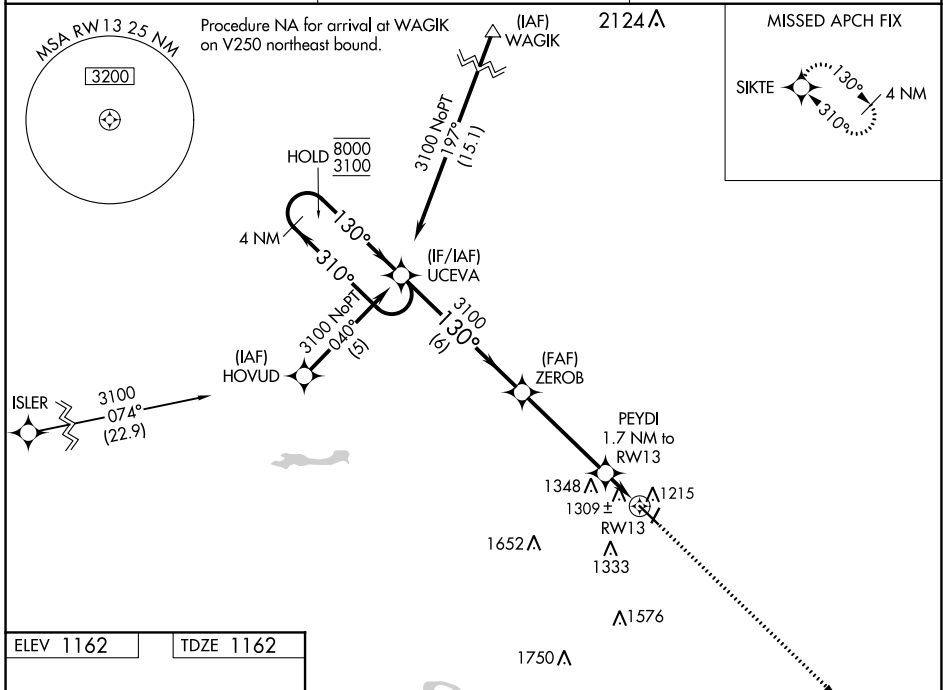
⚠ For uncompensated Baro-VNAV systems, procedure NA below -17°C or above 54°C. Rwy 13 helicopter visibility reduction below ¾ SM NA.

MISSED APPROACH: Climb to 3100 direct SIKTE and hold.

AWOS-3PT
120.025

MINNEAPOLIS CENTER
127.75 257.7

UNICOM
122.8 (CTAF) 0



CATEGORY	A	B	C	D
LPV DA	1460-1 298 (300-1)			
LNAV/VNAV DA	1695-2 533 (600-2)			
LNAV MDA	1560-1 398 (400-1)			1560-1¼ 398 (400-1¼)
C CIRCLING	1640-1 478 (500-1)	1660-1 498 (500-1)	1980-2¼ 818 (900-2¼)	1980-2½ 818 (900-2½)

NC-1, 25 FEB 2021 to 25 MAR 2021

NC-1, 25 FEB 2021 to 25 MAR 2021