

APP CRS **272°**
 Rwy Idg **3148**
 TDZE **1424**
 Apt Elev **1430**

RNAV (GPS) RWY 27

JOE FOSS FIELD (FSD)

RNP APCH.

ASR Rwy 27 helicopter visibility reduction below 3/4 SM NA.
 -31°C

MISSED APPROACH: Climb to 2500, then climbing right turn to 4000 direct MOPIUE WP and hold.

ATIS
126.6

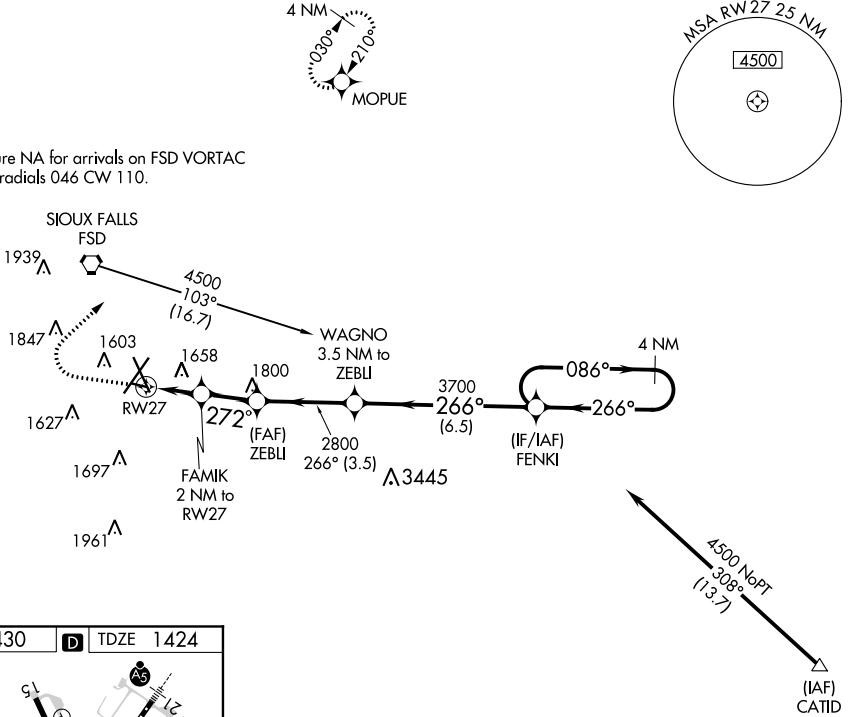
SIOUX FALLS APP CON*
125.8 284.725

SIOUX FALLS TOWER*
118.3 (CTAF) 257.8

GND CON
121.9 348.6

UNICOM
122.95

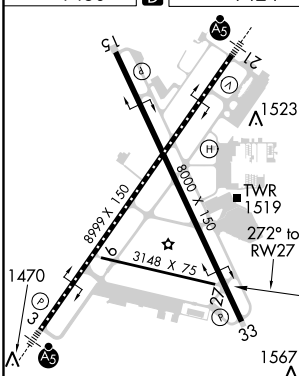
Procedure NA for arrivals on FSD VORTAC
 airway radials 046 CW 110.



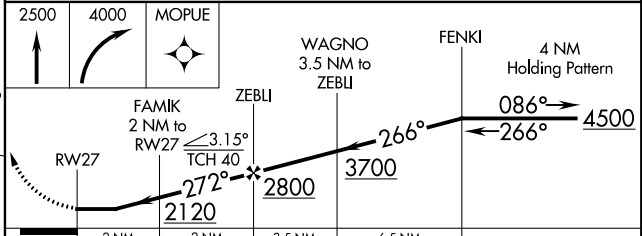
NC-1, 25 FEB 2021 to 25 MAR 2021

NC-1, 25 FEB 2021 to 25 MAR 2021

ELEV 1430 **D** TDZE 1424



TDZ/CL Rwy 21
 MIRL Rwy 9-27
 REIL Rws 15 and 33
 HIRL Rws 3-21 and 15-33



CATEGORY	A	B	C	D
LNVA MDA	1960-1	536 (600-1)		NA
CIRCLING	1960-1 530 (600-1)	1980-1 550 (600-1)		NA