

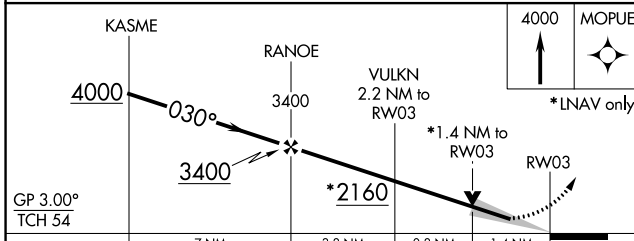
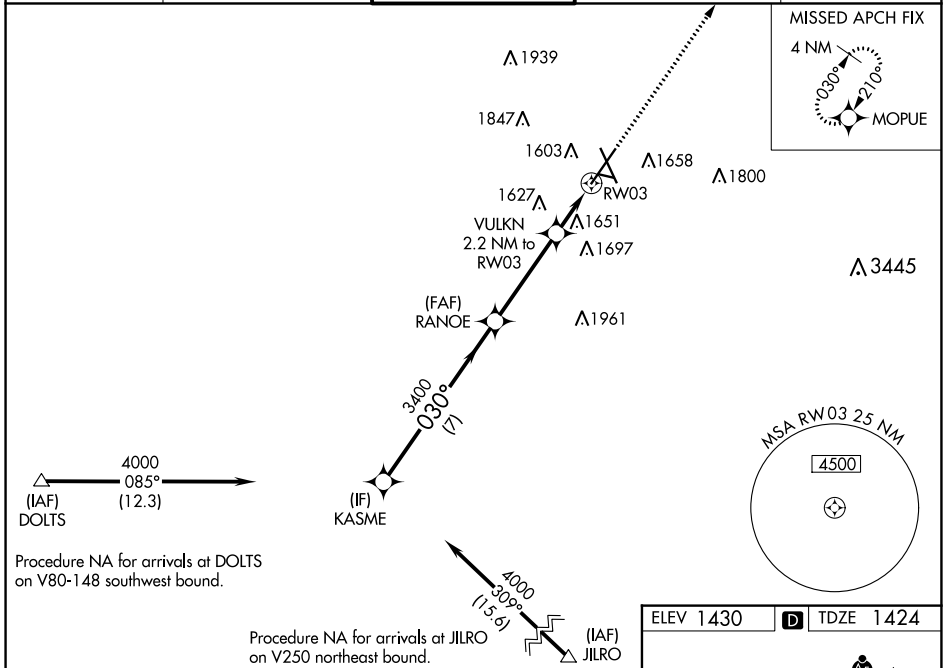
WAAS CH 97722	APP CRS 030°	Rwy Idg TDZE Apt Elev	8999 1424 1430
-------------------------	------------------------	-----------------------------	---

RNAV (GPS) RWY 3

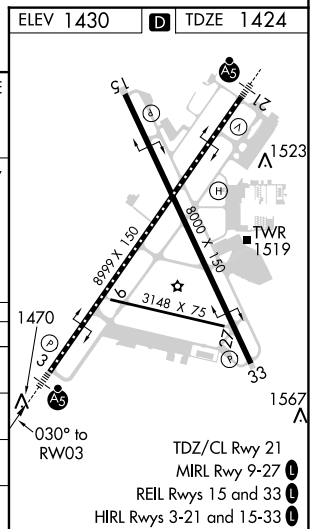
JOE FOSS FIELD (FSD)

RNP APCH.	MALSR	MISSED APPROACH: Climb to 4000 direct MOPUE and hold.
<p>▼ For uncompensated Baro-VNAV systems, LNAV/VNAV NA below -17°C (2°F) or above 54°C (130°F). For inop ALS, increase LNAV/VNAV all Cats visibility to RVR 4500 and LNAV Cats C/D visibility to 1 3/8 SM.</p> <p>▲ ASR -31°C</p>		

ATIS 126.6	SIoux FALLS APP CON* 125.8 284.725	SIoux FALLS TOWER* 118.3 (CTAF) 257.8	GND CON 121.9 348.6	UNICOM 122.95
----------------------	--	---	-------------------------------	-------------------------



CATEGORY	A	B	C	D
LPV DA		1674/24	250 (300-1/2)	
LNAV/VNAV DA		1726/24	302 (300-1/2)	
LNAV MDA	1920/24	496 (500-1/2)	1920/50	496 (500-1)
CIRCLING	1960-1 530 (600-1)	1980-1 550 (600-1)	2060-1 3/4 630 (700-1 3/4)	2200-2 1/2 770 (800-2 1/2)



NC-1, 25 FEB 2021 to 25 MAR 2021

NC-1, 25 FEB 2021 to 25 MAR 2021