

APP CRS 098°	Rwy Idg TDZE Apt Elev	3148 1424 1430
------------------------	-----------------------------	---

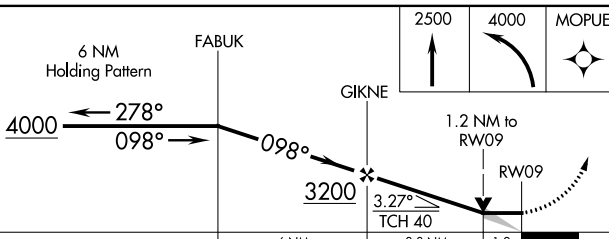
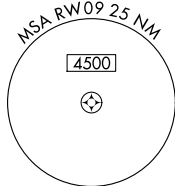
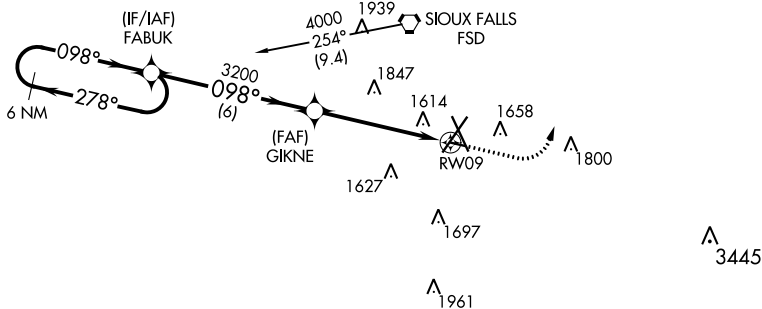
RNAV (GPS) RWY 9

JOE FOSS FIELD (FSD)

RNP APCH.		MISSED APPROACH: Climb to 2500 then climbing left turn to 4000 direct MOPUE WP and hold.		
ASR Rwy 9 helicopter visibility reduction below 3/4 SM NA.				
ATIS 126.6	SIoux FALLS APP CON* 125.8 284.725	SIoux FALLS TOWER* 118.3 (CTAF) 257.8	GND CON 121.9 348.6	UNICOM 122.95



Procedure NA for arrivals on FSD VORTAC airway radials 202 CW 297.



ELEV 1430	TDZE 1424
-----------	-----------

1523
1519
1567

TDZ/CL Rwy 21
MIRL Rwy 9-27
REIL Rws 15 and 33
HIRL Rws 3-21 and 15-33

CATEGORY	A	B	C	D
LNAV MDA	1880-1	456 (500-1)		NA
CIRCLING	1960-1 530 (600-1)	1980-1 550 (600-1)		NA

NC-1, 25 FEB 2021 to 25 MAR 2021

NC-1, 25 FEB 2021 to 25 MAR 2021