

FORT SILL, OKLAHOMA

RNAV (GPS) RWY 18

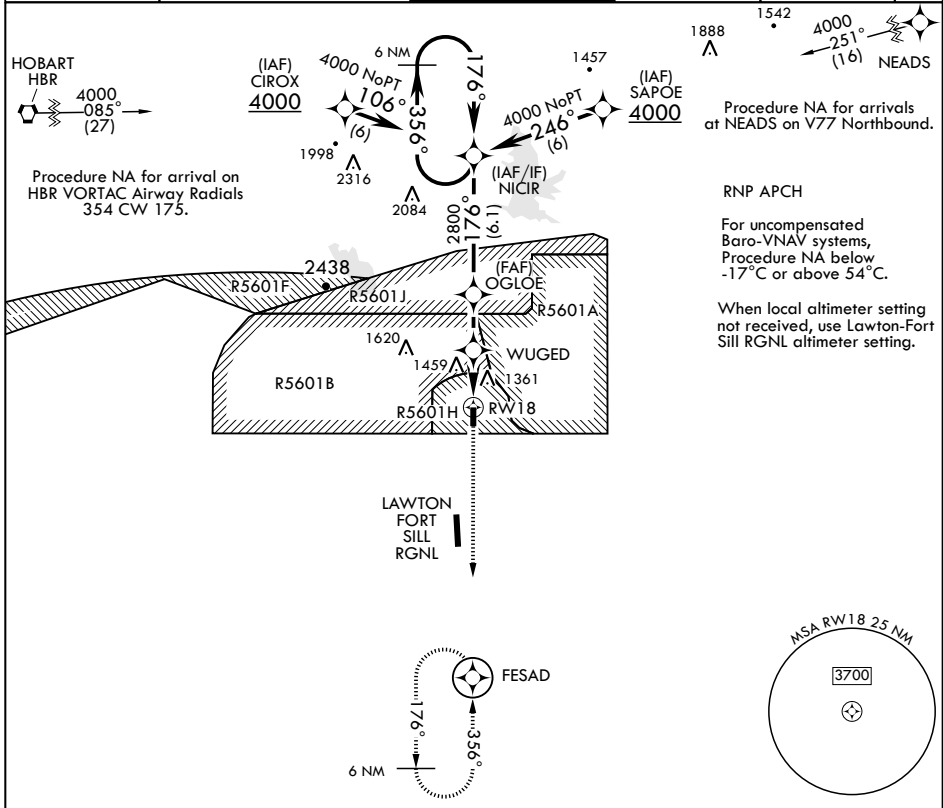
APCH CRS 176°
 Rwy Idg 5001
 TDZE 1188
 Arpt Elev 1188

AL-230 (USA)

HENRY POST AAF (KFSI)

MISSED APPROACH: Climb to 3500 direct to FESAD and hold.

ATIS 135.425 354.025	FORT SILL APP CON/DEP CON 120.55 322.4	TOWER* 124.95 (CTAF) 229.4	POST GND CON 121.7 279.575	CLNC DEL 121.7 279.575	ASR
--------------------------------	--	--------------------------------------	--------------------------------------	----------------------------------	-----



SC-1, 25 FEB 2021 to 25 MAR 2021

SC-1, 25 FEB 2021 to 25 MAR 2021

GP 3.00° TCH 44	NICIR 6000 4000	356° 176°	OGLOE 2800	WUGED *2020	*1.2 NM to RW18	3500 FESAD	ELEV 1188	TDZE 1188
CATEGORY	A	B	C	D				
LNAV/VNAV DA	1673-1½		485	(500-1½)				
LNAV MDA	1600-1	412 (500-1)	1600-1½	412 (500-1½)				
CIRCLING	1680-1 492 (500-1)	1760-1 572 (600-1)	1820-1¾ 632 (700-1¾)	1920-2¼ 732 (800-2¼)				

81
176° to RW18

BCN 1262
TWR 1247

5001 x 150
0.4% DOWN

36 (A2)

HIRL all Rwys

FORT SILL, OKLAHOMA

34°39'N - 98°24'W

HENRY POST AAF (KFSI)

Amdt 1 20JUN19

RNAV (GPS) RWY 18