

FORT KNOX, KENTUCKY

ILS or LOC/DME RWY 18

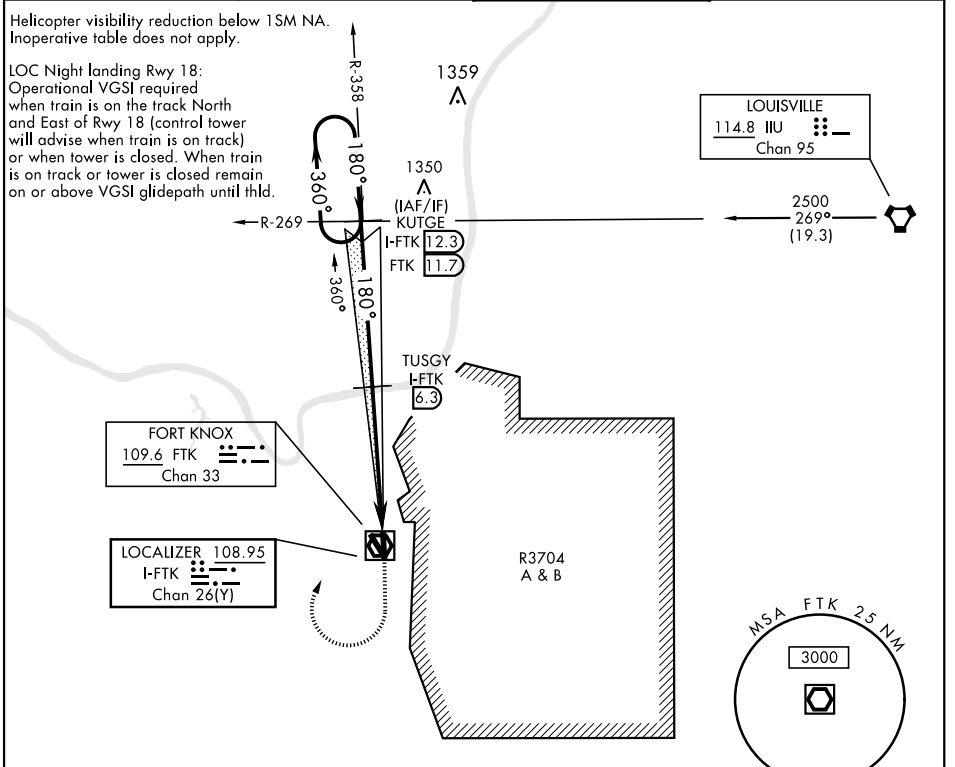
LOC/DME I-FTK 108.95 Chan 26 (Y)	APCH CRS 180°	Rwy Idg 5184 THRE 754 Arpt Elev 754	AL-151 [USA]	GODMAN AAF (KF ^T K)
--	-------------------------	--	--------------	--------------------------------

▼ *S-ILS 18 mins NA when train is on track North and East of Rwy 18, control twr will advise when train is on track. S-ILS 18 mins NA when control twr closed.
 ** Circling NA E of Rwy 18-36.



MISSED APPROACH: Climb to 1300, then climbing right turn to 2500 on heading 030° to intercept FTK VOR/DME R-358 to KUTGE INT/I-FTK 12.3 DME and hold.

ATIS* 109.6	LOUISVILLE APP CON 132.075 327.0	GODMAN TOWER* 133.35 (CTAF) 0	GND CON 121.9 239.3
------------------------------	---	--	--------------------------------------



ELEV 754	THRE 754				
		1300 2500 KUTGE I-FTK 12.3 FTK R-358	TUSGY I-FTK 6.3	KUTGE I-FTK 12.3 FTK R-358 FTK 11.7	2500 180° 360° 180° GS 3.00° TCH 56
I-FTK DME VGSI and ILS glidepath not coincident I-FTK 1					
CATEGORY S-ILS 18* S-LOC 18 CIRCLING**		A	B	C	D
			1005-1	250 (300-1)	
			1120-1	365 (400-1)	
		1300-1 545 (600-1)		1300-1½ 545 (600-1½)	1320-2 565 (600-2)

FORT KNOX, KENTUCKY 37°54'N-85°58'W GODMAN AAF (KF^TK)

Orig C 08OCT20

ILS or LOC/DME RWY 18

SE-1, 25 FEB 2021 to 25 MAR 2021

SE-1, 25 FEB 2021 to 25 MAR 2021