

FORT KNOX, KENTUCKY

# RNAV (GPS) RWY 18

APCH CRS	Rwy Idg	5184
180°	TDZE	754
	Arpt Elev	754

AL-151 [USA]

GODMAN AAF (KF TK)

SSALR MISSED APPROACH: Climbing right to 2600, direct to NADDI and hold.

\* Circling not authorized E of Rwy 18-36.

ATIS★ <b>109.6</b>	LOUISVILLE APP CON <b>132.075 327.0</b>	GODMAN TOWER★ <b>133.35 (CTAF) 0</b>	GND CON <b>121.9 239.3</b>
-----------------------	--	---	-------------------------------

Vis reduction by helicopters NA.

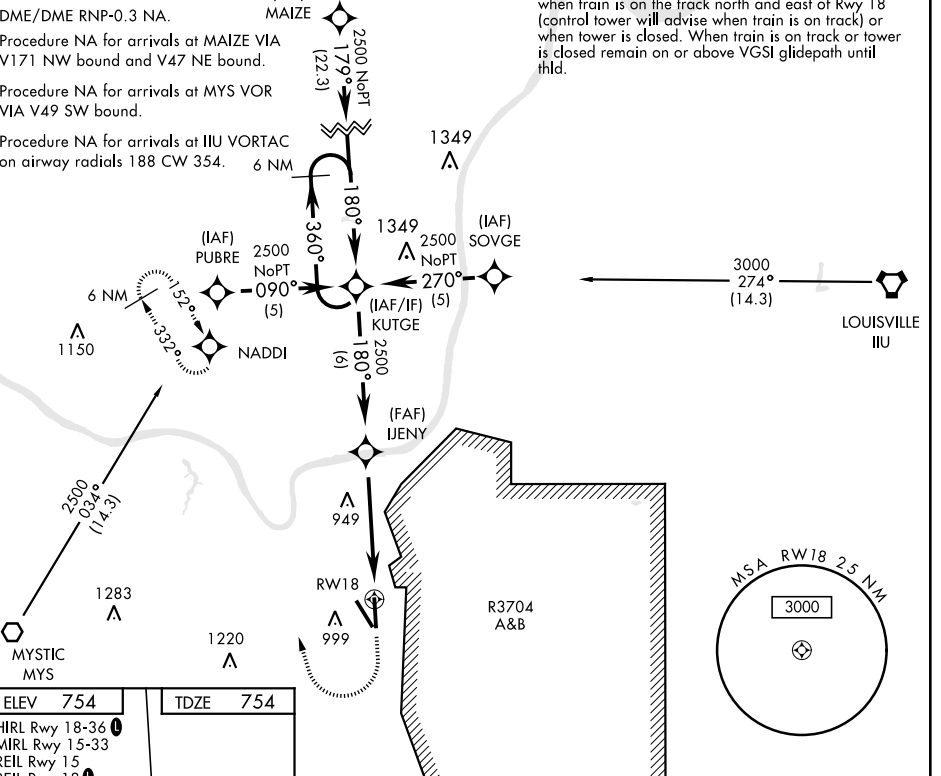
DME/DME RNP-0.3 NA.

Procedure NA for arrivals at MAIZE VIA V171 NW bound and V47 NE bound.

Procedure NA for arrivals at MYS VOR VIA V49 SW bound.

Procedure NA for arrivals at IIU VORTAC on airway radials 188 CW 354.

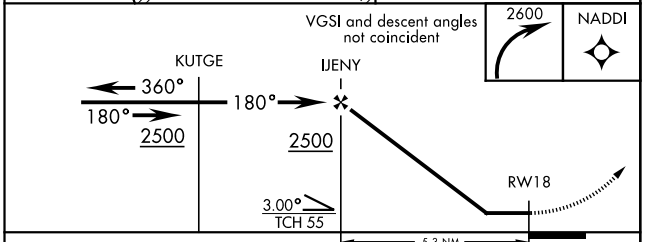
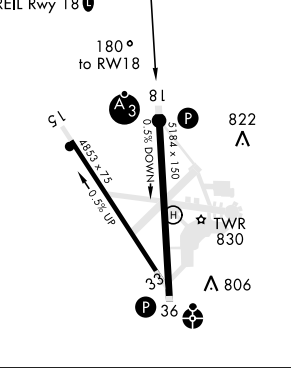
Night landing Rwy 18: Operational VGSI required when train is on the track north and east of Rwy 18 (control tower will advise when train is on track or when tower is closed. When train is on track or tower is closed remain on or above VGSI glidepath until thld.



SE-1, 25 FEB 2021 to 25 MAR 2021

SE-1, 25 FEB 2021 to 25 MAR 2021

ELEV	754	TDZE	754
HIRL Rwy 18-36			
MIRL Rwy 15-33			
REIL Rwy 15			
REIL Rwy 18			



CATEGORY	A	B	C	D
LNAV MDA	1200-1	445 (500-1)	1200-1¼ 445 (500-1¼)	1200-1½ 445 (500-1½)
CIRCLING *	1300-1	545 (600-1)	1300-1½ 545 (600-1½)	1320-2 565 (600-2)

FORT KNOX, KENTUCKY

37°54'N-85°58'W

GODMAN AAF (KF TK)

Orig B 08OCT20

# RNAV (GPS) RWY 18