

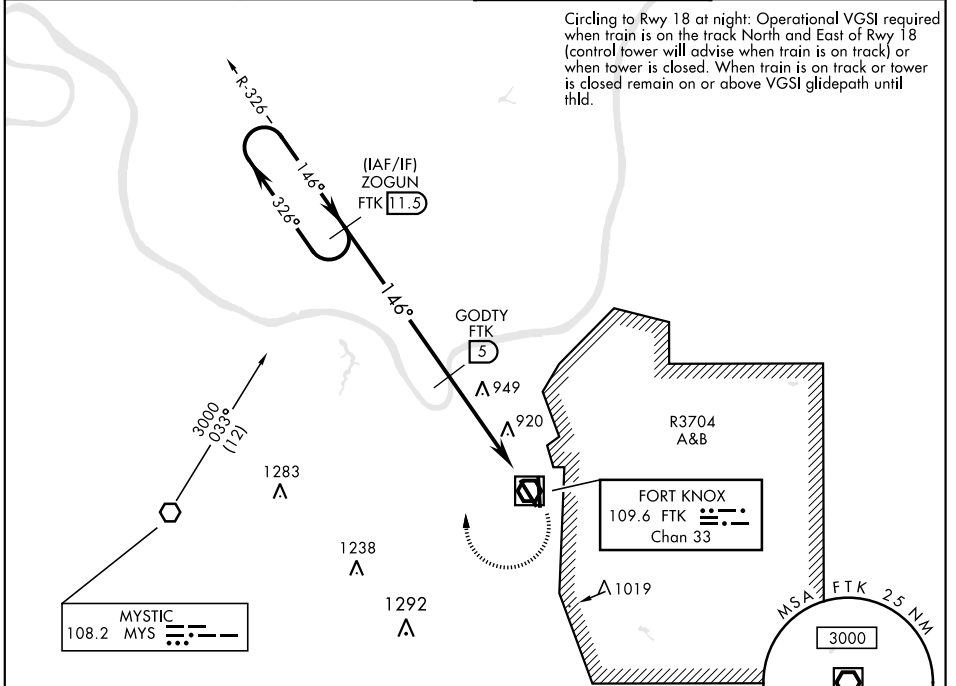
VOR/DME RWY 15

VOR/DME FTK 109.6 Chan 33	APCH CRS 146°	Rwy ldg TDZE Arprt Elev 4853 754 754
---	-------------------------	--

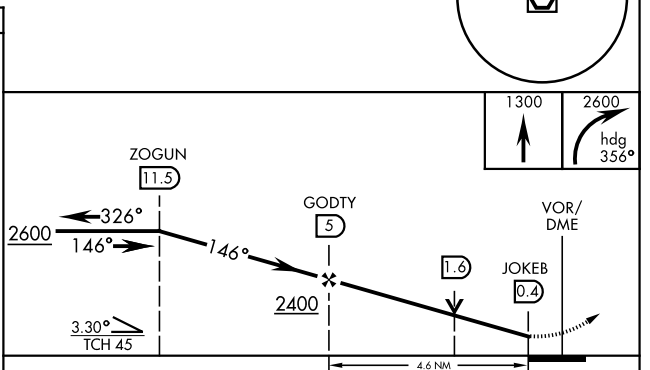
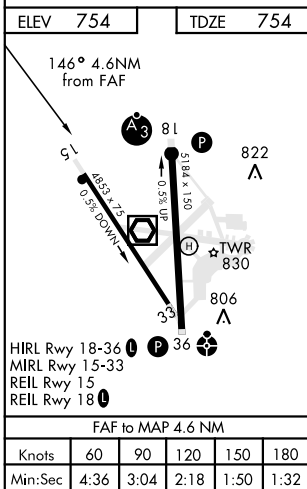
AL-151 [USA]

GODMAN AAF (KFTK)

<p>▼ * Circling not authorized E of Rwy 18-36.</p>		<p>MISSED APPROACH: Climb to 1300, then climbing right turn to 2600 on heading 356° and FTK VOR/DME R-326 to ZOGUN INT/FTK 11.5 DME and hold.</p>	
<p>ATIS★ 109.6</p>	<p>LOUISVILLE APP CON 132.075 327.0</p>	<p>GODMAN TOWER★ 133.35 (CTAF) 0</p>	<p>GND CON 121.9 239.3</p>



Circling to Rwy 18 at night: Operational VGSI required when train is on the track North and East of Rwy 18 (control tower will advise when train is on track) or when tower is closed. When train is on track or tower is closed remain on or above VGSI glidepath until thld.



CATEGORY	A	B	C	D
S-15	1200-1 445 (500-1)		1200-1 3/8 445 (500-1 3/8)	
CIRCLING*	1300-1 545 (600-1)		1300-1 1/2 545 (600-1 1/2)	1320-2 565 (600-2)

VOR/DME RWY 15

SE-1, 25 FEB 2021 to 25 MAR 2021

SE-1, 25 FEB 2021 to 25 MAR 2021