

LOC I-FXE 111.1	APP CRS 091°	Rwy Idg 6002
		TDZE 13
		Apt Elev 13

ILS or LOC RWY 9

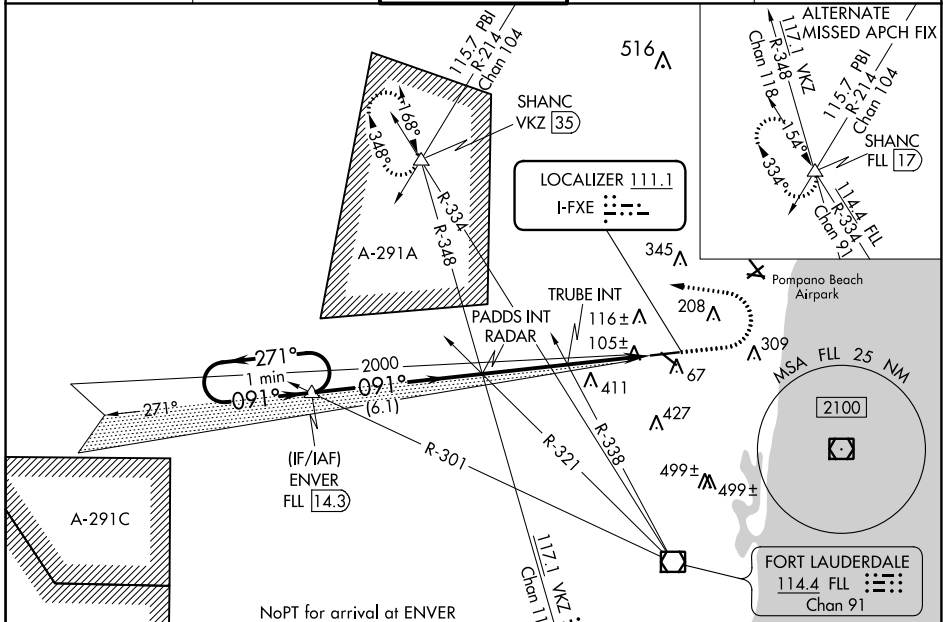
FORT LAUDERDALE EXECUTIVE (FXE)

⚠ When local altimeter setting not received, use Fort Lauderdale/Hollywood Intl altimeter setting and increase S-ILS 9 DA to 231 and increase all MDA 20 feet.

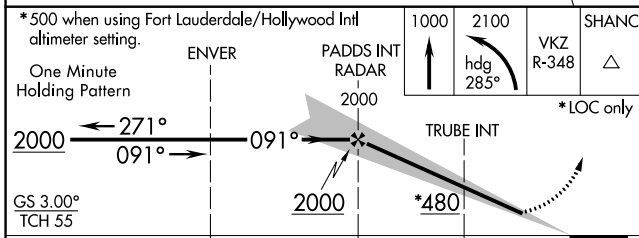
MALS
AS

MISSED APPROACH: Climb to 1000 then climbing left turn to 2100 on heading 285° and on VKZ VOR/DME R-348 to SHANC INT/VKZ 35 DME and hold.

ATIS 119.85	MIAMI APP CON 119.7 306.3	EXECUTIVE TOWER 120.9 239.3	GND CON 121.75	CLNC DEL 127.95
-----------------------	-------------------------------------	---------------------------------------	--------------------------	---------------------------

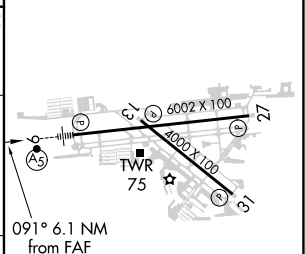


NoPT for arrival at ENVER on V267-437 southeast bound.



ELEV 13	TDZE 13
---------	---------

CATEGORY	A	B	C	D
S-ILS 9	213-½ 200 (200-½)			
S-LOC 9	480-½	467 (500-½)	480-1	467 (500-1)
CIRCLING	520-1	620-1	780-2¼	780-2½
	507 (600-1)	607 (700-1)	767 (800-2¼)	767 (800-2½)
TRUBE FIX MINIMUMS (DUAL VOR RECEIVERS REQUIRED)				
S-LOC 9	360-½	347 (400-½)	360-¾	347 (400-¾)
CIRCLING	520-1	620-1	780-2¼	780-2½
	507 (600-1)	607 (700-1)	767 (800-2¼)	767 (800-2½)



REIL Rwy 13, 27 and 31	6002 X 100	27			
HIRL Rwy 9-27	4000 X 100	51			
MIRL Rwy 13-31					
FAF to MAP 6.1 NM					
Knots	60	90	120	150	180
Min:Sec	6:06	4:04	3:03	2:26	2:02

SE-3, 25 FEB 2021 to 25 MAR 2021

SE-3, 25 FEB 2021 to 25 MAR 2021