


WAAS CH <b>48919</b> <b>W09A</b>	APP CRS <b>091°</b>	Rwy Idg <b>6002</b> TDZE <b>13</b> Apt Elev <b>13</b>
--	------------------------	---

# RNAV (GPS) RWY 9

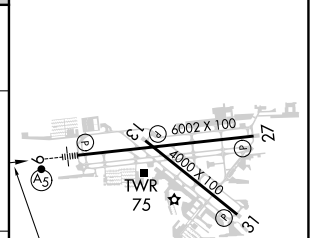
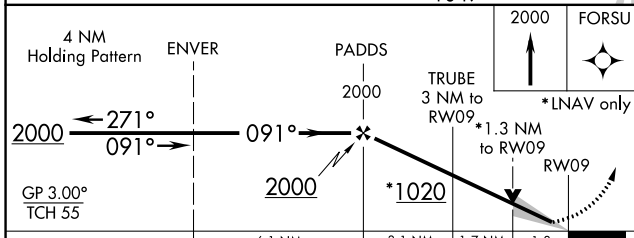
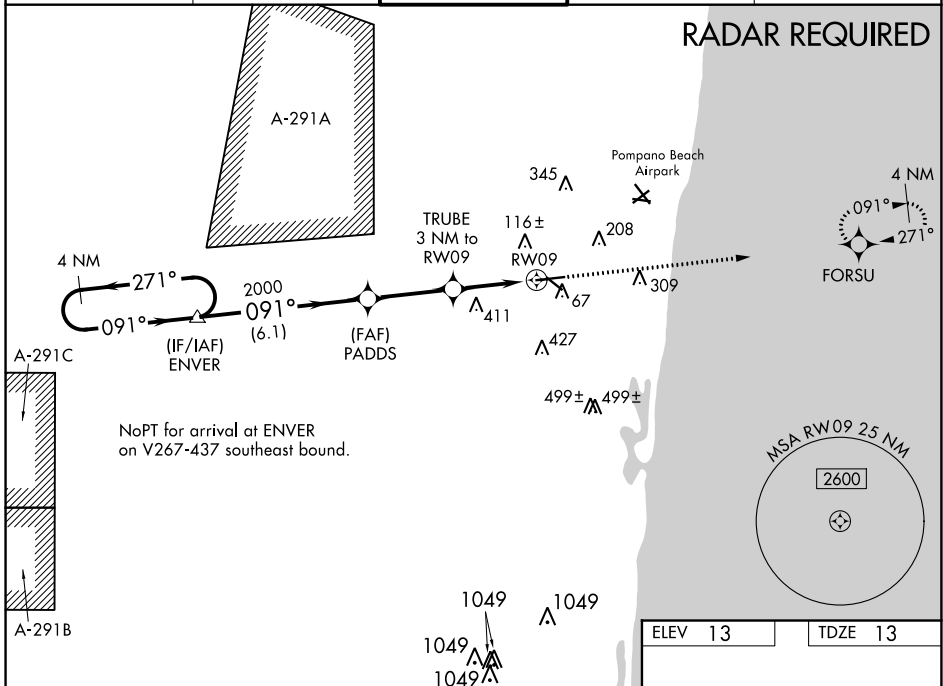
FORT LAUDERDALE EXECUTIVE (FXE)

**⚠** For uncompensated Baro-VNAV systems, LNAV/VNAV NA below 4°C (40°F) or above 54°C (130°F). When local altimeter setting not received, use Fort Lauderdale/Hollywood  
**⚠** Init altimeter setting and increase LPV DA to 231; LNAV/VNAV DA to 445. Increase all MDA 20 feet, increase LNAV/VNAV all Cats visibility to 1. Baro-VNAV and VDP NA when using Fort Lauderdale/Hollywood Intl altimeter setting. DME/DME RNP-0.3 NA.

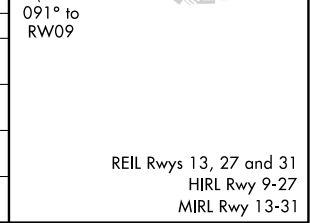
MALSR 

**MISSED APPROACH:**  
Climb to 2000 direct FORSU and hold.

ATIS <b>119.85</b>	MIAMI APP CON <b>119.7 306.3</b>	EXECUTIVE TOWER <b>120.9 239.3</b>	GND CON <b>121.75</b>	CLNC DEL <b>127.95</b>
-----------------------	-------------------------------------	---------------------------------------	--------------------------	---------------------------



CATEGORY	A	B	C	D
LPV DA		213-1/2	200 (200-1/2)	
LNAV/VNAV DA		427-7/8	414 (500-7/8)	
LNAV MDA	480-1/2	467 (500-1/2)	480-1	467 (500-1)
<b>C</b> CIRCLING	520-1 507 (600-1)	620-1 607 (700-1)	780-2 1/4 767 (800-2 1/4)	780-2 1/2 767 (800-2 1/2)



REIL Rwy 13, 27 and 31  
HIRL Rwy 9-27  
MIRL Rwy 13-31

SE-3, 25 FEB 2021 to 25 MAR 2021

SE-3, 25 FEB 2021 to 25 MAR 2021