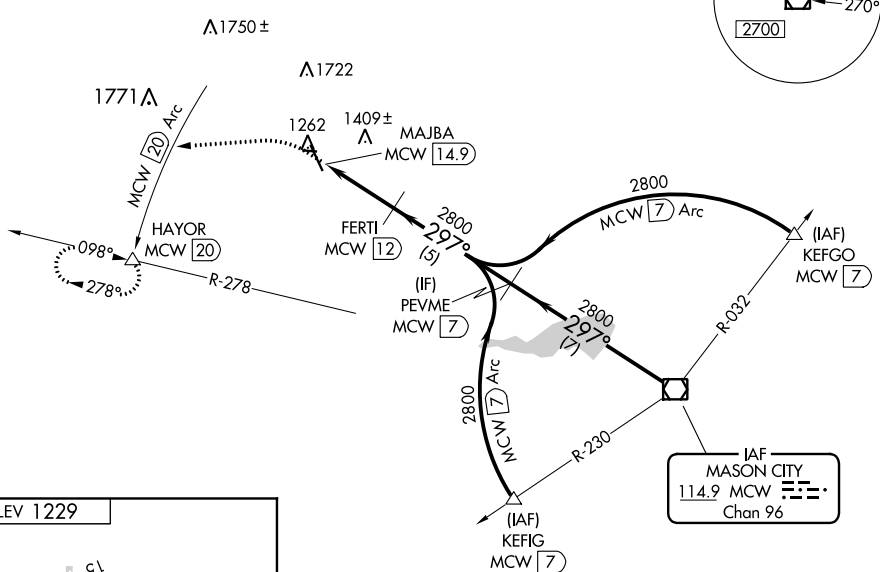
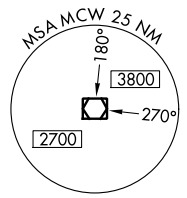


VOR/DME MCW 114.9 Chan 96	APP CRS 297°	Rwy Idg TDZE Apt Elev 1229	N/A N/A 1229
---	------------------------	--	---

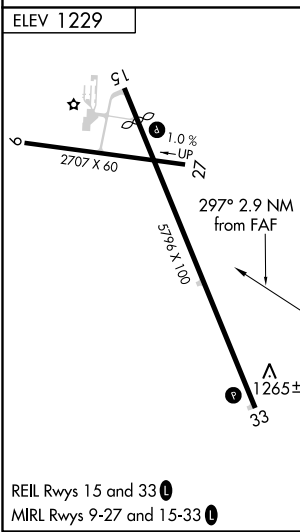
VOR-A
FOREST CITY MUNI (FXY)

DME required.		MISSED APPROACH: Climb to 3000 on heading 260° to MCW 20 DME Arc and on MCW 20 DME Arc counterclockwise to HAYOR/20 DME and hold.
<p>▼ When local altimeter setting not received use Mason City altimeter setting and increase all MDA 40 feet. ▲ Circling to Rwy 9, 27 33 NA at night.</p>		
AWOS-3 123.925	MINNEAPOLIS CENTER 127.3 257.675	UNICOM 122.8 (CTAF)



NC-3, 25 FEB 2021 to 25 MAR 2021

NC-3, 25 FEB 2021 to 25 MAR 2021



Procedure NA for arrivals on MCW VOR/DME airway radials 278 CW 343.

3000	MCW 20 Arc counter-clockwise	HAYOR	FERTI MCW 12	PEVME MCW 7	MCW VOR/DME
↑ hdg 260°		MAJBA MCW 14.9	2800	2800	297° 2800
		2.9 NM	5 NM	7 NM	
CATEGORY	A	B	C	D	
CIRCLING	1680-1 451 (500-1)	1760-1 531 (600-1)	NA		