

VORTAC HCM 108.8 Chan 25	APP CRS 337°	Rwy Idg TDZE Apt Elev	N/A N/A 20
--	------------------------	-----------------------------	---------------------------------------

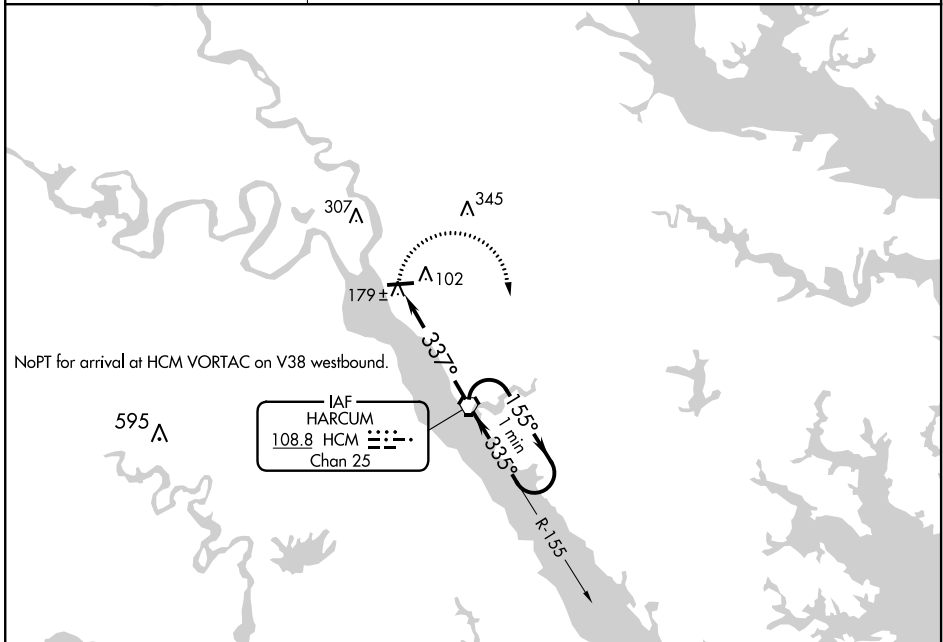
VOR-A

MIDDLE PENINSULA RGNL (F'YJ)

⚠ When local altimeter setting not received, use Newport News altimeter setting and increase all MDA 80 feet.

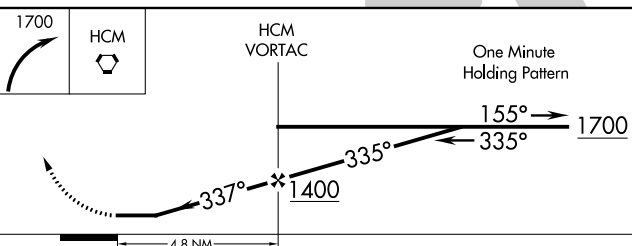
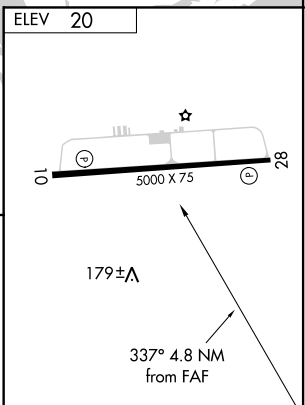
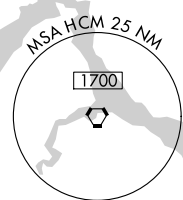
MISSED APPROACH: Climbing right turn to 1700 direct HCM VORTAC and hold.

AWOS-3 132.825	POTOMAC APP CON 126.4 282.375	UNICOM 123.0 (CTAF) 📻
--------------------------	---	--



NoPT for arrival at HCM VORTAC on V38 westbound.

IAF
HARCUM
108.8 HCM
Chan 25



ELEV 20

MIRL Rwy 10-28 **📻**
REIL Rwys 10 and 28 **📻**

FAF to MAP 4.8 NM					
Knots	60	90	120	150	180
Min:Sec	4:48	3:12	2:24	1:55	1:36

CATEGORY	A	B	C	D
📻 CIRCLING	480-1 460 (500-1)	620-1 600 (600-1)	NA	

NE-3, 25 FEB 2021 to 25 MAR 2021

NE-3, 25 FEB 2021 to 25 MAR 2021