

VORTAC RQZ 112.2 Chan 59	APP CRS 010°	Rwy Idg 5500 TDZE 973 Apt Elev 984
--	------------------------	---

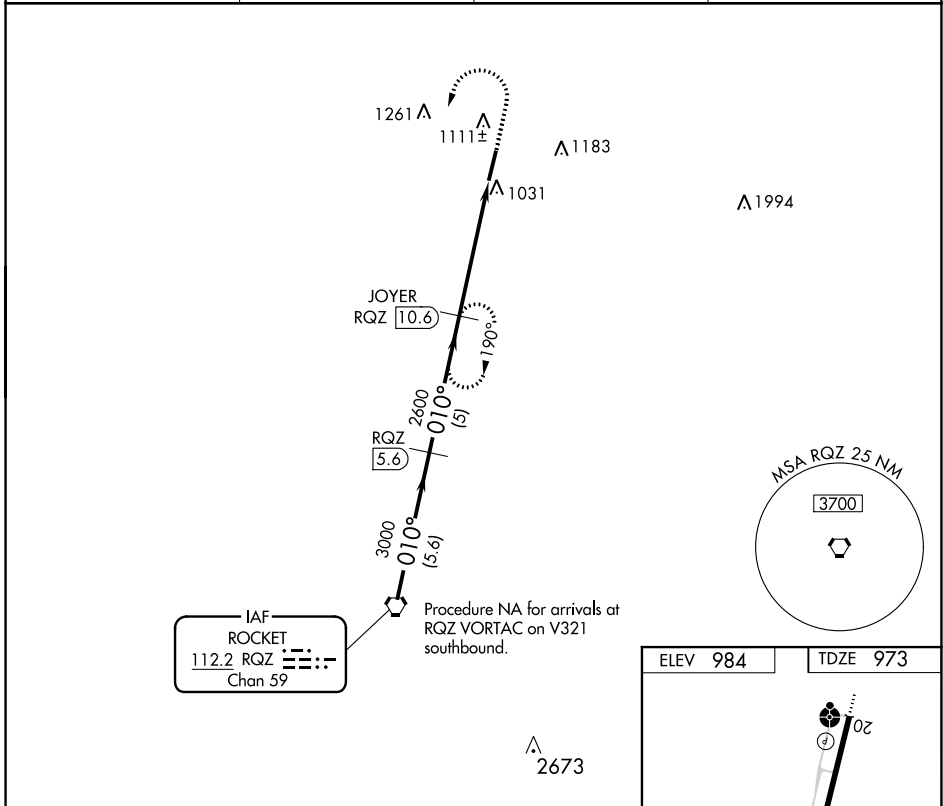
VOR/DME RWY 2

FAYETTEVILLE MUNI (FYM)

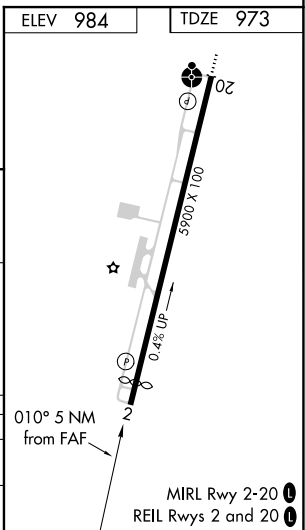
⚠ When local altimeter setting not received, use Huntsville altimeter setting and increase all MDA 120 feet; increase S-2 Cat C/D visibility ¼ mile, Circling Cat C visibility ½ mile, and Circling Cat D visibility ¾ mile. Helicopter visibility reduction below ¾ SM NA.

⚠ MISSED APPROACH: Climb to 2000 then climbing left turn to 3000 via RQZ R-010 to JOYER INT and hold.

AWOS-3 135.275	HUNTSVILLE APP CON ★ 125.6 354.1	CLNC DEL (GCO) 121.725	UNICOM 122.8 (CTAF) 📻
--------------------------	--	----------------------------------	--



RQZ VORTAC	VGSI and descent angles not coincident (VGSI 3.00/TCH 22).			2000	3000	JOYER RQZ 10.6
4000	010°	RQZ 5.6	3000	2600	3.00° TCH 40	RQZ 15.6
Procedure Turn NA	5.6 NM	5 NM	5 NM			
CATEGORY	A	B	C	D		
S-2	1400-1	427 (500-1)	1400-1¼ 427 (500-1¼)	1400-1½ 427 (500-1½)		
CIRCLING	1420-1 436 (500-1)	1540-1 556 (600-1)	1540-1½ 556 (600-1½)	1540-2 556 (600-2)		



SE-1, 25 FEB 2021 to 25 MAR 2021

SE-1, 25 FEB 2021 to 25 MAR 2021