

WAAS CH 45819 W27A	APP CRS 275°	Rwy ldg TDZE Apt Elev	5005 752 752
--	------------------------	-----------------------------	---

RNAV (GPS) RWY 27

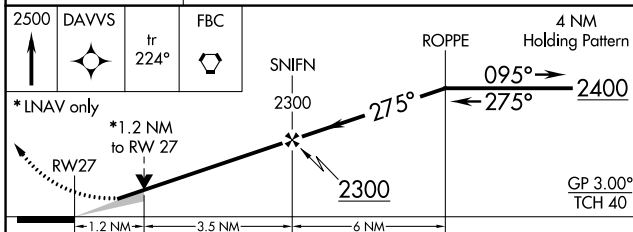
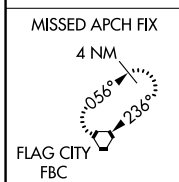
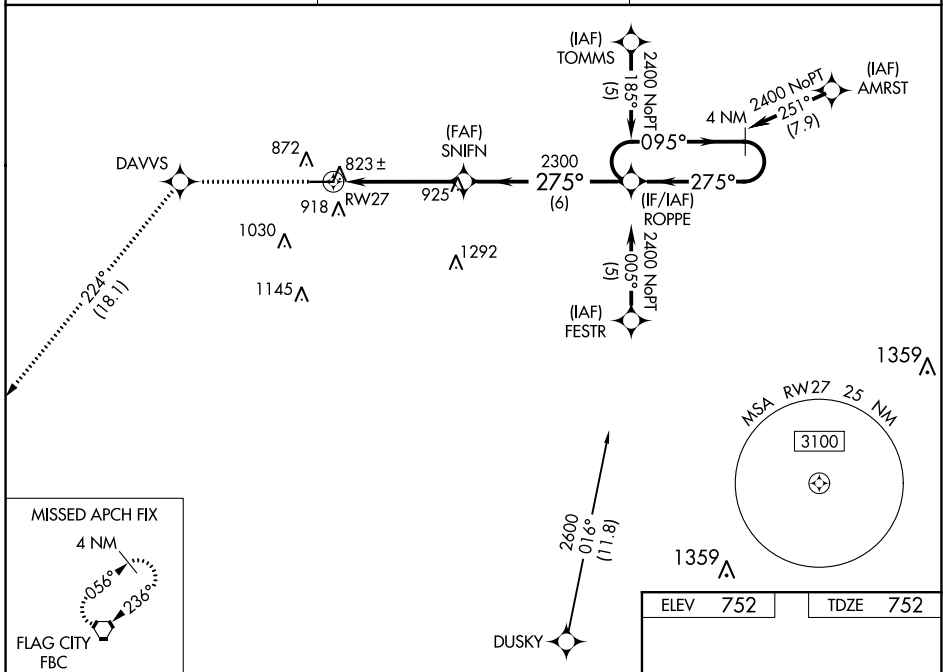
FOSTORIA METROPOLITAN (FZI)

RNP APCH.

NA For uncompensated Baro-VNAV systems, LNAV/VNAV NA below -16°C (4°F) or above 54°C (130°F). Baro-VNAV and VDP NA when using Findlay altimeter setting. When local altimeter setting not received, use Findlay altimeter setting and increase all DA 47 feet and all MDA 60 feet, increase LNAV/VNAV all Cats and Circling Cat C visibility ¼ mile.

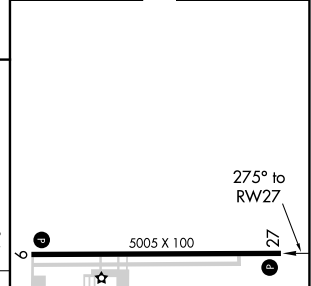
MISSED APPROACH: Climb to 2500 direct DAVVS and on track 224° to FBC VORTAC and hold.

AWOS-3 124.625	TOLEDO APP CON 126.1 307.0	UNICOM 122.7 (CTAF) 0
--------------------------	--------------------------------------	---------------------------------



ELEV 752	TDZE 752
----------	----------

CATEGORY	A	B	C	D
LPV DA	1002-1 250 (300-1)			NA
LNAV/VNAV DA	1131-1¼ 379 (400-1¼)			NA
LNAV MDA	1160-1 408 (500-1)	1160-1¼ 408 (500-1¼)		NA
CIRCLING	1280-1 528 (600-1)	1320-1 568 (600-1)	1320-1½ 568 (600-1½)	NA



REIL Rwy 9 and 27 0
MIRL Rwy 9-27 0

EC-2, 25 FEB 2021 to 25 MAR 2021

EC-2, 25 FEB 2021 to 25 MAR 2021