

WAAS CH 53529 W09A	APP CRS 095°	Rwy Idg 5005 TDZE 752 Apt Elev 752
--	------------------------	---

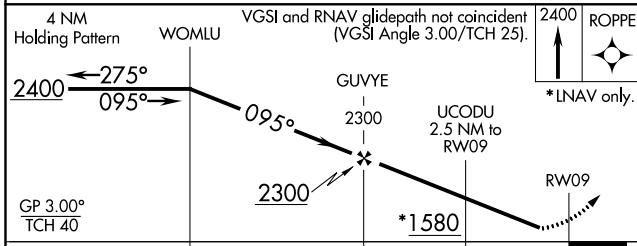
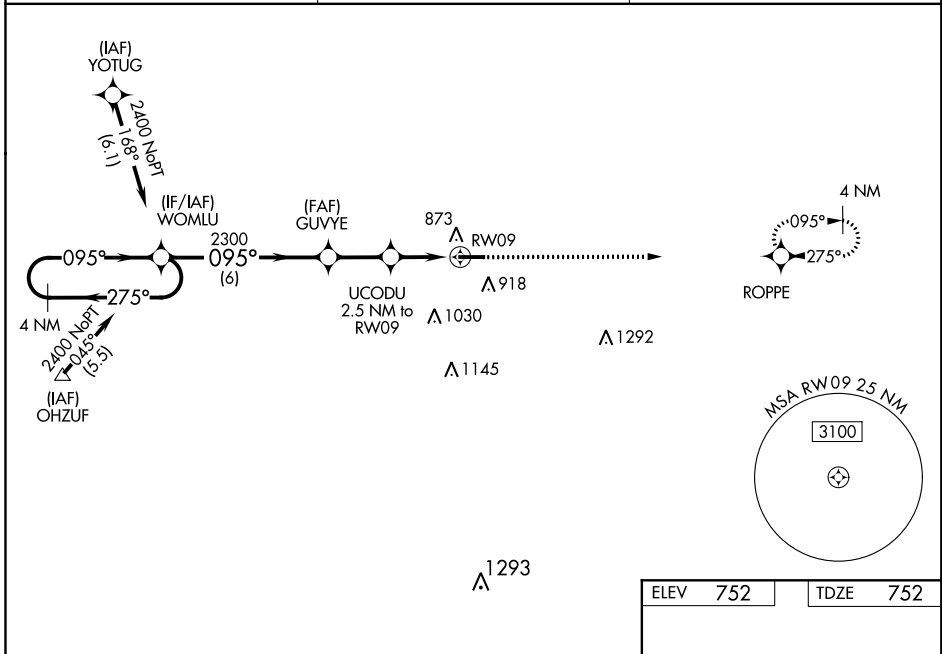
RNAV (GPS) RWY 9

FOSTORIA METROPOLITAN (FZI)

▼ DME/DME RNP-0.3 NA. Visibility reduction by helicopters NA. Baro-VNAV NA when using Findlay altimeter setting. For uncompensated Baro-VNAV systems, LNAV/VNAV NA below -16°C (4°F) or above 54°C (130°F). When local altimeter setting not received, use Findlay altimeter setting and increase all DA 47 feet and all MDA 60 feet, increase LPV and LNAV/VNAV all Cats visibility to 1¼ mile, increase LNAV Cat C visibility to 1⅜, increase Circling Cat C visibility to 1¾. When VGSI inop, Straight-in/Circling Rwy 9 procedure NA at night.

MISSED APPROACH:
Climb to 2400 direct ROPPE and hold.

AWOS-3 124.625	TOLEDO APP CON 126.1 307.0	UNICOM 122.7 (CTAF)
--------------------------	--------------------------------------	-------------------------------



CATEGORY	A	B	C	D
LPV DA	1075-1⅞	323 (400-1⅞)		NA
LNAV/VNAV DA	1074-1⅞	322 (400-1⅞)		NA
LNAV MDA	1180-1	428 (500-1)	1180-1¼ 428 (500-1¼)	NA
CIRCLING	1280-1 528 (600-1)	1320-1 568 (600-1)	1320-1½ 568 (600-1½)	NA

ELEV 752	TDZE 752
----------	----------

Diagram of RWY 9 showing dimensions (5005 X 100) and MRL (9-27). The runway is oriented 095° to RW09.

EC-2, 25 FEB 2021 to 25 MAR 2021

EC-2, 25 FEB 2021 to 25 MAR 2021