

VORTAC FBC 108.2 Chan 19	APP CRS 051°	Rwy Idg TDZE Apt Elev	N/A N/A 752
--	------------------------	-----------------------------	--

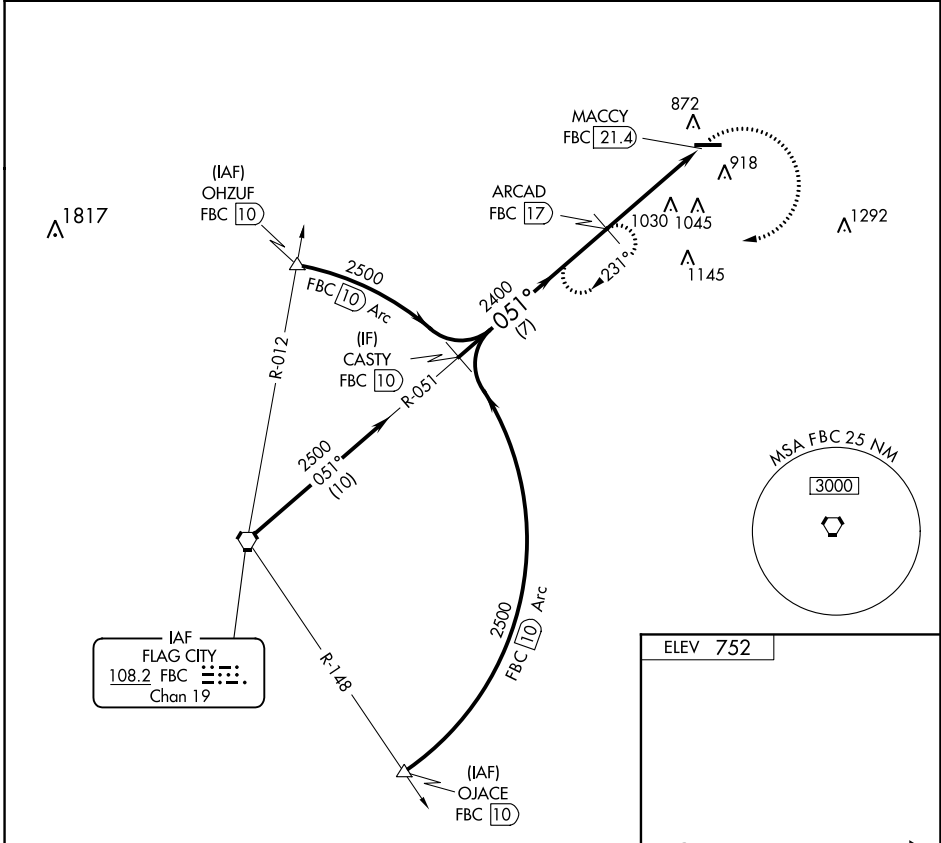
VOR-A
FOSTORIA METROPOLITAN (FZI)

DME required.

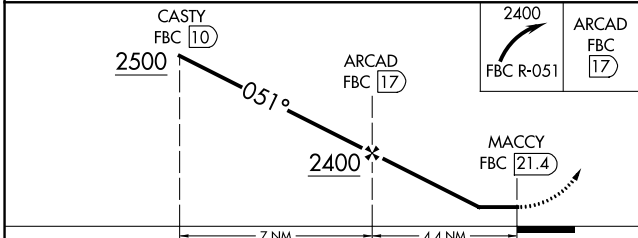
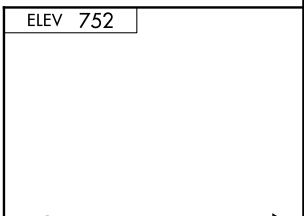
▼ When local altimeter setting not received, use Findlay altimeter setting and increase all MDA 60 feet, and increase Cat C visibility 1/4 mile.

▲ NA MISSED APPROACH: Climbing right turn to 2400 on FBC VORTAC R-051 to ARCAD/FBC 17 DME and hold.

AWOS-3 124.625	TOLEDO APP CON 126.1 307.0	UNICOM 122.7 (CTAF) 0
--------------------------	--------------------------------------	---------------------------------



IAF
FLAG CITY
108.2 FBC
Chan 19



CATEGORY	A	B	C	D	FAF to MAP 4.4 NM					
CIRCLING	1400-1 648 (700-1)	1400-1 1/4 648 (700-1 1/4)	1400-1 3/4 648 (700-1 3/4)	NA	Knots	60	90	120	150	180
					Min:Sec	4:24	2:56	2:12	1:46	1:28

EC-2, 25 FEB 2021 to 25 MAR 2021

EC-2, 25 FEB 2021 to 25 MAR 2021