

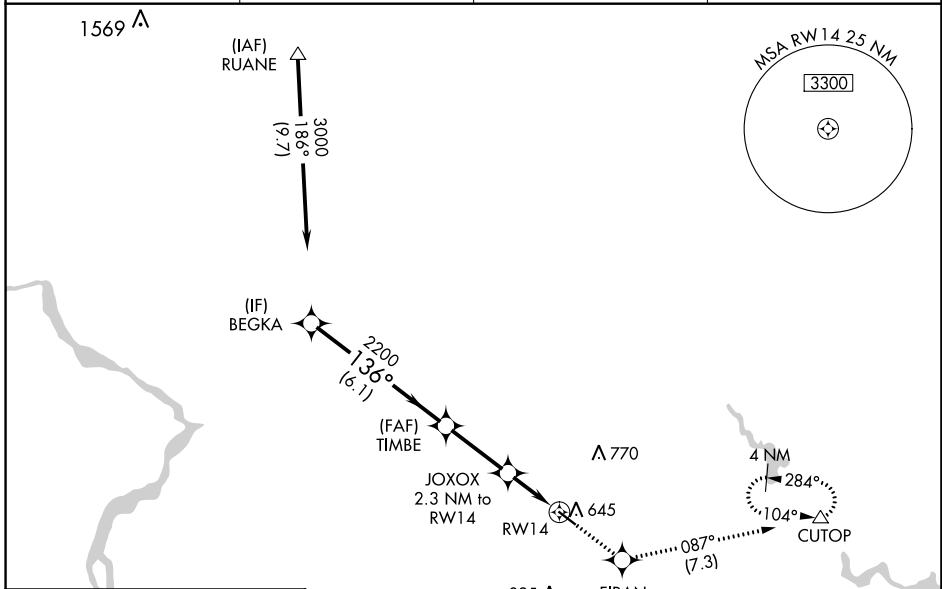
WAAS CH <b>77502</b> <b>W14A</b>	APP CRS <b>136°</b>	Rwy Idg TDZE Apt Elev	<b>4202</b> <b>520</b> <b>539</b>
--	------------------------	-----------------------------	---

# RNAV (GPS) RWY 14

MONTGOMERY COUNTY AIRPARK (GAI)

RNP APCH.	<p>Baro-VNAV NA when using Washington Dulles Intl altimeter setting. For uncompensated Baro-VNAV systems, LNAV/VNAV NA below -16°C or above 36°C. When local altimeter setting not received, use Washington Dulles Intl altimeter setting and increase all DA/MDAs 80 feet and all visibilities ¼ mile. Rwy 14 helicopter visibility reduction below ¼ SM NA.</p>	<p>MISSED APPROACH: Climb to 2100 direct FIRAN and on track 087° to CUTOP and hold.</p>
-----------	---	---

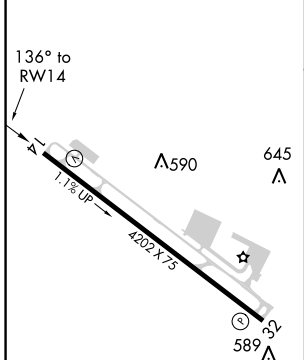
AWOS-3PT <b>128.275</b>	POTOMAC APP CON <b>128.7 307.9</b>	CLNC DEL <b>121.6</b>	UNICOM <b>123.075</b> (CTAF) <b>1</b>
----------------------------	---------------------------------------	--------------------------	--



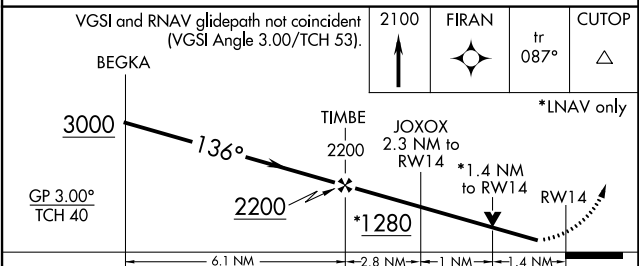
NE-3, 25 FEB 2021 to 25 MAR 2021

NE-3, 25 FEB 2021 to 25 MAR 2021

ELEV 539	TDZE 520
----------	----------



REIL Rws 14 and 32 <b>1</b>
MIRL Rwy 14-32 <b>1</b>



VGSI and RNAV glidepath not coincident (VGSI Angle 3.00/TCH 53).	2100	FIRAN	CUTOP
BEGKA	↑	✧	tr 087° △
3000	2200	1280	
GP 3.00° TCH 40	6.1 NM	2.8 NM	1.4 NM
CATEGORY	A	B	C
LPV DA	789-1 269 (300-1)		
LNAV/VNAV DA	919-1½ 399 (400-1½)		
LNAV MDA	980-1 460 (500-1)	980-1½ 460 (500-1½)	980-1½ 460 (500-1½)