

WAAS CH 61308 W18A	APP CRS 179°	Rwy Idg 6500 TDZE 0 Apt Elev 0
--	------------------------	---

RNAV (GPS) RWY 18

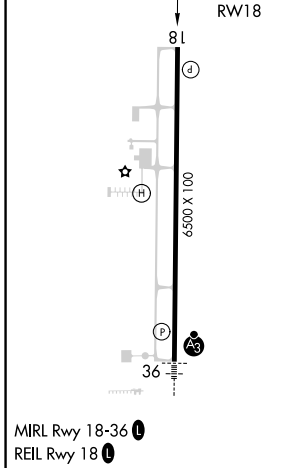
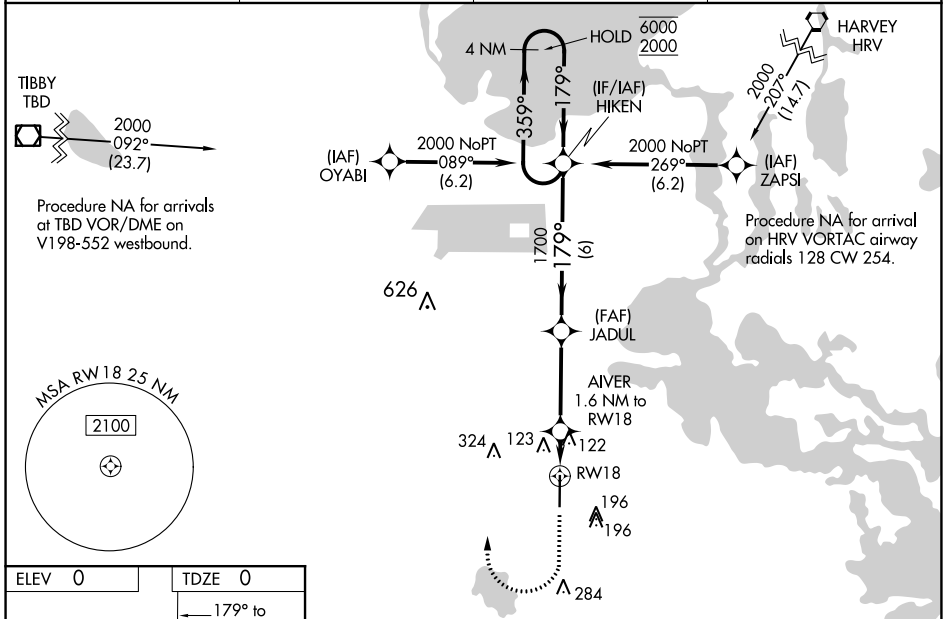
SOUTH LAFOURCHE LEONARD MILLER JR (G.A.O)

RNP APCH.

⚠ Rwy 18 helicopter visibility reduction below 3/4 SM NA. For uncompensated Baro-VNAV systems, LNAV/VNAV NA below -15°C or above 54°C. When local altimeter setting not received, use Louis Armstrong New Orleans Intl altimeter setting and increase all DA 77 feet and all MDA 80 feet and increase LPV all Cats visibility 1/4 mile, LNAV/VNAV Cat A and B visibility 1/4 mile and Cat C and D visibility 1/8 mile, LNAV Cat C and D visibility 3/8 mile and Circling Cat C and D visibility 1/4 mile. Baro-VNAV and VDP NA when using Louis Armstrong New Orleans Intl altimeter setting.

MISSED APPROACH: Climb to 520 then climbing right turn to 2000 direct HIKEN and hold.

AWOS-3PT 118.175	NEW ORLEANS APP CON 120.85 256.9	CINC DEL 120.85	UNICOM 123.0 (CTAF) 0
----------------------------	--	---------------------------	---------------------------------



520	2000	HIKEN	VGSI and RNAV glidepath not coincident (VGSI Angle 3.00/TCH 38).		4 NM Holding Pattern
*LNAV only.	AIVER 1.6 NM to RW18	JADUL 1700	HIKEN	359° → 6000	← 179° 2000
1.1 NM to RW18	560	1700	179°	GP 3.00° TCH 51	
1.1	0.5	3.6 NM	6 NM		
CATEGORY	A	B	C	D	
LPV DA	319-1 319 (400-1)				
LNAV/VNAV DA	284-7/8	284 (300-7/8)	284-1	284 (300-1)	
LNAV MDA	380-1	380 (400-1)	380-1 3/4	380-2 380 (400-2)	
CIRCLING	440-1 440 (500-1)	560-1 560 (600-1)	640-1 3/4	640-2 640 (700-2)	

SC-4, 25 FEB 2021 to 25 MAR 2021

SC-4, 25 FEB 2021 to 25 MAR 2021