

APP CRS 235°	Rwy ldg 3999
	TDZE 566
	Apt Elev 566

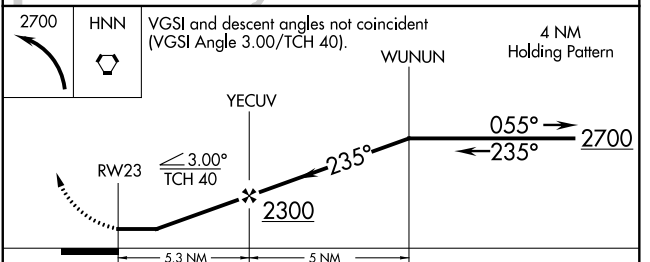
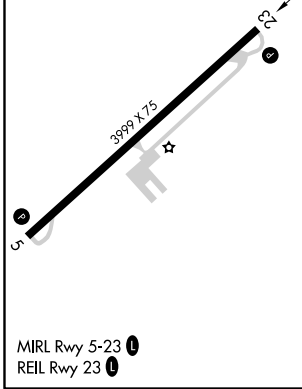
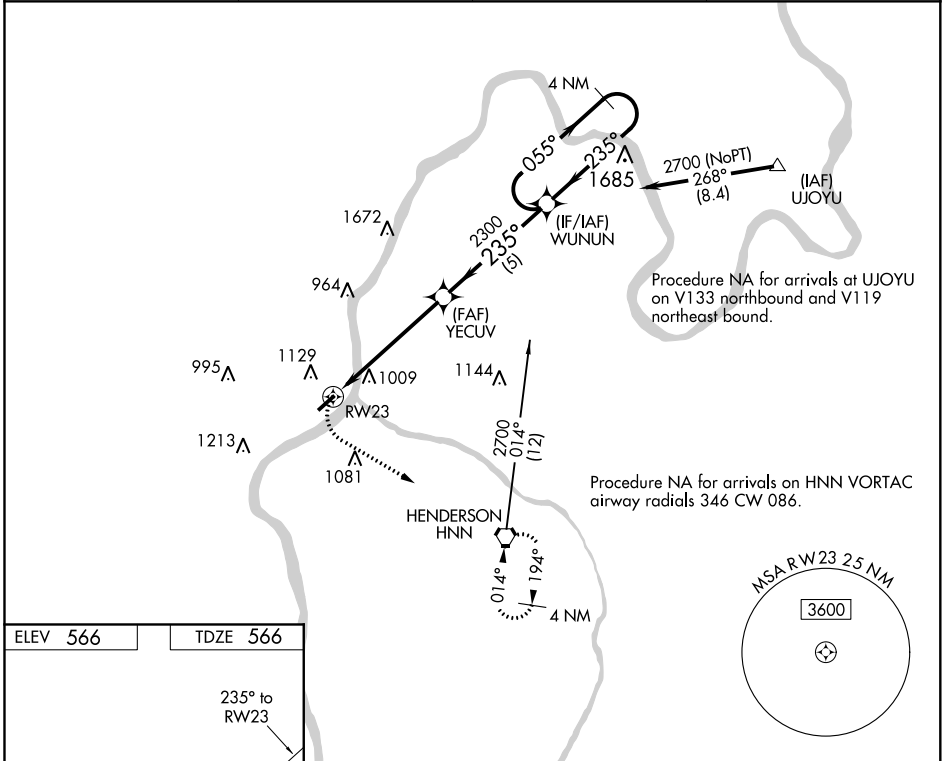
RNAV (GPS) RWY 23

GALLIA-MEIGS RGNL (GAS)

▽ DME/DME RNP-0.3 NA. Procedure NA at night. Helicopter visibility reduction below
▲ NA 1 SM NA. When local altimeter setting not received, use Point Pleasant altimeter setting and increase all MDA 40 feet, and increase Circling Cat C visibility ¼ mile.

MISSED APPROACH:
 Climbing left turn to 2700
 direct HNN VORTAC and hold.

AWOS-3 119.925	HUNTINGTON APP CON 128.4 270.1	CLNC DEL 124.55	UNICOM 123.0 (CTAF) 0
--------------------------	--	---------------------------	---------------------------------



CATEGORY	A	B	C	D
LNAV MDA	1360-1 794 (800-1)	1360-1¼ 794 (800-1¼)	1360-2½ 794 (800-2½)	NA
CIRCLING	1440-1¼	874 (900-1¼)	1440-2½ 874 (900-2½)	NA

EC-2, 25 FEB 2021 to 25 MAR 2021

EC-2, 25 FEB 2021 to 25 MAR 2021