

# NDB RWY 35

GREAT BEND MUNI (GBD)

LOM GB <b>419</b>	APP CRS <b>351°</b>	Rwy Idg <b>7851</b>	TDZE <b>1883</b>
		Apt Elev <b>1887</b>	

**NA**

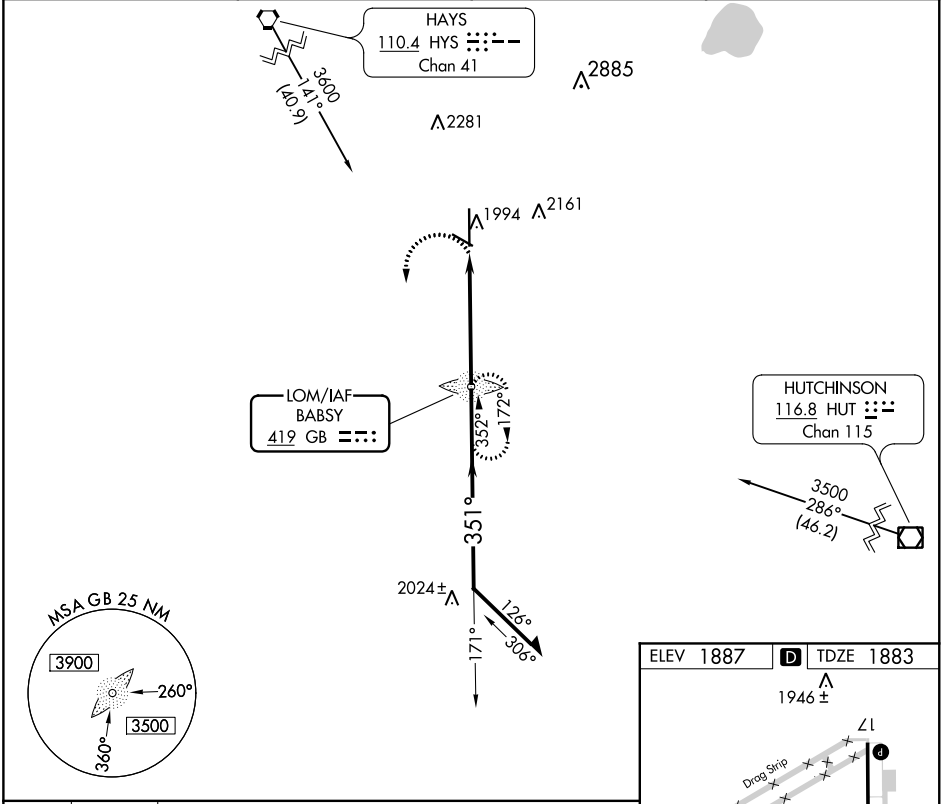
MALSR

MISSED APPROACH: Climbing left turn to 3500 direct BABS Y LOM and hold.

AWOS-3PT  
**119.275**

KANSAS CITY CENTER  
**118.8 322.425**

UNICOM  
**122.8 (CTAF) 0**



NC-2, 25 FEB 2021 to 25 MAR 2021

NC-2, 25 FEB 2021 to 25 MAR 2021

