


WAAS CH 65710 W35A	APP CRS 352°	Rwy Idg TDZE 1883 Apt Elev 1887	7851 1883 1887
--	------------------------	---	---

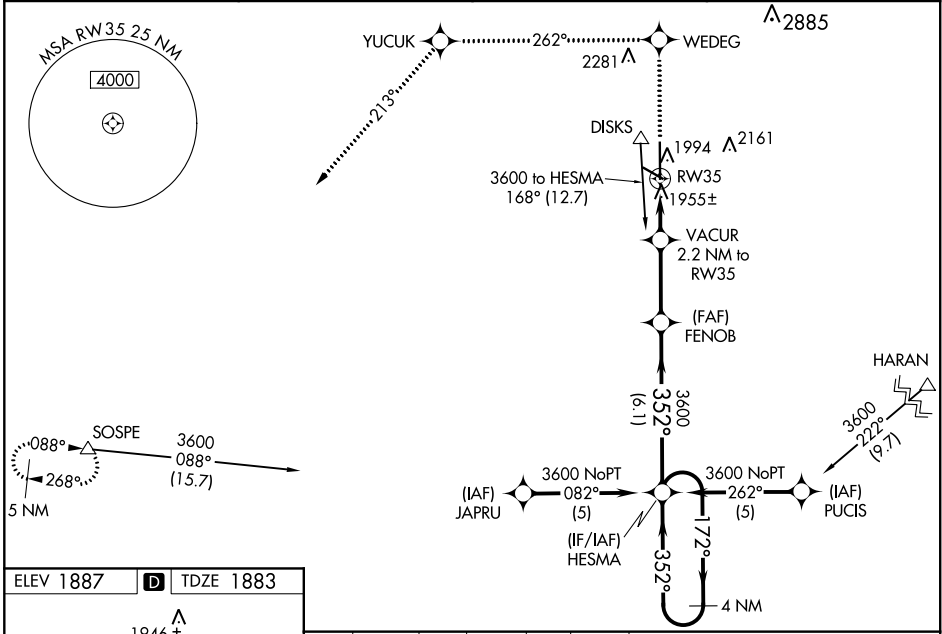
RNAV (GPS) RWY 35

GREAT BEND MUNI (G.B.D)

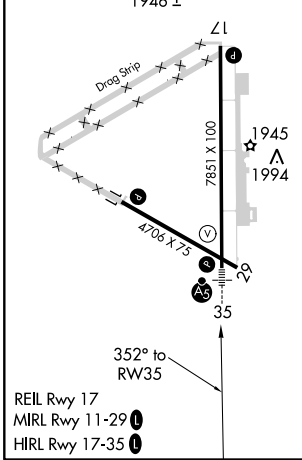
⚠ For uncompensated Baro-VNAV systems, LNAV/VNAV NA below -18°C (0°F) or above 54°C (130°F). DME/DME RNP-0.3 NA. When local altimeter setting not received, use Russell Muni altimeter setting and increase all DA 77 feet and all MDA 80 feet. Increase LPV and LNAV/VNAV all Cats, LNAV Cat C and Circling Cat D visibility ¼ mile. For inoperative MALSR increase LPV all Cats visibility to 1 mile. For inoperative MALSR when using Russell Muni altimeter setting increase LPV all Cats and LNAV Cat D visibility to 1¼ mile. Baro-VNAV and VDP NA when using Russell Muni altimeter setting. Inoperative table does not apply to LNAV Cat D.

MALSR

MISSED APPROACH: Climb to 4500 direct WEDEG and via 262° track to YUCUK then via 213° track to SOSPE and hold.

AWOS-3PT 119.275	KANSAS CITY CENTER 118.8 322.425	UNICOM 122.8 (CTAF) 0
----------------------------	--	---------------------------------



ELEV 1887	D	TDZE 1883
-----------	----------	-----------



4500	WEDEG	YUCUK	SOSPE
↑	262° tr	213° tr	△

*LNAV only

VACUR 2.2 NM to RW35
FENOB
HESMA
4 NM Holding Pattern

*0.9 NM to RW35
2620*

352°
3600
172°
3600

0.9
1.3 NM
3 NM
6.1 NM

CATEGORY	A	B	C	D
LPV DA	2171-½	288 (300-½)		
LNAV/VNAV DA	2222-¾	339 (400-¾)		
LNAV MDA	2220-½	337 (400-½)	2220-1 337 (400-1)	
CIRCLING	2300-1 413 (500-1)	2340-1 453 (500-1)	2340-1½ 453 (500-1½)	2500-2 613 (700-2)

GP 3.00°
TCH 49

NC-2, 25 FEB 2021 to 25 MAR 2021

NC-2, 25 FEB 2021 to 25 MAR 2021