

WAAS CH <b>50428</b> <b>W21A</b>	APP CRS <b>205°</b>	Rwy Idg TDZE Apt Elev	<b>5792</b> <b>764</b> <b>764</b>
--	------------------------	-----------------------------	---

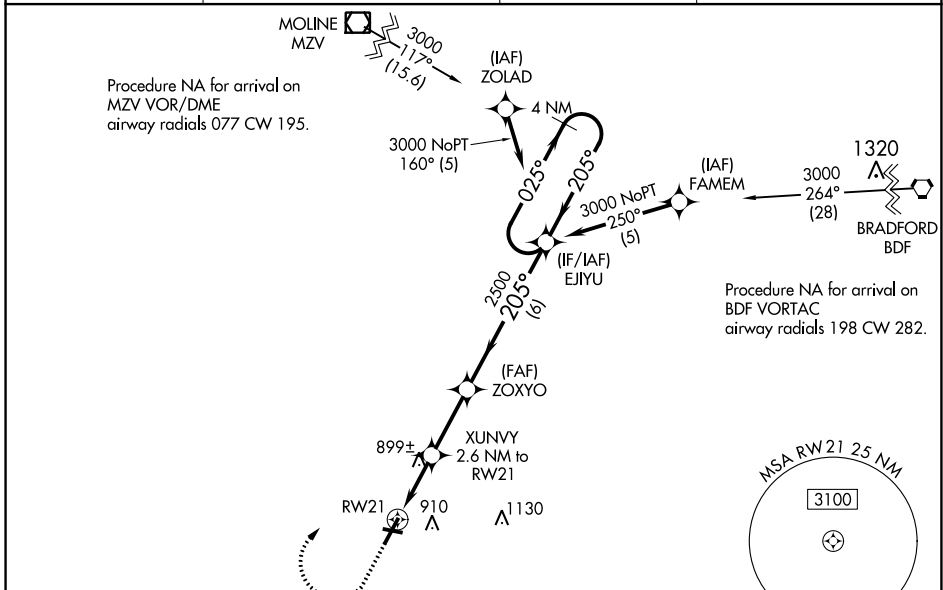
# RNAV (GPS) RWY 21

GALESBURG MUNI (GBG)

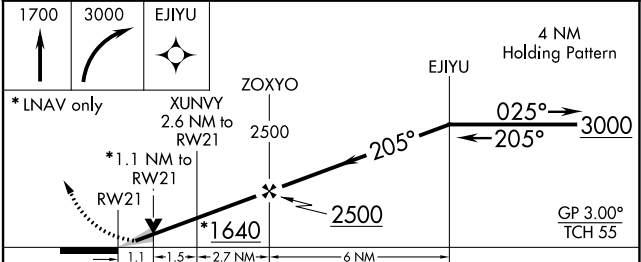
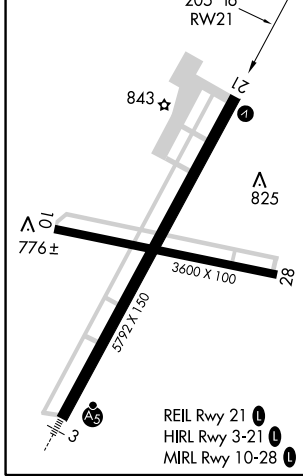
**⚠** For uncompensated Baro-VNAV systems, LNAV/VNAV NA below -16°C (4°F) or above 39°C (102°F). Circling Rwy 10 NA at night. DME/DME RNP-0.3 NA. When local altimeter setting not received, use Macomb altimeter setting and increase all DA 71 feet and all MDA 80 feet, increase LPV visibility to ½ SM all Cats, increase LNAV/VNAV visibility to 1¼ SM all Cats, increase LNAV Cats C/D visibility to 1½ SM. VDP and Baro-VNAV NA when using Macomb altimeter setting.

**MISSED APPROACH:** Climb to 1700 then climbing right turn to 3000 direct EJIYU and hold.

AWOS-3 <b>118.975</b>	QUAD CITY APP CON ★ <b>133.275 257.8</b>	CLNC DEL <b>120.7</b>	UNICOM <b>123.0 (CTAF)</b> <b>📻</b>
--------------------------	---	--------------------------	--



ELEV 764	TDZE 764
----------	----------



CATEGORY	A	B	C	D
LPV DA		964-¾	200 (200-¾)	
LNAV/VNAV DA		1060-7/8	296 (300-7/8)	
LNAV MDA	1160-1	396 (400-1)	1160-1½	396 (400-1½)
CIRCLING	1220-1	456 (500-1)	1220-1½	1340-2 576 (600-2)

EC-3, 25 FEB 2021 to 25 MAR 2021

EC-3, 25 FEB 2021 to 25 MAR 2021