

WAAS CH 73010 W09A	APP CRS 091°	Rwy Idg TDZE Apt Elev	4471 3669 3703
--	------------------------	-----------------------------	---

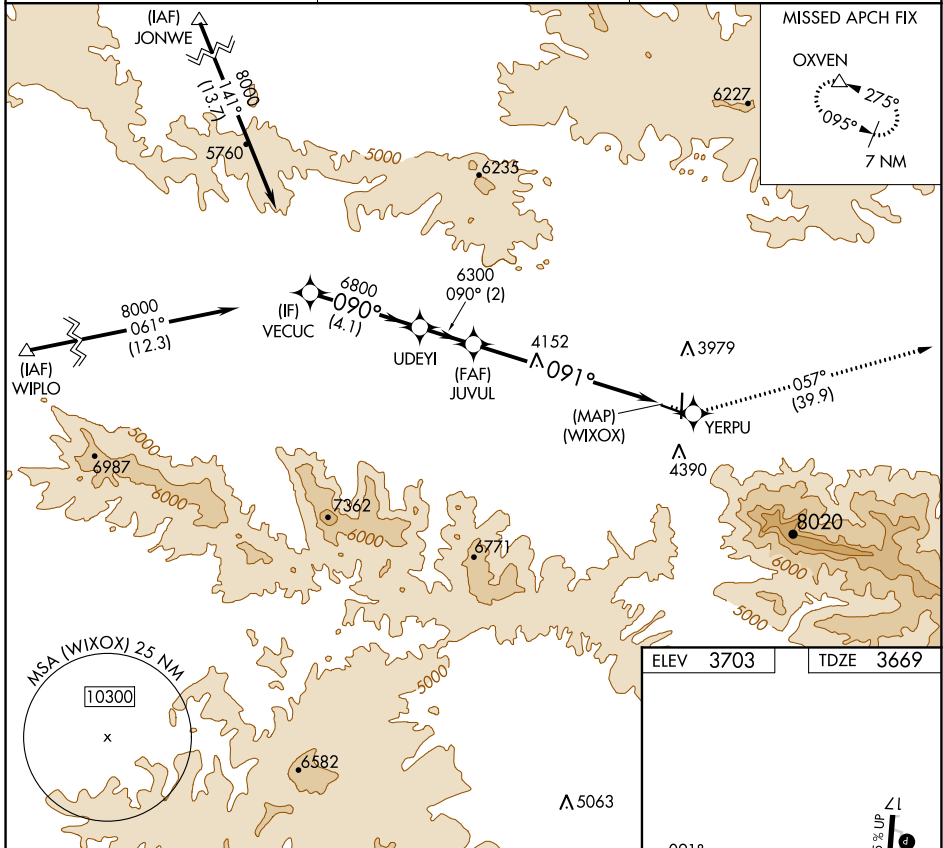
RNAV (GPS) Z RWY 9

GRANT COUNTY RGNL/OGILVIE FIELD (GCD)

▼ When local altimeter setting not received, procedure NA. DME/DME RNP-0.3 NA. Helicopter visibility reduction below 3/4 SM NA.

MISSED APPROACH: Climb to 12000 direct YERPU and on track 057° to OXVEN and hold, continue climb-in-hold to 12000.

AWOS-3 118.375	SEATTLE CENTER 128.15 257.75	UNICOM 122.8 (CTAF) 0
--------------------------	--	--



NW-1, 25 FEB 2021 to 25 MAR 2021

NW-1, 25 FEB 2021 to 25 MAR 2021

VECUC		UDEYI		JUUVUL		YERPU		OXVEN	
8000		6800		6300		12000		tr 057°	
GP 3.40°		6300		(WIXOX)		VGSI and RNAV glidepath not coincident (VGSI Angle 3.00/TCH 45).		ZL 3707	
TCH 54		4.1 NM		2 NM		7.1 NM		5220 X 60	
CATEGORY		A		B		C		D	
LPV DA		4269-2		600 (600-2)		NA		REIL Rwy 17 and 9 0	
								MIRL Rwy 9-27 and 17-35 0	