

LOC I-GCN 108.9	APP CRS 030°	Rwy Idg 8999
		TDZE 6556
		Apt Elev 6609

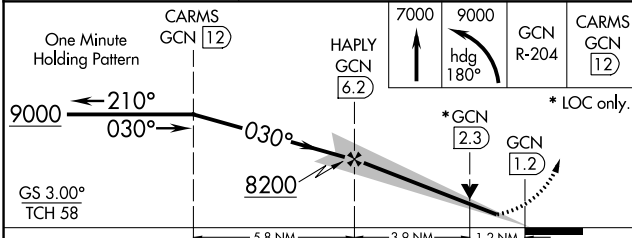
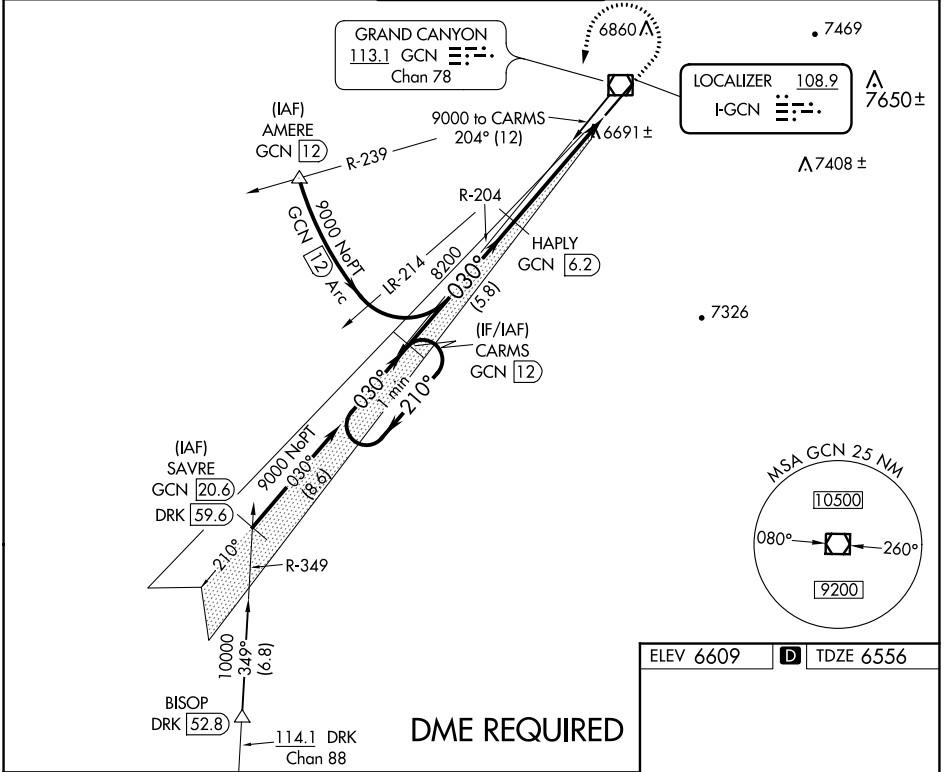
ILS or LOC RWY 3

GRAND CANYON NATIONAL PARK (GCN)

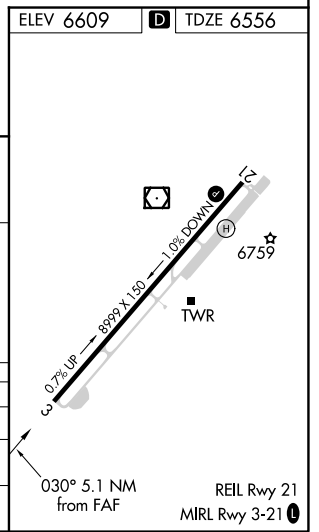
⚠ DME from GCN VOR/DME. Simultaneous reception of I-GCN and GCN DME required. DME required.

⚠ MISSED APPROACH: Climb to 7000 then climbing left turn to 9000 on heading 180° and on GCN VOR/DME R-204 direct CARMS/GCN 12 DME and hold.

ATIS 124.3	LOS ANGELES CENTER 124.85 319.2	CANYON TOWER* 119.0 (CTAF) 0	GND CON 121.9	UNICOM 122.95
----------------------	---	--	-------------------------	-------------------------



CATEGORY	A	B	C	D
S-ILS 3	6795-3/4 239 (200-3/4)			
S-LOC 3	6960-1	404 (400-1)	6960-1 1/8	404 (400-1 1/8)
C CIRCLING	7140-1 531 (600-1)	7200-1 591 (600-1)	7280-2 671 (700-2)	7620-3 1011 (1100-3)



SW-4, 25 FEB 2021 to 25 MAR 2021

SW-4, 25 FEB 2021 to 25 MAR 2021