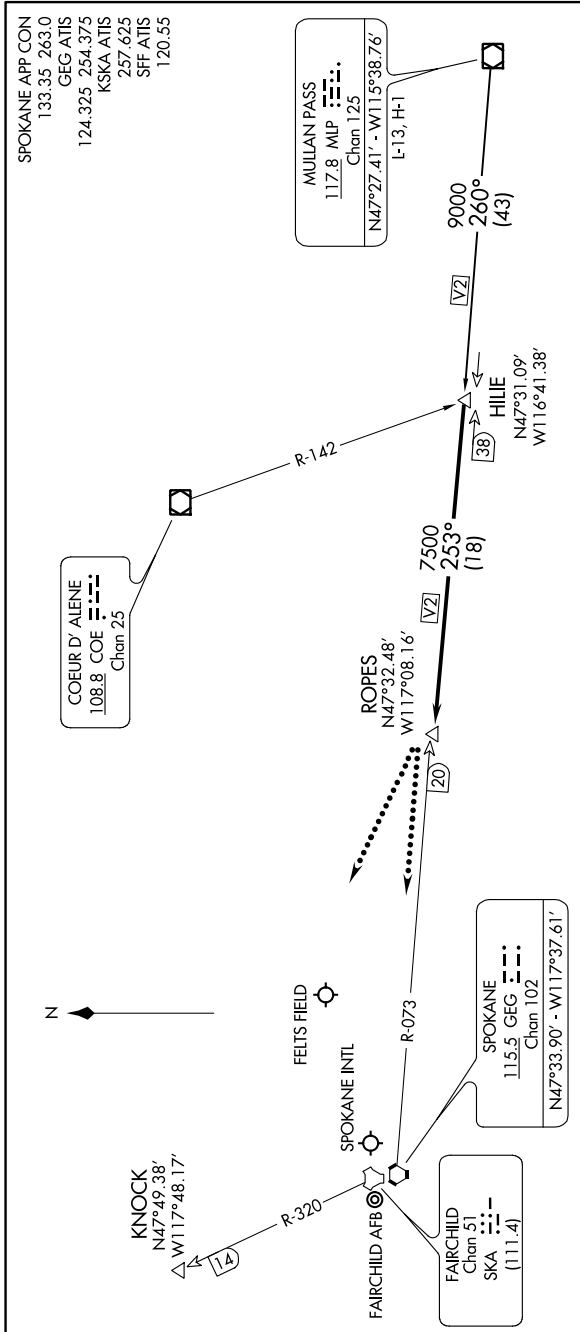


HILIE TWO ARRIVAL (HILIE.HILIE2)

AL-403 (FAA)

SPOKANE, WASHINGTON

NW-1, 25 FEB 2021 to 25 MAR 2021



SPOKANE APP CON
133.35 263.0
GEG ATIS
124.325 254.375
KSKA ATIS
257.625
SFF ATIS
120.55

COEUR D'ALENE
108.8 COE
Chan 25

MULLAN PASS
117.8 MLP
Chan 125
N47°27.41' - W115°38.76'
L-13; H-1

SPOKANE
115.5 GEG
Chan 102
N47°33.90' - W117°37.61'

FAIRCHILD
Chan 51
SKA
(111.4)

NOTE: DME and RADAR required.
NOTE: Chart not to scale.

ARRIVAL ROUTE DESCRIPTION

MULLAN PASS TRANSITION (MLP.HILIE2): From over MLP VOR/DME via MLP R-260 to HILIE INT. Thence. . .

. . . From over HILIE INT via GEG R-073 to ROPEES. Expect radar vectors to final approach course.

LOST COMMUNICATIONS: After ROPEES:

Landing Spokane Intl or Felts Field: Proceed to GEG VORTAC via GEG R-073, maintain last assigned altitude to GEG.

Landing Fairchild AFB: Proceed to KNOCK via direct, maintain last assigned altitude to KNOCK.

HILIE TWO ARRIVAL (HILIE.HILIE2)

SPOKANE, WASHINGTON

NW-1, 25 FEB 2021 to 25 MAR 2021