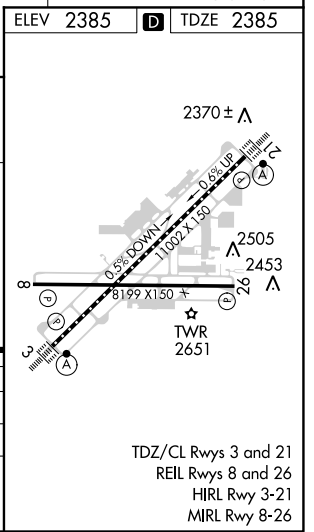
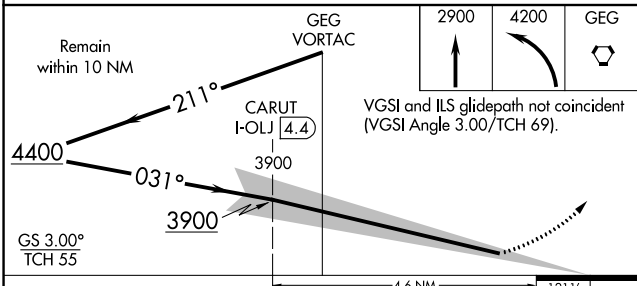
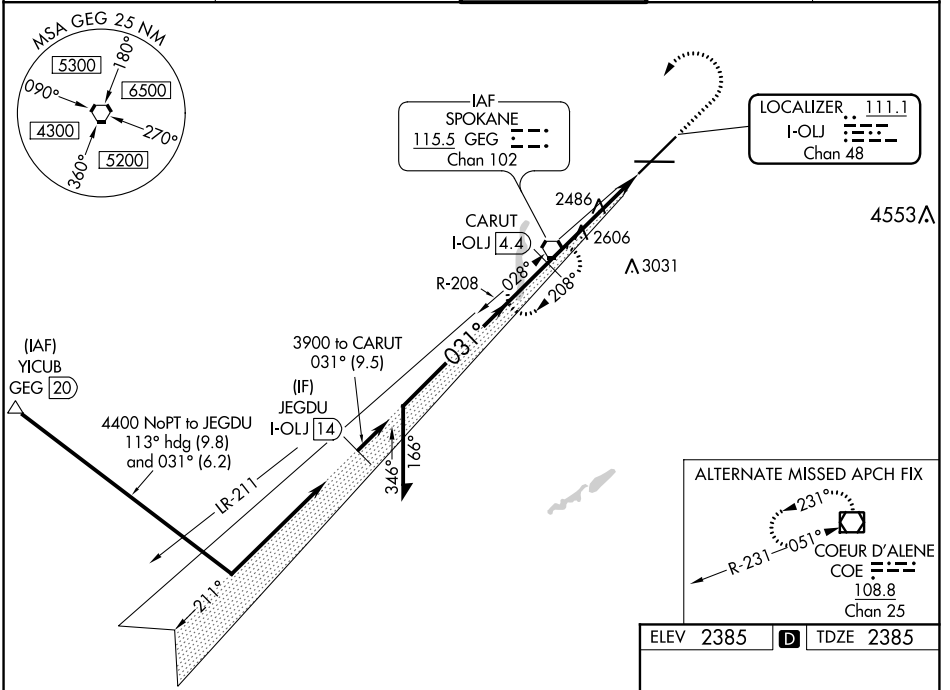


LOC/DME I-OLJ 111.1 Chan 48	APP CRS 031°	Rwy Idg TDZE 2385 Apt Elev 2385
--	------------------------	---

ILS RWY 3 (CAT II & III)

SPOKANE INTL (GEG)

⚠ CAT II: RVR 1000 authorized with specific OPSPEC, MSPEC, or LOA approval and use of autoland or HUD to touchdown.	ALS-F2 	MISSED APPROACH: Climb to 2900 then climbing left turn to 4200 direct GEG VORTAC and hold.		
	ATIS 124.325 254.375	SPOKANE APP CON 123.75 282.25 (205°-025°) 133.35 263.0 (026°-204°)	SPOKANE TOWER 118.3 278.3	GND CON 121.9 348.6



CATEGORY	A	B	C	D
S-ILS 3	CAT II RA 104/12 100 DA 2485			
S-ILS 3	CAT III RVR 03			

CATEGORY II & III ILS - SPECIAL AIRCREW & AIRCRAFT CERTIFICATION REQUIRED

NW-1, 25 FEB 2021 to 25 MAR 2021

NW-1, 25 FEB 2021 to 25 MAR 2021