

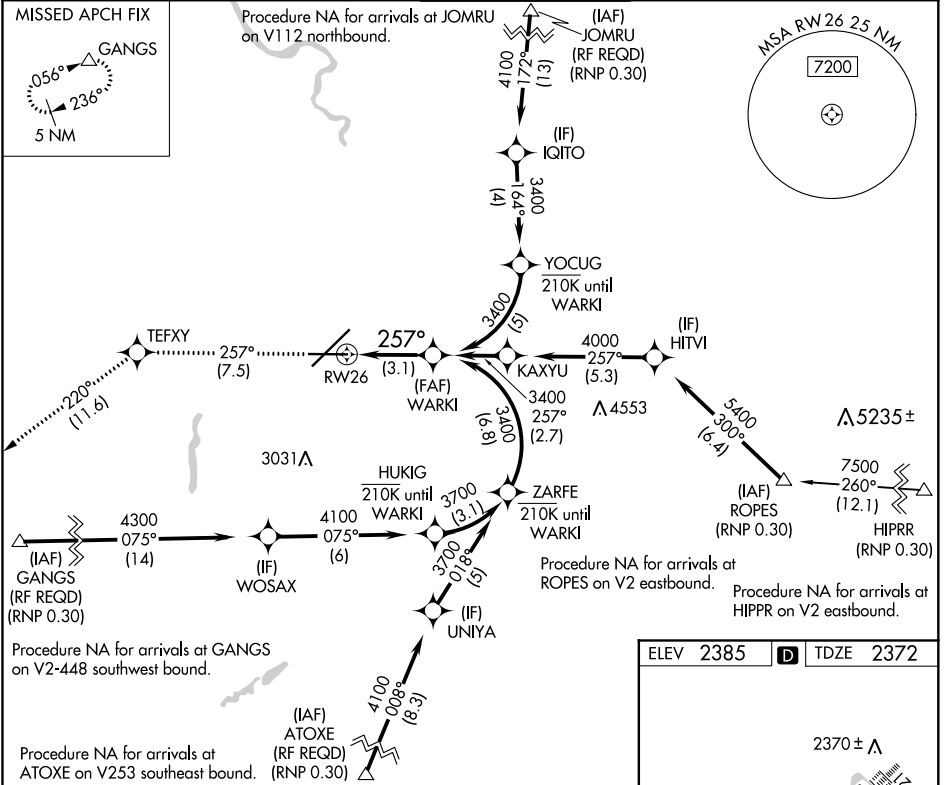
APP CRS	Rwy Idg	8199
257°	TDZE	2372
	Apt Elev	2385

RNAV (RNP) Z RWY 26

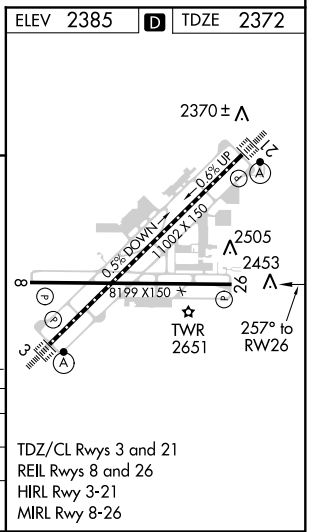
SPOKANE INTL (GEG)

RNP AR APCH.	MISSED APPROACH: Climb to 5000 on track 257° to TEFXY and on track 220° to GANGS and hold.
▼ For uncompensated Baro-VNAV systems, procedure NA below -17°C or above 54°C.	

ATIS 124.325 254.375	SPOKANE APP CON 123.75 282.25 (205°-025°) 133.35 263.0 (026°-204°)	SPOKANE TOWER 118.3 278.3	GND CON 121.9 348.6	CLNC DEL 127.55
--------------------------------	----------------------------------------------------------------------------------------	-------------------------------------	-------------------------------	---------------------------



5000	TEFXY	tr 220°	GANGS	WARKI
tr 257°				3400
RW26				3400
See planview for multiple IF locations.				
3.1 NM				
CATEGORY	A	B	C	D
RNP 0.11 DA		2745-1¼	373 (400-1¼)	
RNP 0.30 DA		2795-1¾	423 (500-1¾)	
AUTHORIZATION REQUIRED				



TDZ/CL Rwsy 3 and 21
 REIL Rwsy 8 and 26
 HIRL Rwy 3-21
 MIRL Rwy 8-26

NW-1, 25 FEB 2021 to 25 MAR 2021

NW-1, 25 FEB 2021 to 25 MAR 2021