

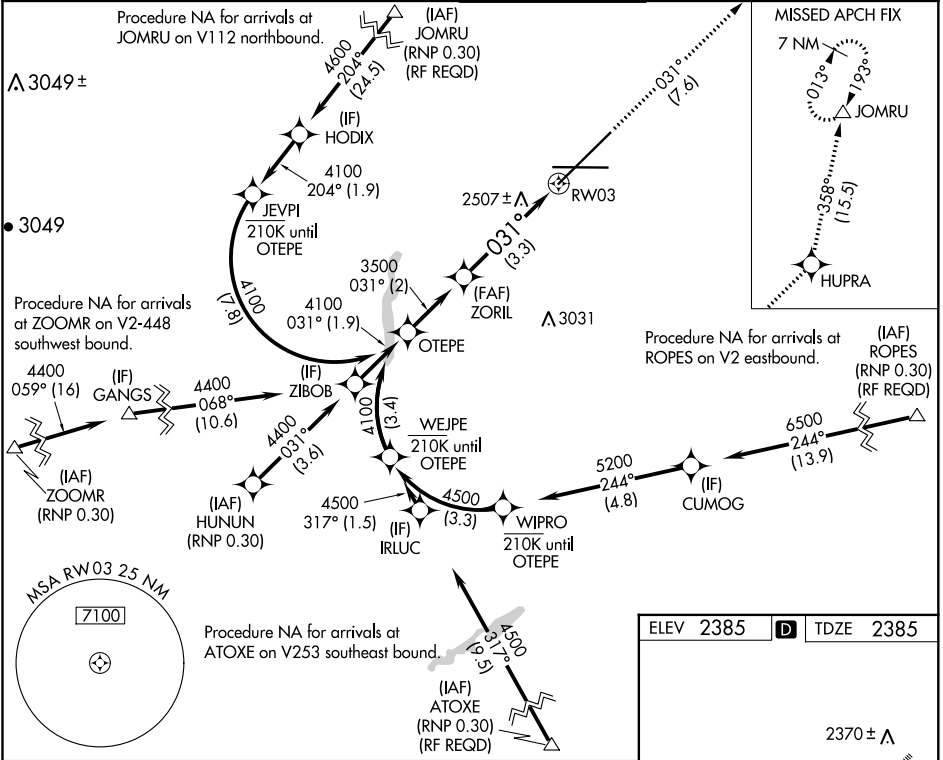
# RNAV (RNP) Z RWY 3

SPOKANE INTL (GEG)

APP CRS <b>031°</b>	Rwy Idg <b>11002</b>
TDZE <b>2385</b>	Apt Elev <b>2385</b>

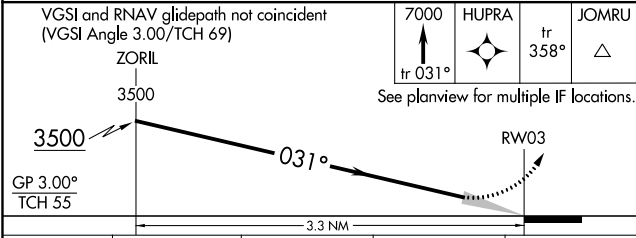
RNP AR APCH.	ALSF-2 	MISSED APPROACH: Climb to 7000 on track 031° to HUPRA and on track 358° to JOMRU and hold.
▼ For uncompensated Baro-VNAV systems, procedure NA below -18°C or above 53°C.		

ATIS <b>124.325 254.375</b>	SPOKANE APP CON <b>123.75 282.25</b> (205°-025°) <b>133.35 263.0</b> (026°-204°)	SPOKANE TOWER <b>118.3 278.3</b>	GND CON <b>121.9 348.6</b>	CLNC DEL <b>127.55</b>
--------------------------------	--	-------------------------------------	-------------------------------	---------------------------



NW-1, 25 FEB 2021 to 25 MAR 2021

NW-1, 25 FEB 2021 to 25 MAR 2021



CATEGORY	A	B	C	D
RNP 0.11 DA		2716/26	331 (400-½)	
RNP 0.30 DA		2842/45	457 (500-¾)	

ELEV 2385	<b>D</b>	TDZE 2385
-----------	----------	-----------

031° to RWY 03

TDZ/CL Rwy 3 and 21  
REIL Rwy 8 and 26  
HIRL Rwy 3-21  
MIRL Rwy 8-26

## AUTHORIZATION REQUIRED