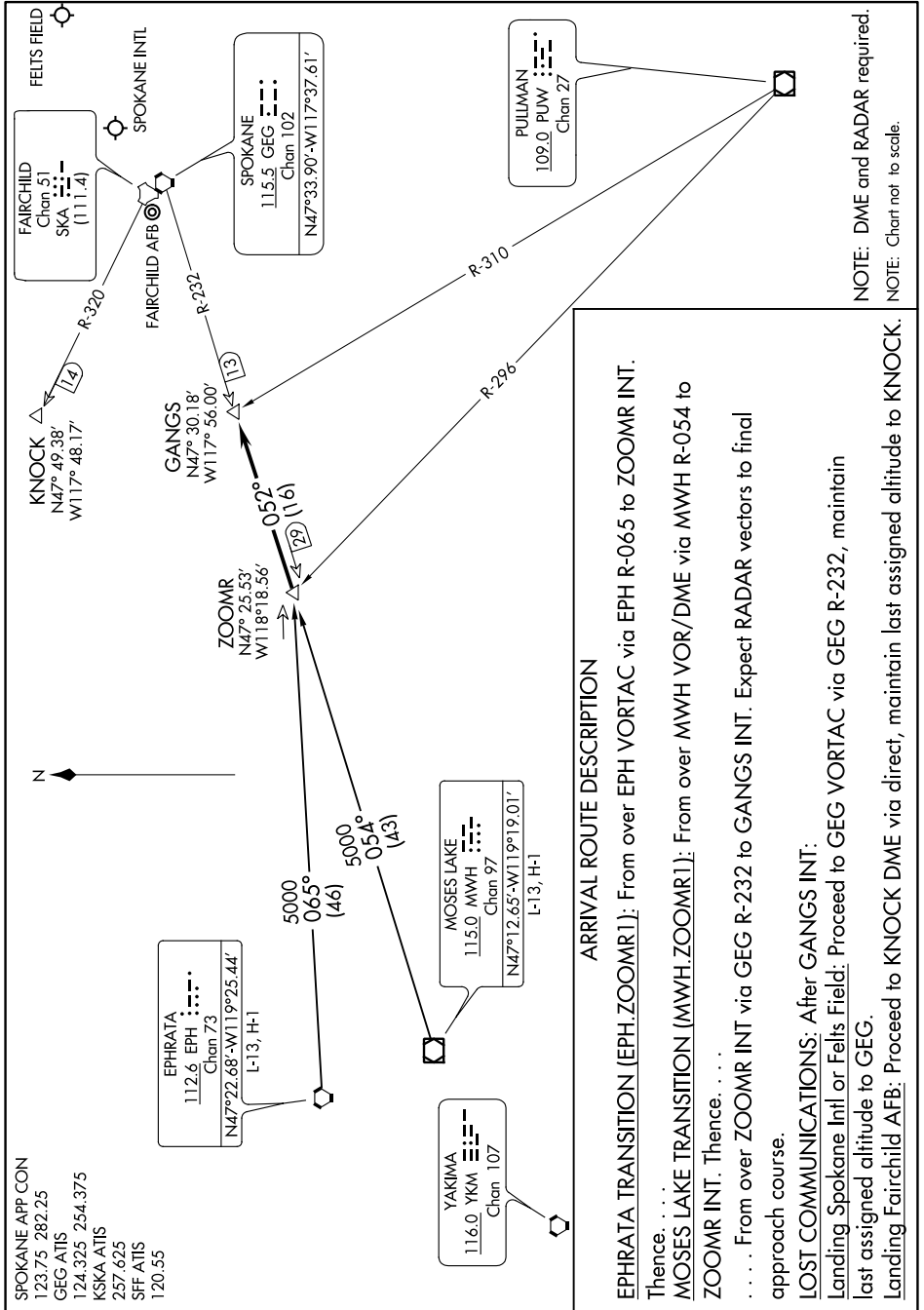


ZOOMR ONE ARRIVAL (ZOOMR.ZOOMR1)

SPOKANE, WASHINGTON

NW-1, 25 FEB 2021 to 25 MAR 2021



NOTE: DME and RADAR required.
 NOTE: Chart not to scale.

ARRIVAL ROUTE DESCRIPTION

EPHRATA TRANSITION [EPH.ZOOMR1]: From over EPH VORTAC via EPH R-065 to ZOOMR INT. Thence, . . .

MOSES LAKE TRANSITION [MWH.ZOOMR1]: From over MWH VOR/DME via MWH R-054 to ZOOMR INT. Thence, . . .

. . . From over ZOOMR INT via GEG R-232 to GANGS INT. Expect RADAR vectors to final approach course.

LAST COMMUNICATIONS: After GANGS INT:
 Landing Spokane Intl or Felts Field: Proceed to GEG VORTAC via GEG R-232, maintain last assigned altitude to GEG.
 Landing Fairchild AFB: Proceed to KNOCK DME via direct, maintain last assigned altitude to KNOCK.

NW-1, 25 FEB 2021 to 25 MAR 2021

ZOOMR ONE ARRIVAL (ZOOMR.ZOOMR1)

SPOKANE, WASHINGTON