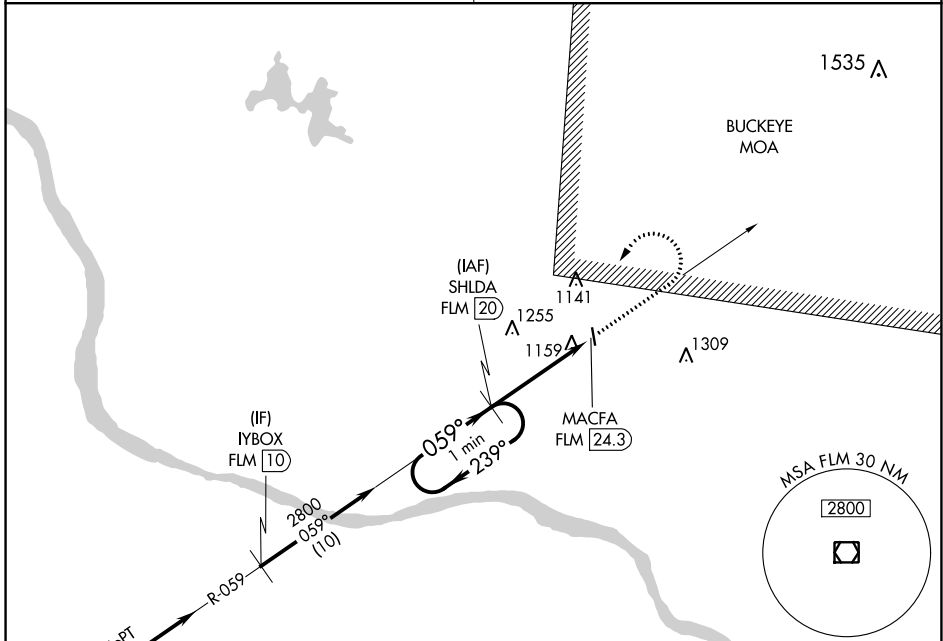


VOR/DME FLM <b>117.0</b> Chan <b>117</b>	APP CRS <b>059°</b>	Rwy Idg TDZE Apt Elev	<b>N/A</b> <b>N/A</b> <b>958</b>
--	------------------------	-----------------------------	--

**VOR/DME-A**  
BROWN COUNTY (GEO)

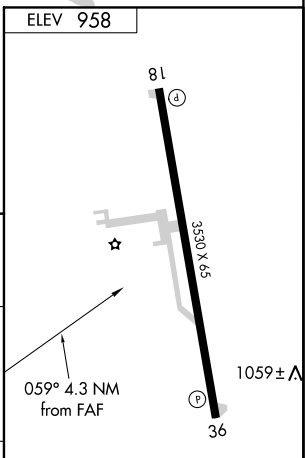
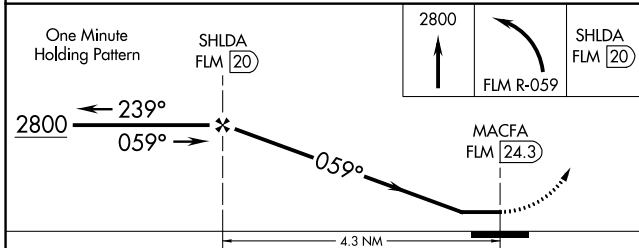
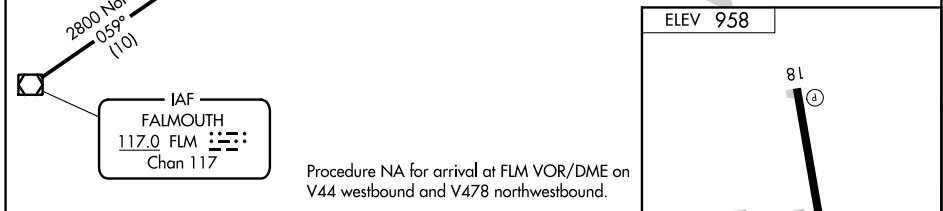
**▲** Use Cincinnati/Northern Kentucky Intl, KY altimeter setting. Procedure NA at night. Helicopter visibility reduction below 1 SM NA.  
**▲** NA MISSED APPROACH: Climb to 2800 then left turn via FLM VOR/DME R-059 to SHLDA 20 DME and hold.

INDIANAPOLIS CENTER **135,575 290.5** CTAF **122.9**



EC-2, 25 FEB 2021 to 25 MAR 2021

EC-2, 25 FEB 2021 to 25 MAR 2021



CATEGORY	A	B	C	D
CIRCLING	1700-1 742 (800-1)	1700-1¼ 742 (800-1¼)	1700-2¼ 742 (800-2¼)	NA

REIL Rwys 18 and 36 **Ⓛ**  
MIRL Rwy 18-36 **Ⓛ**