

WAAS CH 87004	APP CRS 194°	Rwy Idg TDZE 1065	6115
W19A		Apt Elev 1071	

RNAV (GPS) RWY 19

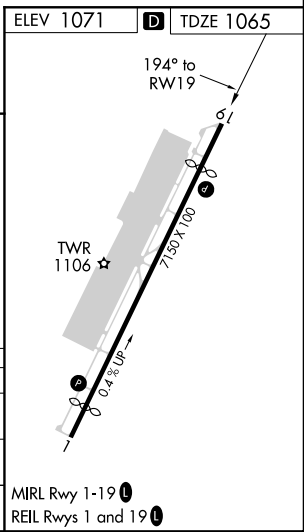
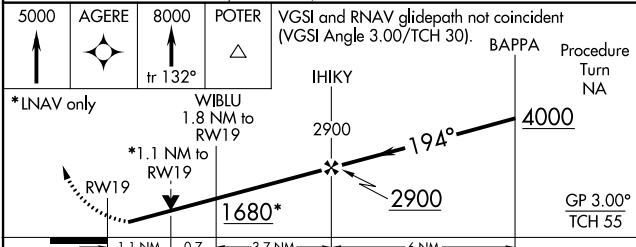
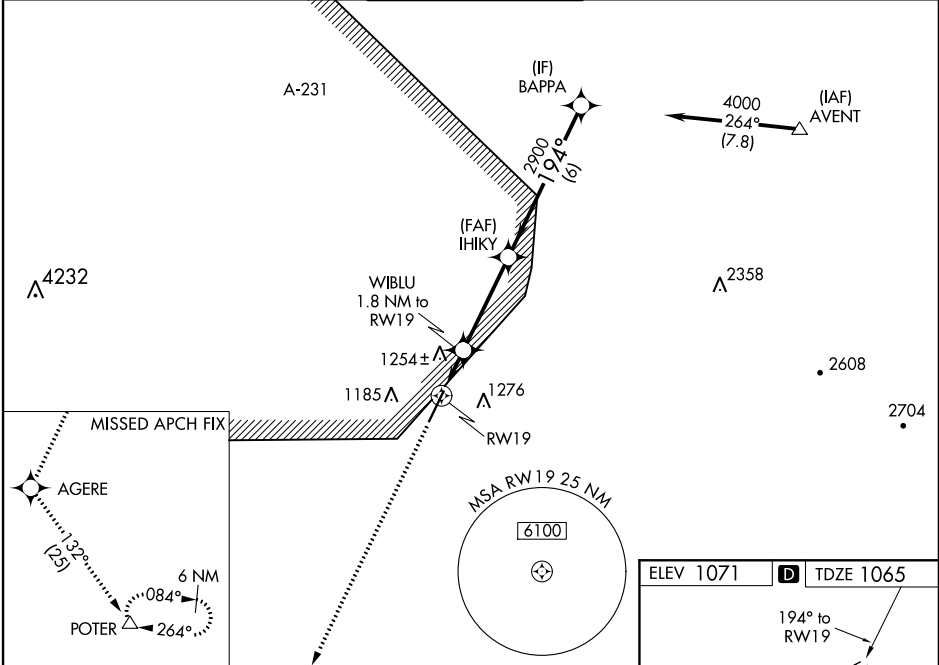
GLENDALE MUNI (GEU)

RNP APCH.

⚠ For uncompensated Baro-VNAV systems, LNAV/VNAV NA below -17°C or above 47°C. Rwy 19 helicopter visibility reduction below 3/4 SM NA. VDP and Baro-VNAV NA when using Phoenix Sky Harbor Inl altimeter setting. When local altimeter setting not received, use Phoenix Sky Harbor Inl altimeter setting: increase LPV DA to 1384 feet; increase LNAV/VNAV DA to 1617 feet and all Cats visibility 1/4 SM; increase all MDA 60 feet and LNAV Cat C and D visibility 1/4 SM.

MISSED APPROACH: Climb to 5000 direct AGERE then climb to 8000 on track 132° to POTER and hold.

ATIS 119.425	LUKE APP CON* 118.15 363.125	GLENDALE TOWER* 121.0 (CTAF)	GND CON 118.0	UNICOM 122.95
------------------------	--	--	-------------------------	-------------------------



5000		AGERE	8000	POTER	VGSi and RNAV glidepath not coincident (VGSi Angle 3.00/TCH 30).				
↑		⬠	↑ fr 132°	△	IHIKY	BAPPA	Procedure Turn NA		
*LNAV only		WBLU 1.8 NM to RW19			2900	4000			
RW19		*1.1 NM to RW19			1680*	2900	GP 3.00° TCH 55		
1.1 NM		0.7		3.7 NM		6 NM			
CATEGORY	A		B		C		D		
LPV DA	1339-1				274 (300-1)				
LNAV/VNAV DA	1572-1 3/4				507 (600-1 3/4)				
LNAV MDA	1540-1		475 (500-1)		1540-1 3/8		1540-1 1/2		MRL Rwy 1-19 REL Rws 1 and 19
					475 (500-1 3/8)		475 (500-1 1/2)		

SW-4, 25 FEB 2021 to 25 MAR 2021

SW-4, 25 FEB 2021 to 25 MAR 2021