

LOC/DME I-JUH <b>109.35</b> Chan <b>30(Y)</b>	APP CRS <b>276°</b>	Rwy Idg TDZE Apt Elev	<b>5002</b> <b>3142</b> <b>3178</b>
---	------------------------	-----------------------------	---

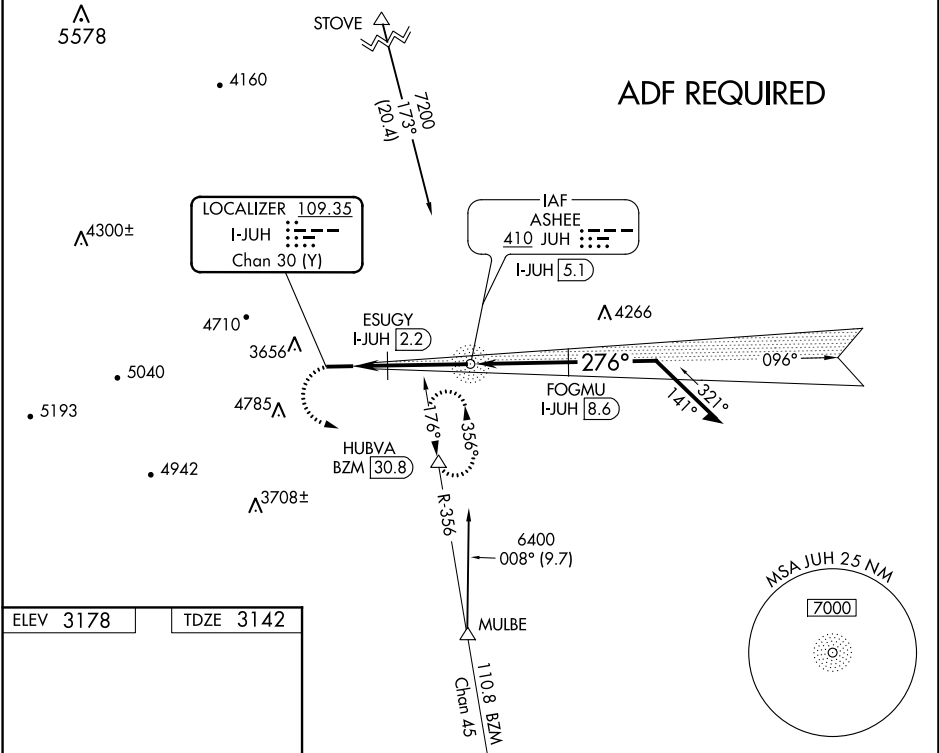
# LOC RWY 28

ASHE COUNTY (GEV)

**NA** Circling Rwy 10 NA at night. DME required. Rwy 28 helicopter visibility reduction below 3/4 SM NA. VDP NA when using Marion/Wytheville altimeter setting. When local altimeter setting not received, use Marion/Wytheville altimeter setting and increase all MDA 160 feet and S-28 Cats C/D visibility 1/2 mile.

**MISSED APPROACH:** Climbing left turn to 7200 on heading 096° and BZM VOR/DME R-356 to HUBVA/BZM 30.8 DME and hold, continue climb-in-hold to 7200.

AWOS-3 <b>120.675</b>	ATLANTA CENTER <b>125.15 263.0</b>	UNICOM <b>122.8 (CTAF)</b>
--------------------------	---------------------------------------	-------------------------------



ELEV 3178	TDZE 3142
REIL Rwy 28	MIRL Rwy 10-28

7200	BZM R-356	HUBVA	JUH NDB I-JUH 5.1	Remain within 10 NM
hdg 096°			6100	
			FOGMU I-JUH 8.6	096°
			ESUGY I-JUH 2.2	276°
			I-JUH 3.1	5700
			4700	276°
			3.45° TCH 48	VGSI and descent angles not coincident (VGSI Angle 3.00/TCH 48).
			1.3 1 NM 2 NM 3.5 NM	
CATEGORY	A	B	C	D
S-28	3860-1 1/2	718 (700-1 1/2)	3860-2	718 (700-2)
CIRCLING	4240-1 1/2	1062 (1100-1 1/2)	NA	

SE-2, 25 FEB 2021 to 25 MAR 2021

SE-2, 25 FEB 2021 to 25 MAR 2021