

WAAS CH 70437 W28A	APP CRS 276°	Rwy Idg TDZE Apt Elev	5002 3142 3178
--	------------------------	-----------------------------	---

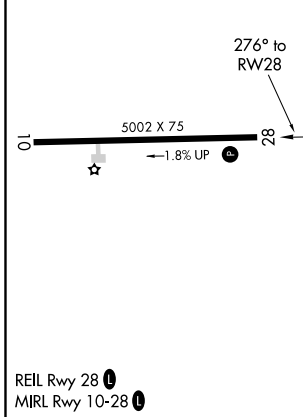
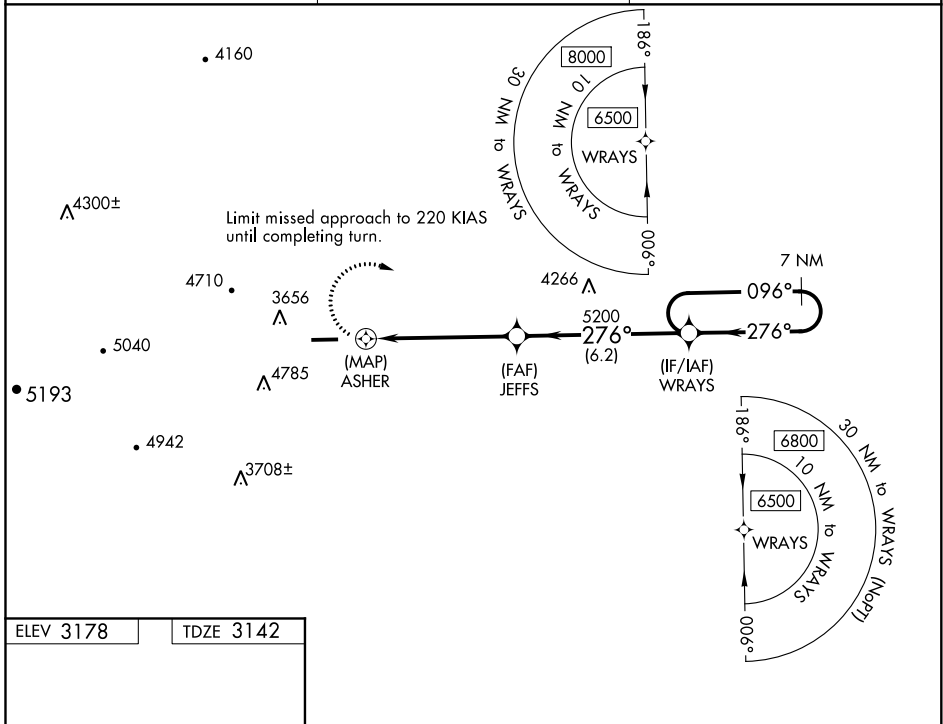
RNAV (GPS) RWY 28

ASHE COUNTY (GEV)

⚠ Circling Rwy 10 NA at night. Circling NA for Cat D north of Rwy 10-28. DME/DME RNP-0.3 NA. Rwy 28 helicopter visibility reduction below 3/4 SM NA. VDP NA when using Marion/Wytheville altimeter setting. When local altimeter setting not received, use Marion/Wytheville altimeter setting and increase all MDA 160 feet and LP and LNAV Cat B visibility 1/4 mile and LP and LNAV Cats C/D visibility 1/2 mile. Cats C/D Circling NA when using Marion/Wytheville altimeter setting.

⚠ MISSED APPROACH: Climbing right turn to 6500 direct WRAYS and hold.

AWOS-3 120.675	ATLANTA CENTER 125.15 263.0	UNICOM 122.8 (CTAF)
--------------------------	---------------------------------------	-------------------------------



6500 WRAYS		WRAYS 7 NM Holding Pattern			
ASHER		JEFFS			
1.5 NM to ASHER		5200			
1.1		1.5		3.9 NM	
				6.2 NM	
CATEGORY	A	B	C	D	
LP MDA	3960-1¼	818 (800-1¼)	3960-2½	818 (800-2½)	
LNAV MDA	4060-1¼	918 (900-1¼)	4060-2½	918 (900-2½)	
C CIRCLING	4240-1¼	4240-1½	5140-3	1962 (2000-3)	
	1062 (1100-1¼)	1062 (1100-1½)			

SE-2, 25 FEB 2021 to 25 MAR 2021

SE-2, 25 FEB 2021 to 25 MAR 2021