

WAAS CH <b>61100</b> <b>W13A</b>	APP CRS <b>131°</b>	Rwy Idg TDZE Apt Elev	<b>9200</b> <b>358</b> <b>366</b>
----------------------------------------	------------------------	-----------------------------	-----------------------------------------

# RNAV (GPS) RWY 13

EAST TEXAS RGNL (GGG)

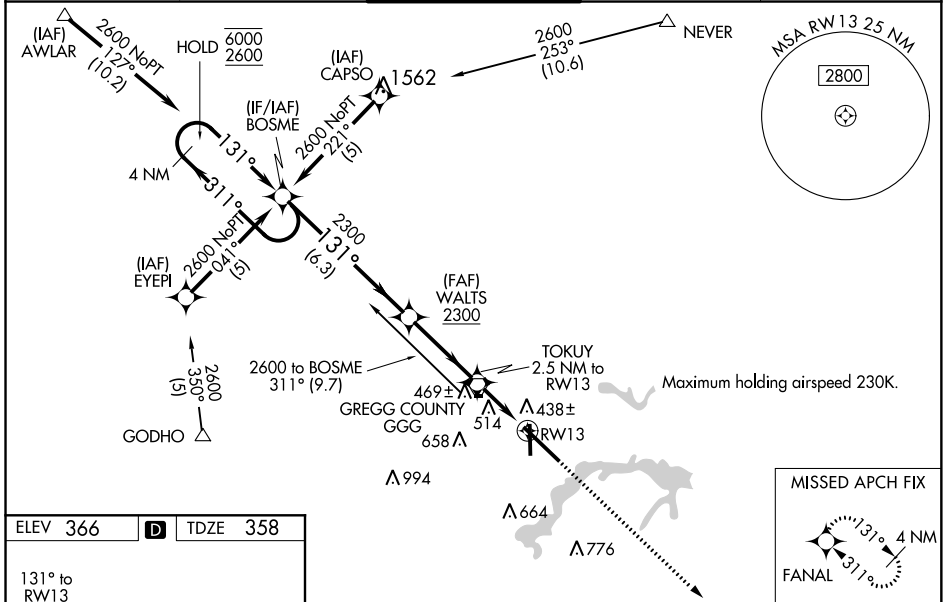
RNP APCH.

**▼** Baro-VNAV NA when using Gilmer altimeter setting. VDP NA when using Gilmer altimeter setting. For inop ALS, increase LPV Cat E visibility to RVR 4000, LNAV/VNAV all Cats visibility to RVR 5500, LNAV Cat A/B visibility to RVR 5500, and LNAV Cat D/E visibility to 1¼ SM. When local altimeter setting not received use Gilmer altimeter setting and increase LPV DA to 671 feet; increase LNAV/VNAV DA to 785 feet; increase all MDA 60 feet, and LNAV Cat C visibility to RVR 5000, and Circling Cat E ¼ SM. For inop ALS when using Gilmer altimeter setting, increase LPV all Cats visibility to RVR 4500, LNAV/VNAV Cat E visibility to 1¼ SM, and LNAV Cats A/B visibility to 5500, and LNAV Cats C/D/E visibility to 1¾ SM. For uncompensated Baro-VNAV systems, LNAV/VNAV NA below -15°C or above 54°C.

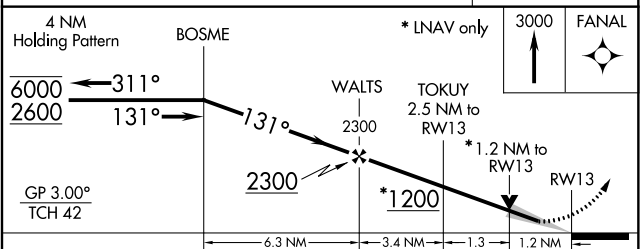
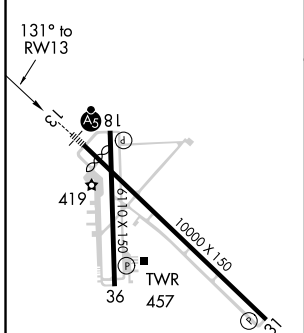


**MISSED APPROACH:**  
Climb to 3000 direct FANAL and hold.

ATIS <b>119.65</b>	LONGVIEW APP CON* <b>128.75 379.15</b>	EASTEX TOWER* <b>119.2 (CTAF) 377.05</b>	GND CON <b>121.6</b>	UNICOM <b>122.95</b>
-----------------------	-------------------------------------------	---------------------------------------------	-------------------------	-------------------------



ELEV 366	<b>D</b>	TDZE 358
----------	----------	----------



CATEGORY	A	B	C	D	E
LPV DA	612/24 254 (300-½)				
LNAV/VNAV DA	726/40 368 (400-¾)				
LNAV MDA	780/24	422 (500-½)	780/40 422 (500-¾)	780/50	422 (500-1)
CIRCLING	860-1	494 (500-1)	860-1½ 494 (500-1½)	920-2 554 (600-2)	1080-2½ 714 (800-2½)

SC-2, 25 FEB 2021 to 25 MAR 2021

SC-2, 25 FEB 2021 to 25 MAR 2021