

WAAS CH <b>99426</b> <b>W18A</b>	APP CRS <b>176°</b>	Rwy Idg TDZE Apt Elev	<b>6109</b> <b>356</b> <b>365</b>
--	------------------------	-----------------------------	---

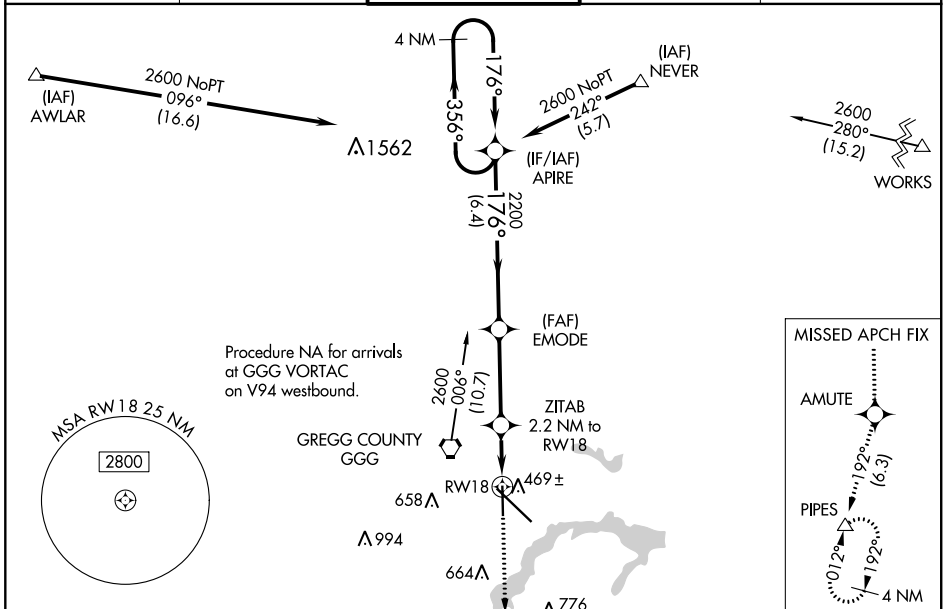
# RNAV (GPS) RWY 18

EAST TEXAS RGNL (GGG)

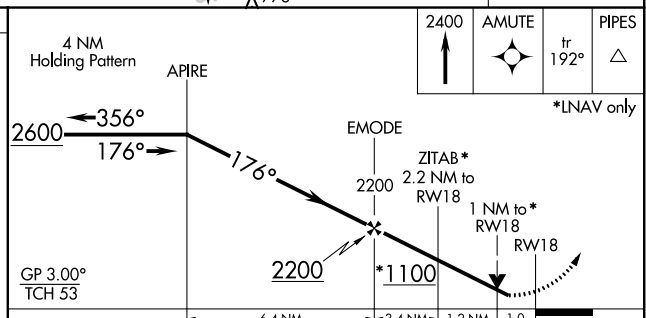
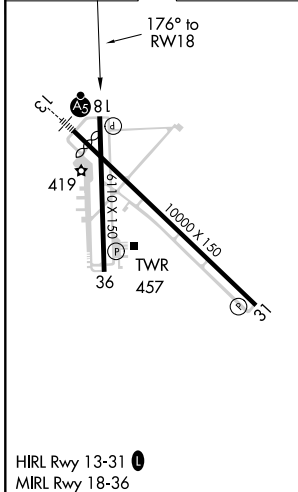
**⚠** Baro-VNAV NA when using Gilmer altimeter setting. For uncompensated Baro-VNAV systems, LNAV/VNAV NA below -15°C (5°F) or above 41°C (105°F). DME/DME RNP-0.3 NA. Visibility reduction by helicopters NA. When local altimeter setting not received, use Gilmer altimeter setting and increase all DA 59 feet and all MDA 60 feet, increase LPV visibility all Cats ¼ mile and LNAV/VNAV visibility all Cats ½ mile and LNAV visibility Cat C and D ¾ mile.

**MISSED APPROACH:** Climb to 2400 direct AMUTE and on track 192° to PIPES and hold.

ATIS <b>119.65</b>	LONGVIEW APP CON* <b>128.75 379.15</b>	<b>EASTEX TOWER*</b> <b>119.2 (CTAF) 377.05</b>	GND CON <b>121.6</b>	UNICOM <b>122.95</b>
-----------------------	---	--	-------------------------	-------------------------



ELEV 365	<b>D</b>	TDZE 356
----------	----------	----------



CATEGORY	A	B	C	D
LPV DA		630-7/8	274 (300-7/8)	
LNAV/VNAV DA		652-1	296 (300-1)	
LNAV MDA		720-1	364 (400-1)	
CIRCLING	860-1	495 (500-1)	860-1½ 495 (500-1½)	920-2 555 (600-2)

SC-2, 25 FEB 2021 to 25 MAR 2021

SC-2, 25 FEB 2021 to 25 MAR 2021