

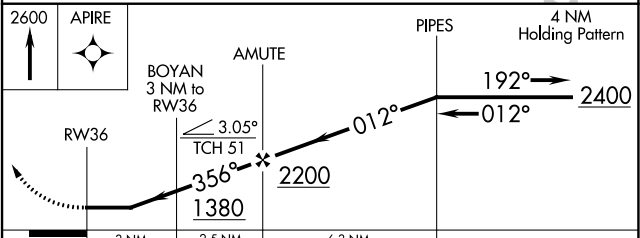
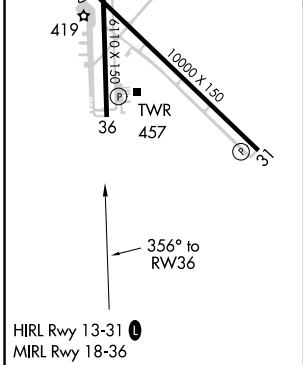
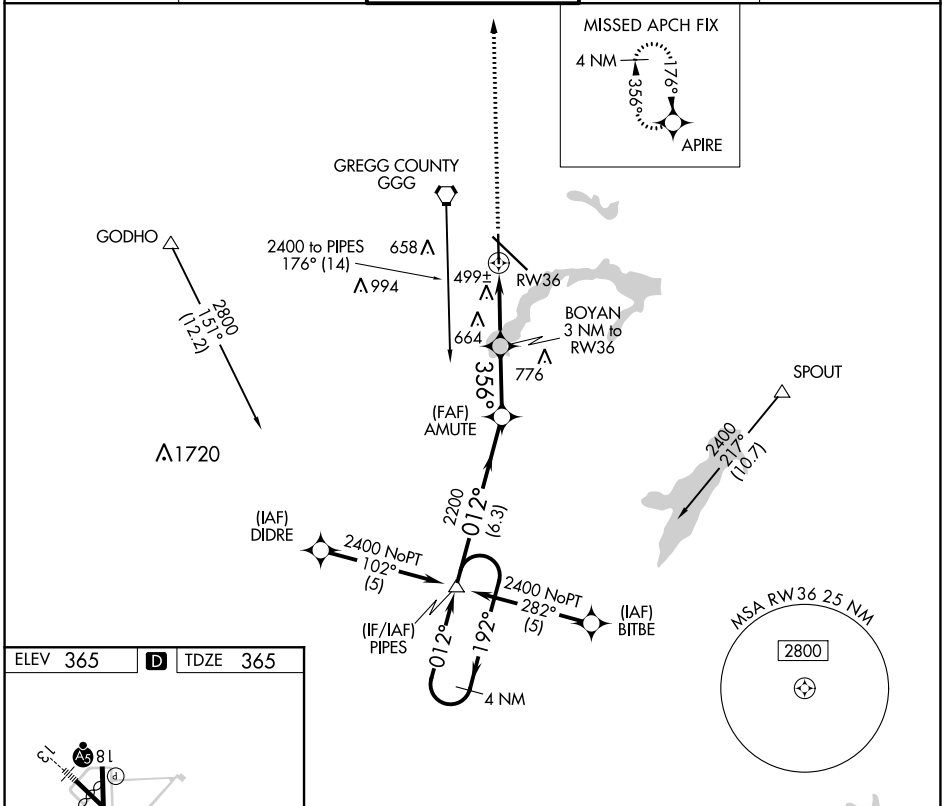
APP CRS 356°	Rwy Idg 6109
	TDZE 365
	Apt Elev 365

RNAV (GPS) RWY 36

EAST TEXAS RGNL (GGG)

<p>▽ DME/DME RNP-0.3 NA. Visibility reduction by helicopters NA. ▲ When local altimeter setting not received, use Gilmer altimeter setting and increase all MDA 60 feet and LNAV Cat C and D visibility ¼ mile.</p>	<p>MISSED APPROACH: Climb to 2600 direct APIRE and hold.</p>
--	--

<p>ATIS 119.65</p>	<p>LONGVIEW APP CON* 128.75 379.15</p>	<p>EASTEX TOWER* 119.2 (CTAF) 377.05</p>	<p>GND CON 121.6</p>	<p>UNICOM 122.95</p>
-------------------------------	---	---	---------------------------------	---------------------------------



CATEGORY	A	B	C	D
LNAV MDA	760-1 395 (400-1)			760-1¼ 395 (400-1¼)
CIRCLING	860-1	495 (500-1)	860-1½ 495 (500-1½)	920-2 555 (600-2)

SC-2, 25 FEB 2021 to 25 MAR 2021

SC-2, 25 FEB 2021 to 25 MAR 2021