

VORTAC GGG <b>112.9</b> Chan <b>76</b>	APP CRS <b>306°</b>	Rwy Idg TDZE Apt Elev	<b>9200</b> <b>354</b> <b>365</b>
--	------------------------	-----------------------------	---

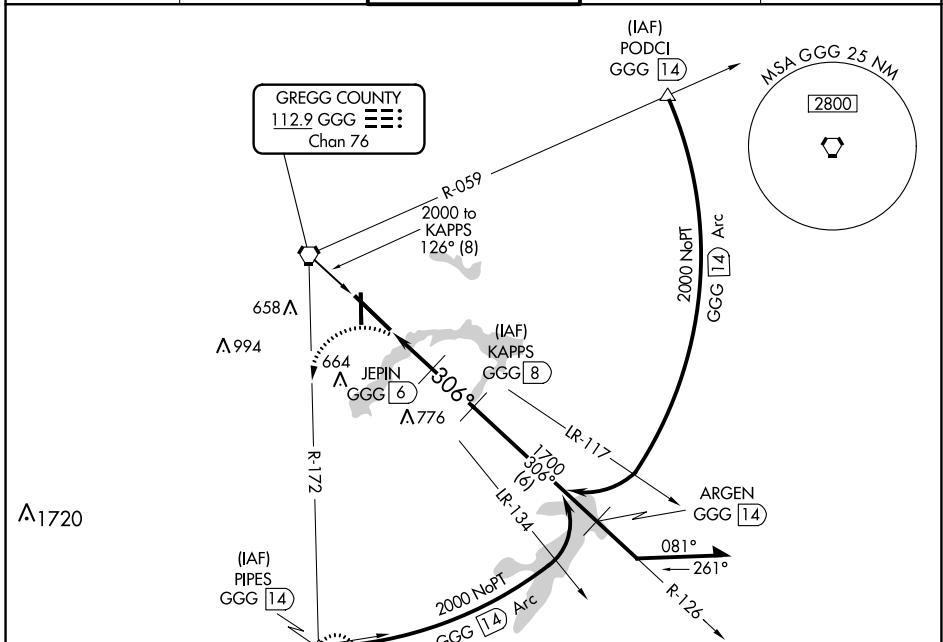
# VOR/DME or TACAN RWY 31

EAST TEXAS RGNL (GGG)

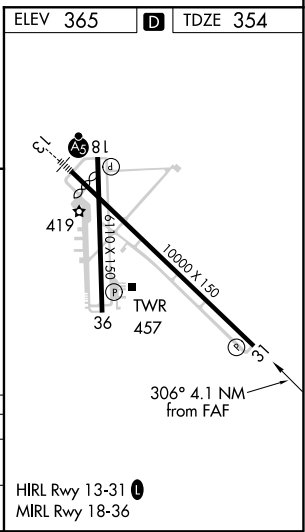
**⚠** When local altimeter setting not received, use Gilmer altimeter setting and increase all MDA 60 feet and increase S-31 Cats C/D/E and Circling Cat E visibility ¼ mile. VDP NA when using Gilmer altimeter setting.

**⚠** MISSED APPROACH: Climb to 800, then climbing left turn to 2500 via GGG R-172 to PIPES Int and hold.

ATIS <b>119.65</b>	LONGVIEW APP CON* <b>128.75 379.15</b>	EASTEX TOWER* <b>119.2 (CTAF) 377.05</b>	GND CON <b>121.6</b>	UNICOM <b>122.95</b>
-----------------------	---	---	-------------------------	-------------------------



800	2500	PIPES △	KAPPS GGG [8]	Remain within 15 NM
GGG R-172		△	≤ 2.97° TCH 52	
*1120 when using Gilmer altimeter setting.		JEPIN GGG [6]	ARGEN GGG [14]	2000
GGG [3.9]		GGG [5]	GGG [14]	2000
1060*		1700	306°	306°
-1.1		1 NM	2 NM	6 NM
CATEGORY	A	B	C	D
S-31	740-1	386 (400-1)		740-1¼ 386 (400-1¼)
CIRCLING	860-1	495 (500-1)	860-1½ 495 (500-1½)	920-2 555 (600-2) 1080-2½ 715 (800-2½)



SC-2, 25 FEB 2021 to 25 MAR 2021

SC-2, 25 FEB 2021 to 25 MAR 2021