

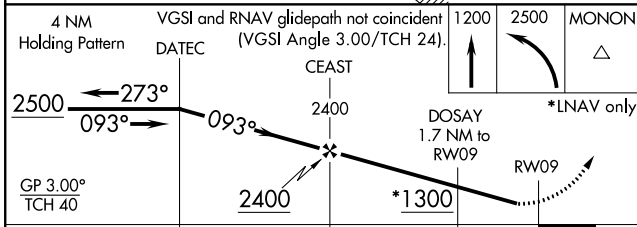
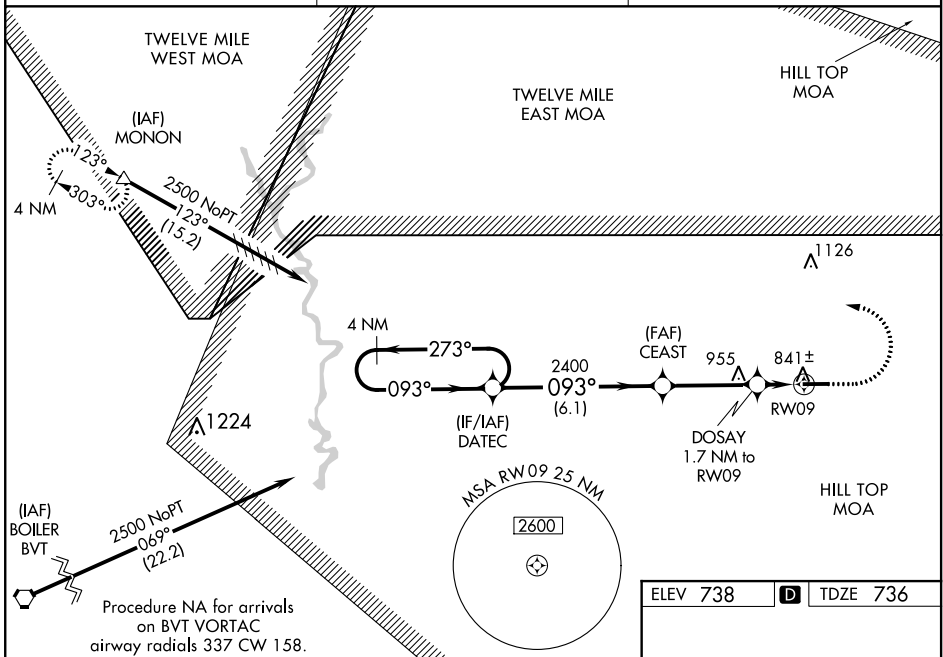
WAAS CH 45820 W09A	APP CRS 093°	Rwy Idg TDZE Apt Elev	5001 736 738
--	------------------------	-----------------------------	---

RNAV (GPS) RWY 9
LOGANSPORT/CASS COUNTY (GGP)

⚠ NA Baro-VNAV NA when using Grissom ARB altimeter setting. For uncompensated Baro-VNAV systems, LNAV/VNAV NA below -16°C (4°F) or above 39°C (102°F). Obtain local altimeter setting on CTAF; when not received, use Grissom ARB altimeter setting and increase all DA 36 feet, all MDA 40 feet, LNAV/VNAV all Cats and LNAV Cat C and D visibility 1/8 mile. When VGSI inoperative, Straight-in/Circling Rwy 9 procedure NA at night. DME/DME RNP-0.3 NA. Helicopter visibility reduction below 1 SM NA.

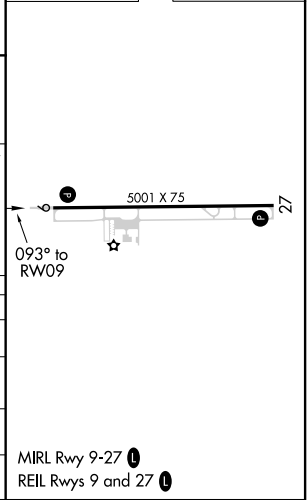
MISSED APPROACH:
Climb to 1200, then climbing left turn to 2500 direct MONON and hold.

AWOS-3P 118.5	GRISSOM APP CON★ 121.05 338.275	UNICOM 122.8 (CTAF) 0
-------------------------	---	---------------------------------



ELEV 738	D	TDZE 736
----------	----------	----------

CATEGORY	A	B	C	D
LPV DA		991-1	255 (300-1)	
LNAV/VNAV DA		1022-1	286 (300-1)	
LNAV MDA		1100-1	364 (400-1)	
CIRCLING	1160-1 422 (500-1)	1200-1 462 (500-1)	1200-1½ 462 (500-1½)	1300-2 562 (600-2)



EC-2, 25 FEB 2021 to 25 MAR 2021

EC-2, 25 FEB 2021 to 25 MAR 2021