

VOR/DME GGW 113.9 Chan 86	APP CRS 133°	Rwy Idg 5001 TDZE 2294 Apt Elev 2296
---	------------------------	---

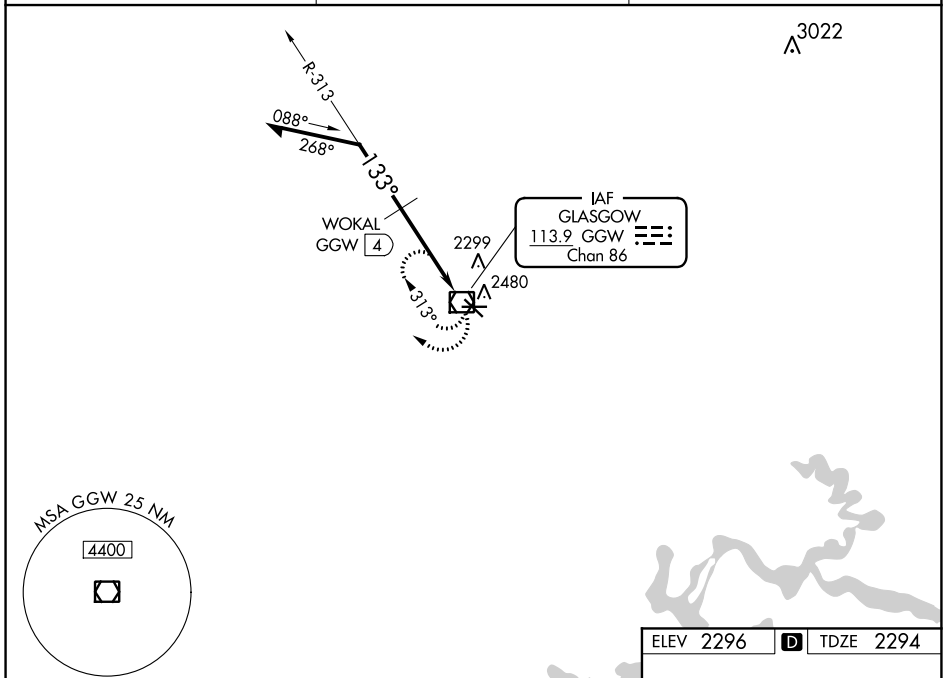
VOR RWY 12

WOKAL FIELD/GLASGOW-VALLEY COUNTY (GGW)

⚠ When local altimeter setting not received, use Wolf Point altimeter setting and increase all MDA 160 feet and increase S-12 and Circling visibility Cats A/B/D ¼ SM, Cat C ½ SM and WOKAL fix mins increase all MDAs 160 feet and increase visibility Cats C/D ¼ SM and Circling Cats C/D ¼ SM.

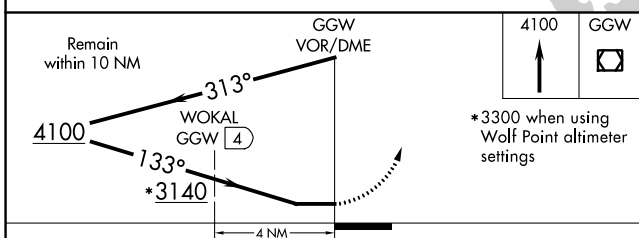
MISSED APPROACH:
Climb to 4100 in GGW
VOR/DME holding pattern.

ASOS 135.175	SALT LAKE CENTER 126.85 305.2	UNICOM 122.8 (CTAF)
------------------------	---	-------------------------------

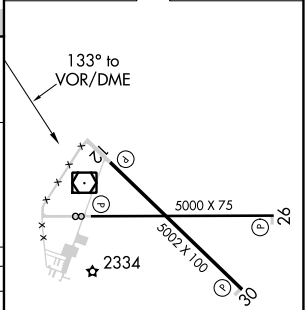


NW-1, 25 FEB 2021 to 25 MAR 2021

NW-1, 25 FEB 2021 to 25 MAR 2021



ELEV 2296	D	TDZE 2294
-----------	---	-----------



CATEGORY	A	B	C	D
S-12	3140-1 846 (900-1)	3140-1¼ 846 (900-1¼)	3140-2½ 846 (900-2½)	3140-2¾ 846 (900-2¾)
CIRCLING	3140-1 844 (900-1)	3140-1¼ 844 (900-1¼)	3140-2½ 844 (900-2½)	3140-2¾ 844 (900-2¾)
WOKAL FIX MINIMUMS				
S-12	2700-1 406 (500-1)		2700-1¼ 406 (500-1¼)	
CIRCLING	2780-1 484 (500-1)		2780-1½ 484 (500-1½)	2860-2 564 (600-2)

REIL Rwy 8, 12, 26 and 30
MIRL Rwy 8-26 and 12-30