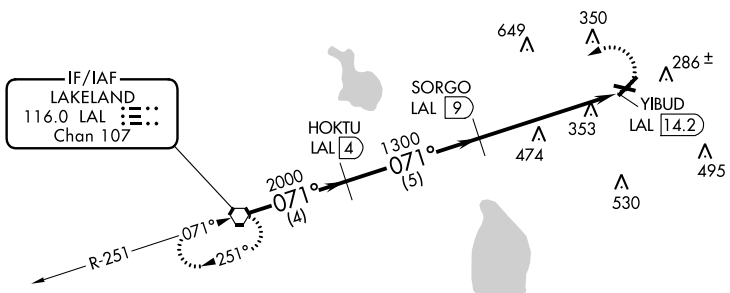


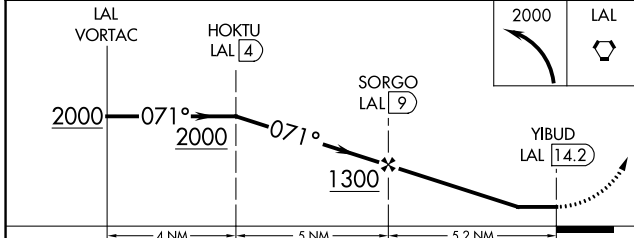
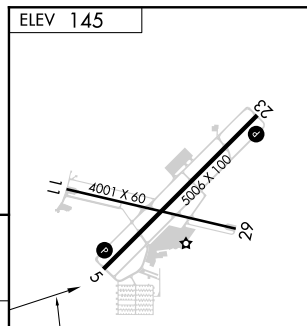
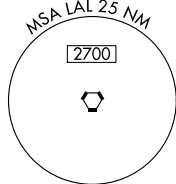
VORTAC LAL 116.0 Chan 107	APP CRS 071°	Rwy Idg TDZE Apt Elev	N/A N/A 145
---	------------------------	-----------------------------	--

VOR-A
WINTER HAVEN RGNL (GIF')

DME required.		MISSED APPROACH: Climbing left turn to 2000 direct LAL VORTAC and hold.	
<p>▼ When local altimeter setting not received, use Bartow altimeter setting and increase all MDA 20 feet.</p> <p>▲</p>		ASOS 133.675	TAMPA APP CON 120.65 290.3
		CLNC DEL (GCO) 121.725	UNICOM 123.05 (CTAF) 0



Procedure NA for arrivals on LAL VORTAC airway radials 046 CW 139.



CATEGORY	A	B	C	D
CIRCLING	780-1	635 (700-1)	780-1¼ 635 (700-1¼)	820-2¼ 675 (700-2¼)

REIL Rwy 5 and 23
REIL Rwy 11 and 29
MRL Rwy 5-23 and 11-29

SE-3, 25 FEB 2021 to 25 MAR 2021

SE-3, 25 FEB 2021 to 25 MAR 2021