

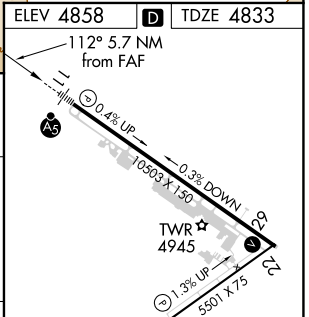
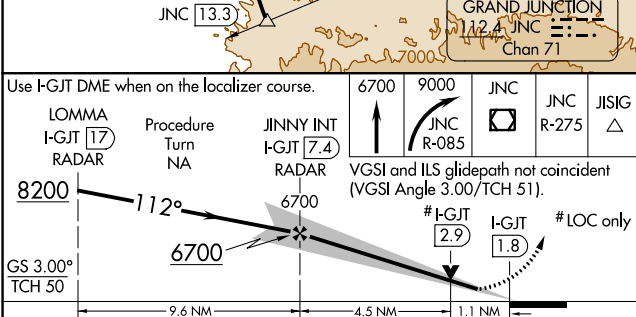
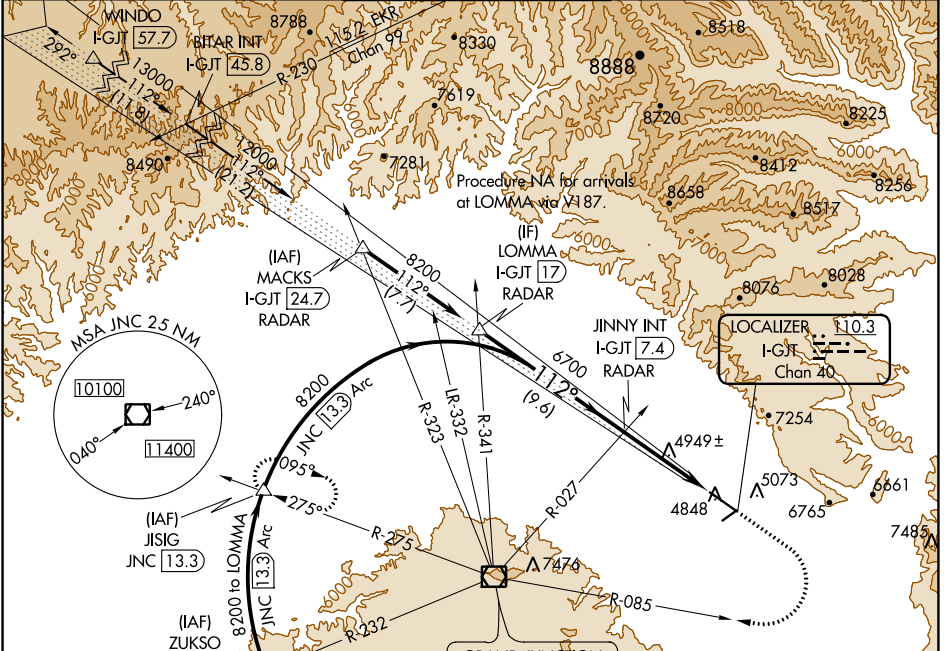
LOC/DME I-GJT 110.3 Chan 40	APP CRS 112°	Rwy Idg 10503 TDZE 4833 Apt Elev 4858
--	------------------------	--

ILS or LOC RWY 11

GRAND JUNCTION RGNL (GJT)

DME required.		MALSR	MISSED APPROACH: Climb to 6700 then climbing right turn to 9000 via JNC VOR/DME R-085 to JNC VOR/DME then via JNC VOR/DME R-275 to JISIG/JNC 13.3 DME and hold.	
<p>For inop ALS, increase S-LOC 11 Cats C and D visibility to RVR 5500. *RVR 1800 authorized with the use of FD or AP or HUD to DA.</p>				

ATIS 118.55	DENVER APP CON * 119.7 317.4	GRAND JUNCTION TOWER * 118.1 (CTAF) 0 257.8	GND CON 121.7 257.8	UNICOM 122.95
-----------------------	--	---	-------------------------------	-------------------------



Use I-GJT DME when on the localizer course.	6700	9000	JNC	JNC	JISIG
LOMMA I-GJT 17 RADAR	Procedure Turn NA	JINNY INT I-GJT 7.4 RADAR	JNC R-085	JNC R-275	JISIG
8200	6700				
GS 3.00°	712°	6700	# I-GJT 2.9	I-GJT 1.8	# LOC only
TCH 50	9.6 NM	4.5 NM	1.1 NM		
CATEGORY	A	B	C	D	
S-ILS 11		*5033/24	200 (200-½)		
S-LOC 11	5200/24	367 (400-½)	5200/35 367 (400-¾)	5200/40 367 (400-¾)	
CIRCLING	5360-1 502 (600-1)	5420-1 562 (600-1)	5440-1½ 582 (600-1½)	5540-2¼ 682 (700-2¼)	

HIRL Rwy 11-29	MIRL Rwy 4-22	REIL Rwy 4, 22 and 29			
FAF to MAP 5.7 NM					
Knots	60	90	120	150	180
Min:Sec	5:42	3:48	2:51	2:17	1:54

SW-1, 25 FEB 2021 to 25 MAR 2021

SW-1, 25 FEB 2021 to 25 MAR 2021